



Public Data-based Report



Validation Report Service

Cryo-EM Map Validation Report

Report to assess Cryo-EM Volume Map at Level(s) 0

This report has been generated based on data publicly available at [EMDB](#).

Basic Entry Information:

EMDB ID: [EMD-2401](#)

Title: Electron cryo-microscopy of emptied cricket parvovirus AdDNV

Authors: [See EMDB entry link](#)

Deposited on: 2013-06-24T00:00:00

Reported Resolution: (not reported)

Contact Us:

Instruct Image Processing Center ([I²PC](#))

Biocomputing Unit ([BCU](#))

i2pc@cnb.csic.es

[VRS Website](#)

National Center for Biotechnology (CNB)
St/ Darwin, 3 (Autonomous University of Madrid)
28049 Cantoblanco, Madrid (Spain)

Last update: **October 21, 2024, 2:37pm**

Context

Cryo-electron microscopy is currently one of the most active techniques in Structural Biology. The number of maps deposited at the [Electron Microscopy Data Bank](#) is rapidly growing every year and keeping the quality of the submitted maps is essential to maintain the scientific quality of the field. The ultimate quality measure is the consistency of the map and an atomic model. However, this is only possible for high resolution maps. Over the years there have been many suggestions about validation measures of 3DEM maps. Unfortunately, most of these measures are not currently in use for their spread in multiple software tools and the associated difficulty to access them. To alleviate this problem, we made available a validation grading system that evaluate the information provided to assess the map.

This system grades a map from 0 to 5 depending on the amount of information available. In this way, a map could be validated at Level 0 (the deposited map), 1 (two half maps), 2 (2D classes), 3 (particles), 4 (... + angular assignment), 5 (... + micrographs and coordinates). In addition, we can have three optional qualifiers: A (... + atomic model), W (... + image processing workflow), and O (... + other techniques).

This Validation Report Service is explained in more detail in this [paper](#). For more information about the different methods and softwares used for this report, see the references [here](#).

Summarized overall quality

The map seems to be well centered. There seems to be a problem with the suggested threshold (see Sec. 2.2). There seems to be a problem with the map's background (see Sec. 2.3).

The overall score (passing tests) of this report is 1 out of 3 evaluable items.

Some programs may not work properly since resolution parameter has not been reported.

0.a Mass analysis	Sec. 2.1	OK
0.b Mask analysis	Sec. 2.2	1 warnings
0.c Background analysis	Sec. 2.3	2 warnings
0.d B-factor analysis	Sec. 2.4	Does not apply
0.e DeepRes	Sec. 2.5	Does not apply
0.e Local B-factor	Sec. 2.6	Does not apply
0.g Local Occupancy	Sec. 2.7	Does not apply
0.h Deep hand	Sec. 2.8	Does not apply

Summary of the warnings across sections.

Section 2.2 (0.b Mask analysis)

1. **There might be a problem of connectivity at this threshold because more than 5 connected components are needed to reach 95% of the total mask. Probably a smaller threshold will not cause this issue.**

Section 2.3 (0.c Background analysis)

1. **The null hypothesis that the background mean is 0 has been rejected because the p-value of the comparison is smaller than 0.001**
2. **There is a significant proportion of outlier values in the background (cdf5 ratio=17952.13)**

Contents

1	Input data	7
2	Level 0 analysis	14
2.1	Level 0.a Mass analysis	14
2.2	Level 0.b Mask analysis	15
2.3	Level 0.c Background analysis	20
2.4	Level 0.d B-factor analysis	21
2.5	Level 0.e Local resolution with DeepRes	22
2.6	Level 0.f Local B-factor	22
2.7	Level 0.g Local Occupancy	23
2.8	Level 0.h Hand correction	23

1 Input data

Input map: emd_2401.map

SHA256 hash: 88cb3f8bd9f5ae1b1c6063635272dca3cc529f74568886f403115ed55ec078b4

Voxel size: 1.370000 (Å)

Visualization threshold: 1.500000

Resolution estimated by user: (not reported)

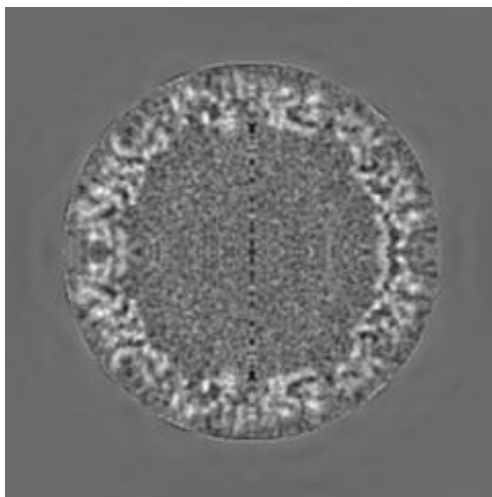
Orthogonal slices of the input map

Explanation:

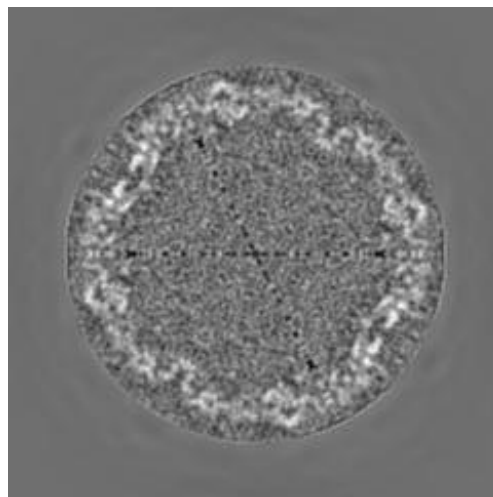
In the orthogonal slices of the map, the noise outside the protein should not have any structure (stripes going out, small blobs, particularly high or low densities, ...)

Results:

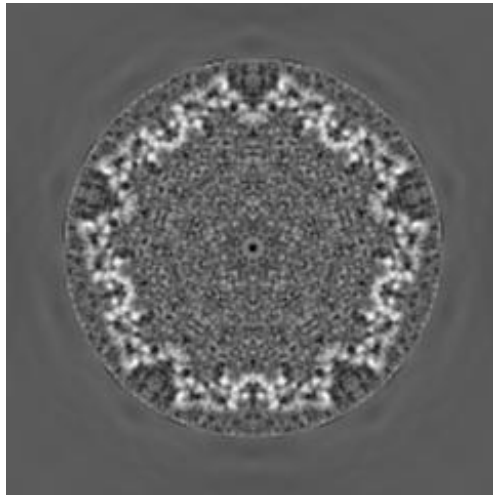
See Fig. 1.



(a) X Slice 120



(b) Y Slice 120



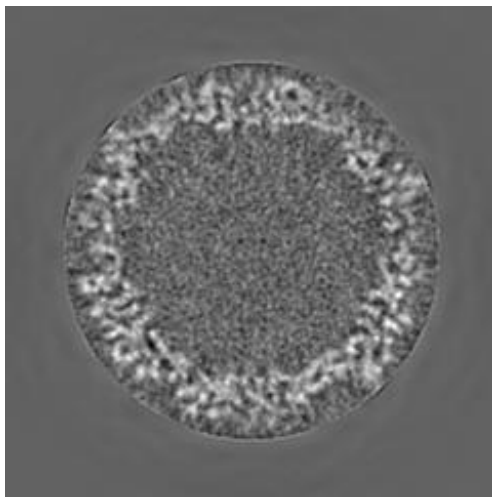
(c) Z Slice 120

Figure 1: Central slices of the input map in the three dimensions

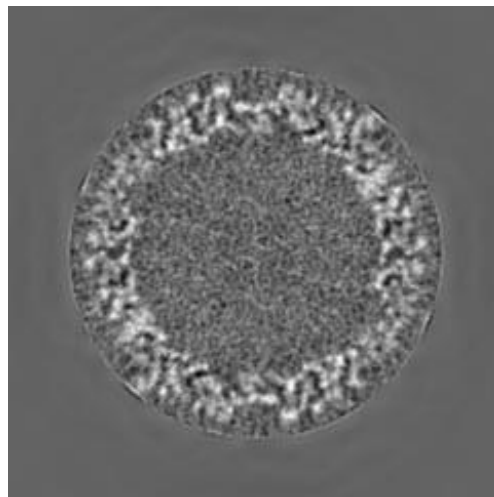
Orthogonal slices of maximum variance of the input map

Results:

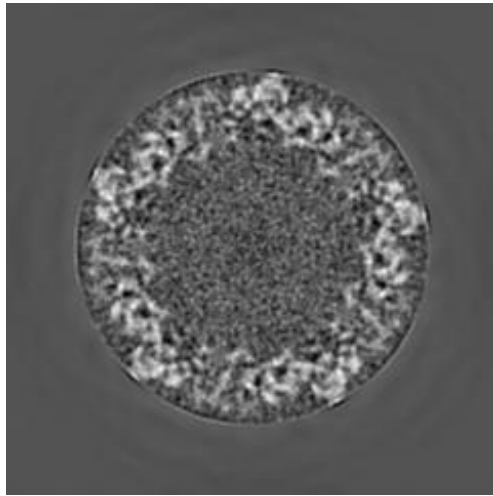
See Fig. 2.



(a) X Slice 112



(b) Y Slice 102



(c) Z Slice 87

Figure 2: Slices of maximum variation in the three dimensions

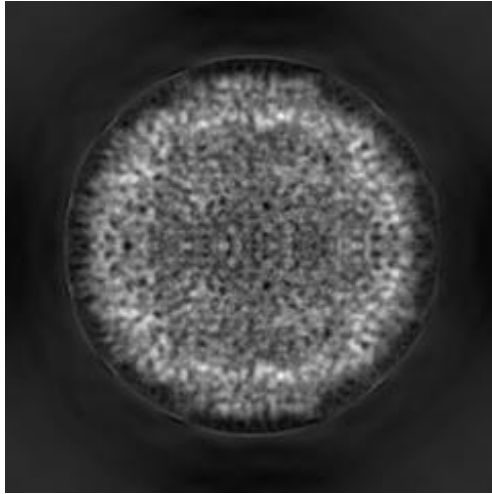
Orthogonal projections of the input map

Explanation:

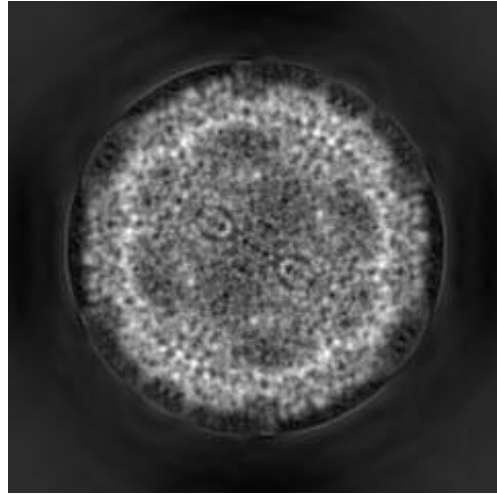
In the projections there should not be stripes (this is an indication of directional overweighting, or angular attraction), and there should not be a dark halo around or inside the structure (this is an indication of incorrect CTF correction or the reconstruction of a biased map).

Results:

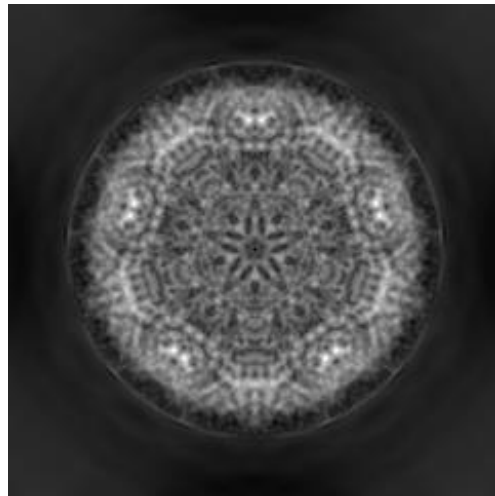
See Fig. 3.



(a) X Projection



(b) Y Projection



(c) Z Projection

Figure 3: Projections in the three dimensions

Isosurface views of the input map

Explanation:

An isosurface is the surface of all points that have the same gray value. In these views there should not be many artifacts or noise blobs around the map.

Results:
See Fig. 4.

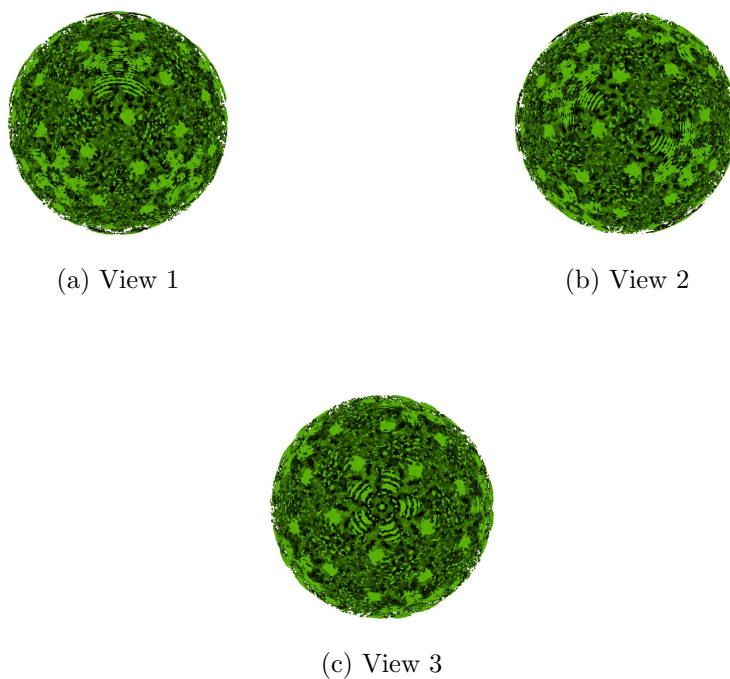


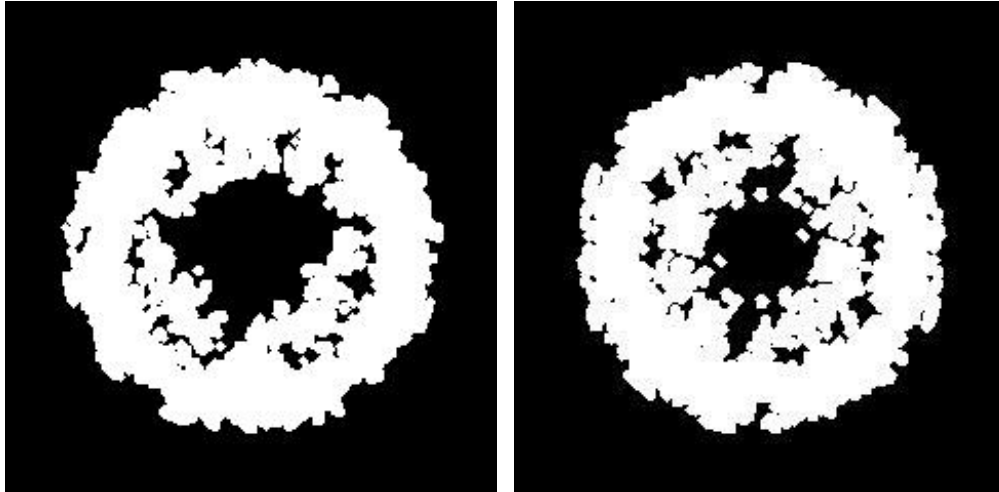
Figure 4: Isosurface at threshold=1.500000. Views generated by ChimeraX at a the following X, Y, Z angles: View 1 (0, -90, -90), View 2 (-90, 0, -90), View 3 (0, 0, 0).

Orthogonal slices of maximum variance of the mask with hard borders

Explanation:

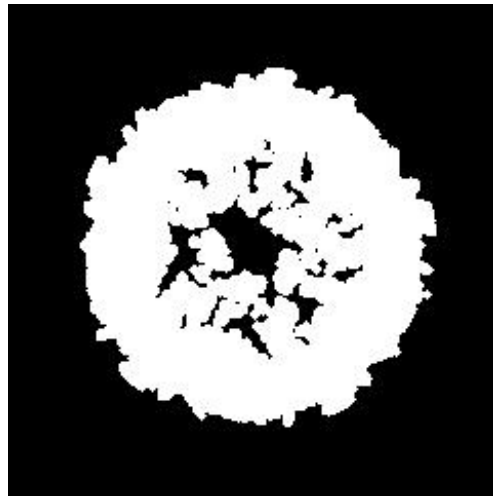
The mask with hard borders has been calculated at the suggested threshold 1.500000, the largest connected component was selected, and then dilated by 2Å.

Results:
See Fig. 5.



(a) X Slice 127

(b) Y Slice 100



(c) Z Slice 89

Figure 5: Slices of maximum variation in the three dimensions of the mask with hard borders

Orthogonal slices of maximum variance of the mask with soft borders

Explanation:

The mask with soft borders has been calculated at the suggested threshold 1.500000, the largest connected component was selected, and then dilated by

2Å.

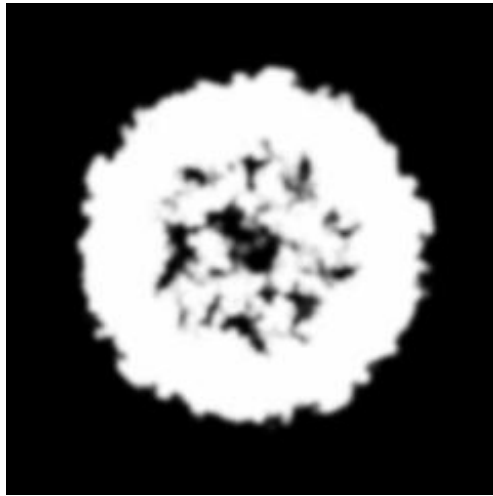
Results:
See Fig. 6.



(a) X Slice 127



(b) Y Slice 140



(c) Z Slice 88

Figure 6: Slices of maximum variation in the three dimensions of the mask with soft borders

2 Level 0 analysis

2.1 Level 0.a Mass analysis

Explanation:

The reconstructed map must be relatively well centered in the box, and there should be at least 30\AA (the exact size depends on the CTF) on each side to make sure that the CTF can be appropriately corrected.

Results:

The space from the left and right in X are 36.99 and 36.99 \AA , respectively. There is a decentering ratio $(\text{abs}(\text{Right-Left})/\text{Size})\%$ of 0.00%

The space from the left and right in Y are 36.99 and 36.99 \AA , respectively. There is a decentering ratio $(\text{abs}(\text{Right-Left})/\text{Size})\%$ of 0.00%

The space from the left and right in Z are 39.73 and 39.73 \AA , respectively. There is a decentering ratio $(\text{abs}(\text{Right-Left})/\text{Size})\%$ of 0.00%

The center of mass is at $(x,y,z)=(120.01,120.01,119.97)$. The decentering of the center of mass $(\text{abs}(\text{Center})/\text{Size})\%$ is 0.00, 0.00, and 0.01, respectively.

Automatic criteria: The validation is OK if 1) the decentering and center of mass less than 20% of the map dimensions in all directions, and 2) the extra space on each direction is more than 20% of the map dimensions. For local and focused refinement, or similar, warnings are expected.

STATUS: [OK](#)

2.2 Level 0.b Mask analysis

Explanation:

The map at the suggested threshold should have most of its mass concentrated in a single connected component. It is normal that after thresholding there are a few thousands of very small, disconnected noise blobs. However, there total mass should not exceed 10%. The raw mask (just thresholding) and the mask constructed for the analysis (thresholding + largest connected component + dilation) should significantly overlap. Overlap is defined by the overlapping coefficient $(\text{size}(\text{Raw AND Constructed})/\text{size}(\text{Raw}))$ that is a number between 0 and 1, the closer to 1, the more they agree.

Results:

Raw mask: At threshold 1.500000, there are 8309 connected components with a total number of voxels of 976219 and a volume of 2510203.65 Å³ (see Fig. 7). The size and percentage of the total number of voxels for the raw mask are listed below (up to 95% of the mass or the first 100 clusters, whatever happens first), the list contains (No. voxels (volume in Å³), percentage, cumulated percentage):

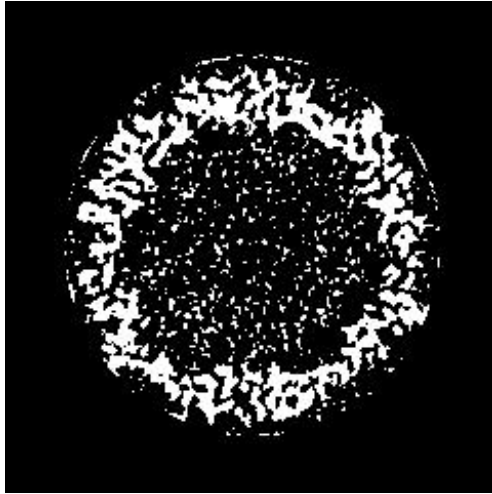
(887950 (2283232.90), 90.96, 90.96)(1481 (3808.17), 0.15, 91.11)(1458 (3749.03), 0.15, 91.26)(1413 (3633.32), 0.14, 91.40)(1407 (3617.89), 0.14, 91.55)(1403 (3607.61), 0.14, 91.69)(1401 (3602.47), 0.14, 91.84)(1399 (3597.32), 0.14, 91.98)(1397 (3592.18), 0.14, 92.12)(1285 (3304.19), 0.13, 92.25)(1280 (3291.33),

0.13, 92.38)(563 (1447.67), 0.06, 92.44)(485 (1247.11), 0.05, 92.49)(280 (719.98),
 0.03, 92.52)(270 (694.27), 0.03, 92.55)(263 (676.27), 0.03, 92.58)(262 (673.69),
 0.03, 92.60)(262 (673.69), 0.03, 92.63)(234 (601.70), 0.02, 92.65)(233 (599.13),
 0.02, 92.68)(227 (583.70), 0.02, 92.70)(226 (581.13), 0.02, 92.72)(214 (550.27),
 0.02, 92.74)(212 (545.13), 0.02, 92.77)(212 (545.13), 0.02, 92.79)(209 (537.41),
 0.02, 92.81)(208 (534.84), 0.02, 92.83)(207 (532.27), 0.02, 92.85)(192 (493.70),
 0.02, 92.87)(192 (493.70), 0.02, 92.89)(178 (457.70), 0.02, 92.91)(177 (455.13),
 0.02, 92.93)(173 (444.84), 0.02, 92.95)(171 (439.70), 0.02, 92.96)(160 (411.42),
 0.02, 92.98)(160 (411.42), 0.02, 93.00)(159 (408.85), 0.02, 93.01)(158 (406.27),
 0.02, 93.03)(156 (401.13), 0.02, 93.04)(149 (383.13), 0.02, 93.06)(148 (380.56),
 0.02, 93.07)(147 (377.99), 0.02, 93.09)(146 (375.42), 0.01, 93.10)(146 (375.42),
 0.01, 93.12)(145 (372.85), 0.01, 93.13)(143 (367.70), 0.01, 93.15)(143 (367.70),
 0.01, 93.16)(141 (362.56), 0.01, 93.18)(141 (362.56), 0.01, 93.19)(140 (359.99),
 0.01, 93.21)(135 (347.13), 0.01, 93.22)(134 (344.56), 0.01, 93.23)(134 (344.56),
 0.01, 93.25)(134 (344.56), 0.01, 93.26)(132 (339.42), 0.01, 93.28)(131 (336.85),
 0.01, 93.29)(126 (323.99), 0.01, 93.30)(126 (323.99), 0.01, 93.31)(123 (316.28),
 0.01, 93.33)(121 (311.13), 0.01, 93.34)(120 (308.56), 0.01, 93.35)(114 (293.13),
 0.01, 93.36)(110 (282.85), 0.01, 93.38)(109 (280.28), 0.01, 93.39)(108 (277.71),
 0.01, 93.40)(105 (269.99), 0.01, 93.41)(105 (269.99), 0.01, 93.42)(102 (262.28),
 0.01, 93.43)(102 (262.28), 0.01, 93.44)(102 (262.28), 0.01, 93.45)(102 (262.28),
 0.01, 93.46)(101 (259.71), 0.01, 93.47)(101 (259.71), 0.01, 93.48)(100 (257.14),
 0.01, 93.49)(100 (257.14), 0.01, 93.50)(100 (257.14), 0.01, 93.51)(99 (254.56),
 0.01, 93.52)(99 (254.56), 0.01, 93.53)(97 (249.42), 0.01, 93.54)(97 (249.42),
 0.01, 93.55)(96 (246.85), 0.01, 93.56)(95 (244.28), 0.01, 93.57)(91 (233.99),
 0.01, 93.58)(90 (231.42), 0.01, 93.59)(90 (231.42), 0.01, 93.60)(90 (231.42),
 0.01, 93.61)(90 (231.42), 0.01, 93.62)(90 (231.42), 0.01, 93.63)(89 (228.85),
 0.01, 93.64)(89 (228.85), 0.01, 93.65)(89 (228.85), 0.01, 93.65)(88 (226.28),
 0.01, 93.66)(88 (226.28), 0.01, 93.67)(87 (223.71), 0.01, 93.68)(87 (223.71),
 0.01, 93.69)(87 (223.71), 0.01, 93.70)(86 (221.14), 0.01, 93.71)(85 (218.57),
 0.01, 93.72)(85 (218.57), 0.01, 93.73)

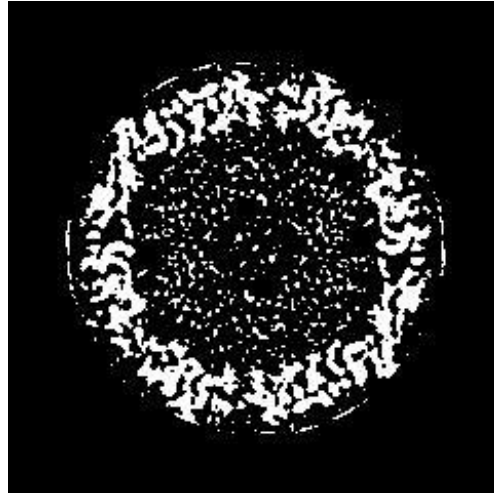
Number of components to reach 95% of the mass: 297

The average size of the remaining 8012 components is 6.09 voxels (2.57 Å³). Their size go from 47 voxels (120.85 Å³) to 1 voxels (2.57 Å³).

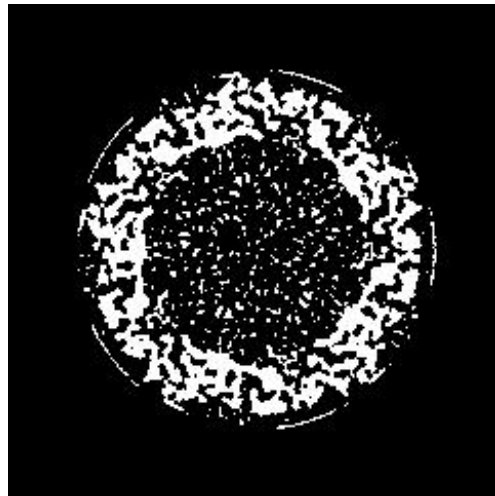
The slices of the raw mask can be seen in Fig. 7.



(a) X Slice 128



(b) Y Slice 135



(c) Z Slice 151

Figure 7: Maximum variance slices in the three dimensions of the raw mask

The following table shows the variation of the mass enclosed at different thresholds (see Fig. 8):

Threshold	Voxel mass	Molecular mass(kDa)	# Aminoacids
0.4030	1986329.00	4231.61	38469.18
0.8060	1504604.00	3205.36	29139.62
1.2089	1166925.00	2485.98	22599.80
1.6119	913803.00	1946.74	17697.60
2.0149	730291.00	1555.79	14143.53
2.4179	596448.00	1270.65	11551.39
2.8209	489555.00	1042.93	9481.20
3.2238	397886.00	847.64	7705.85
3.6268	318401.00	678.31	6166.46
4.0298	249408.00	531.33	4830.28
4.4328	190543.00	405.93	3690.24
4.8357	142869.00	304.36	2766.94
5.2387	103447.00	220.38	2003.46
5.6417	72929.00	155.37	1412.41
6.0447	49785.00	106.06	964.18
6.4477	32426.00	69.08	627.99
6.8506	20290.00	43.23	392.96
7.2536	12286.00	26.17	237.94
7.6566	7024.00	14.96	136.03
8.0596	3711.00	7.91	71.87
8.4626	1636.00	3.49	31.68
8.8655	592.00	1.26	11.47
9.2685	123.00	0.26	2.38
9.6715	22.00	0.05	0.43

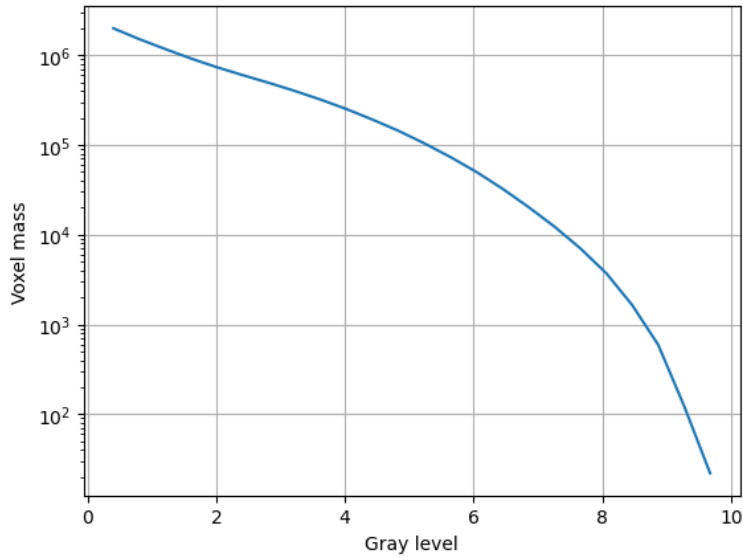


Figure 8: Voxel mass as a function of the gray level.

Constructed mask: After keeping the largest component of the previous mask and dilating it by 2\AA , there is a total number of voxels of 2613171 and a volume of 6719385.09\AA^3 . The overlap between the raw and constructed mask is 0.92.

Automatic criteria: The validation is OK if 1) to keep 95% of the mass we need to keep at most 5 connected components; and 2) the average volume of the blobs outside the given threshold has a size smaller than 5\AA^3 ; and 3) the overlap between the raw mask and the mask constructed for the analysis is larger than 75%.

WARNINGS: 1 warnings

1. **There might be a problem of connectivity at this threshold because more than 5 connected components are needed to reach 95% of the total mask. Probably a smaller threshold will not cause this issue.**

2.3 Level 0.c Background analysis

Explanation:

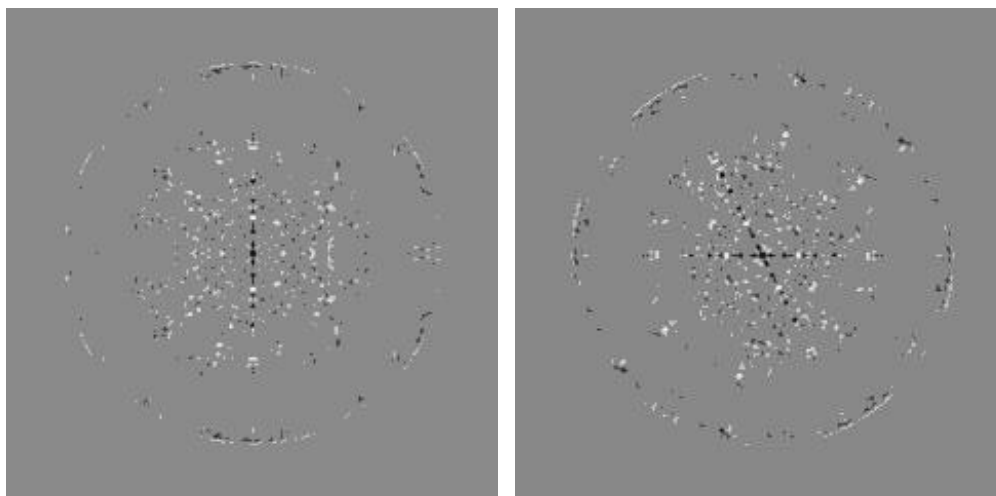
Background is defined as the region outside the macromolecule mask. The background mean should be zero, and the number of voxels with a very low or very high value (below 5 standard deviations of the noise) should be very small and they should be randomly distributed without any specific structure. Sometimes, you can see some structure due to the symmetry of the structure.

Results:

The null hypothesis that the background mean is 0 was tested with a one-sample Student's t-test. The resulting t-statistic and p-value were 276.32 and 0.000000, respectively.

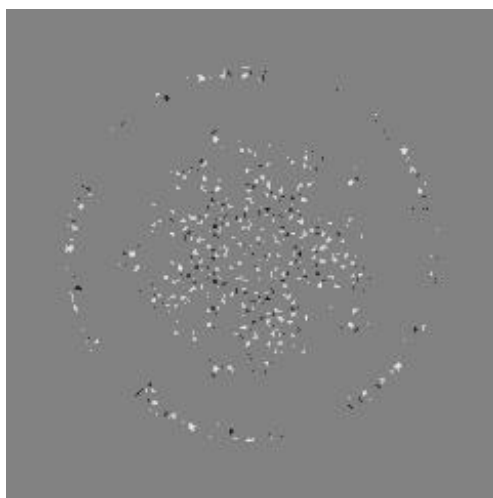
The mean and standard deviation (sigma) of the background were 0.025122 and 0.304413. The percentage of background voxels whose absolute value is larger than 5 times the standard deviation is 1.03 % (see Fig. 9). The same percentage from a Gaussian would be 0.000057% (ratio between the two percentages: 17952.131098).

Slices of the background beyond 5*sigma can be seen in Fig. 9.



(a) X Slice 120

(b) Y Slice 120



(c) Z Slice 132

Figure 9: Maximum variance slices in the three dimensions of the parts of the background beyond 5σ

Automatic criteria: The validation is OK if 1) the p-value of the null hypothesis that the background has 0 mean is larger than 0.001; and 2) the number of voxels above or below 5 sigma is smaller than 20 times the amount expected for a Gaussian with the same standard deviation whose mean is 0.

WARNINGS: 2 warnings

1. **The null hypothesis that the background mean is 0 has been rejected because the p-value of the comparison is smaller than 0.001**
2. **There is a significant proportion of outlier values in the background (cdf5 ratio=17952.13)**

2.4 Level 0.d B-factor analysis

Explanation:

The B-factor line (see this [link](#) for more details) fitted between 15\AA and the resolution reported should have a slope that is between 0 and 300 \AA^2 .

Results:

This method cannot be applied to maps with no resolution reported.

STATUS: Does not apply

2.5 Level 0.e Local resolution with DeepRes

Explanation:

DeepRes (see this [link](#) for more details) measures the local resolution using a neural network that has been trained on the appearance of atomic structures at different resolutions. Then, by comparing the local appearance of the input map to the appearance of the atomic structures a local resolution label can be assigned.

Results:

This method cannot be applied to maps with no resolution reported.

STATUS: Does not apply

2.6 Level 0.f Local B-factor

Explanation:

LocBfactor (see this [link](#) for more details) estimates a local resolution B-factor by decomposing the input map into a local magnitude and phase term using the spiral transform.

Results:

This method cannot be applied to maps with no resolution reported.

STATUS: Does not apply

2.7 Level 0.g Local Occupancy

Explanation:

LocOccupancy (see this [link](#) for more details) estimates the occupancy of a voxel by the macromolecule.

Results:

This method cannot be applied to maps with no resolution reported.

STATUS: Does not apply

2.8 Level 0.h Hand correction

Explanation:

Deep Hand (see this [link](#) for more details) determines the correction of the hand for those maps with a resolution smaller than 5Å. The method calculates a value between 0 (correct hand) and 1 (incorrect hand) using a neural network to assign its hand.

Results:

This method cannot be applied to maps with no resolution reported.

STATUS: Does not apply