



Public Data-based Report



# Validation Report Service

## Cryo-EM Map Validation Report

Report to assess Cryo-EM Volume Map at Level(s) 0

---

This report has been generated based on data publicly available at [EMDB](#).

### Basic Entry Information:

**EMDB ID:** [EMD-3288](#)

**Title:** HSV bubblegram imaging

**Authors:** [See EMDB entry link](#)

**Deposited on:** 2015-12-23T00:00:00

**Reported Resolution:** 25.0 Å

---

### Contact Us:

Instruct Image Processing Center ([I<sup>2</sup>PC](#))

Biocomputing Unit ([BCU](#))

[i2pc@cnb.csic.es](mailto:i2pc@cnb.csic.es)

[VRS Website](#)

National Center for Biotechnology (CNB)  
St/ Darwin, 3 (Autonomous University of Madrid)  
28049 Cantoblanco, Madrid (Spain)

Last update: **August 23, 2024, 9:16pm**

## Context

Cryo-electron microscopy is currently one of the most active techniques in Structural Biology. The number of maps deposited at the [Electron Microscopy Data Bank](#) is rapidly growing every year and keeping the quality of the submitted maps is essential to maintain the scientific quality of the field. The ultimate quality measure is the consistency of the map and an atomic model. However, this is only possible for high resolution maps. Over the years there have been many suggestions about validation measures of 3DEM maps. Unfortunately, most of these measures are not currently in use for their spread in multiple software tools and the associated difficulty to access them. To alleviate this problem, we made available a validation grading system that evaluate the information provided to assess the map.

This system grades a map from 0 to 5 depending on the amount of information available. In this way, a map could be validated at Level 0 (the deposited map), 1 (two half maps), 2 (2D classes), 3 (particles), 4 (... + angular assignment), 5 (... + micrographs and coordinates). In addition, we can have three optional qualifiers: A (... + atomic model), W (... + image processing workflow), and O (... + other techniques).

This Validation Report Service is explained in more detail in this [paper](#). For more information about the different methods and softwares used for this report, see the references [here](#).

### Summarized overall quality

The map seems to be well centered. There seems to be a problem with the suggested threshold (see Sec. [2.2](#)). There seems to be a problem with the map's background (see Sec. [2.3](#)). There seems to be a problem with its local B-factor (see Sec. [2.6](#)).

**The overall score (passing tests) of this report is 3 out of 6 evaluable items.**

0.a Mass analysis	Sec. 2.1	OK
0.b Mask analysis	Sec. 2.2	1 warnings
0.c Background analysis	Sec. 2.3	2 warnings
0.d B-factor analysis	Sec. 2.4	OK
0.e DeepRes	Sec. 2.5	Does not apply
0.f LocBfactor	Sec. 2.6	1 warnings
0.g LocOccupancy	Sec. 2.7	OK
0.h Deep hand	Sec. 2.8	Does not apply

Summary of the warnings across sections.

Section 2.2 (0.b Mask analysis)

1. **There might be a problem with noise and artifacts, because the average noise blob has a volume of 298.613422 Å<sup>3</sup>.**

Section 2.3 (0.c Background analysis)

1. **The null hypothesis that the background mean is 0 has been rejected because the p-value of the comparison is smaller than 0.001**
2. **There is a significant proportion of outlier values in the background (cdf5 ratio=1817.14)**

Section 2.6 (0.f LocBfactor)

1. **The median B-factor is out of the interval [-300,0]**

# Contents

<b>1</b>	<b>Input data</b>	<b>7</b>
<b>2</b>	<b>Level 0 analysis</b>	<b>14</b>
2.1	Level 0.a Mass analysis . . . . .	14
2.2	Level 0.b Mask analysis . . . . .	15
2.3	Level 0.c Background analysis . . . . .	19
2.4	Level 0.d B-factor analysis . . . . .	21
2.5	Level 0.e Local resolution with DeepRes . . . . .	24
2.6	Level 0.f Local B-factor . . . . .	24
2.7	Level 0.g Local Occupancy . . . . .	27
2.8	Level 0.h Hand correction . . . . .	30

# 1 Input data

Input map: emd\_3288.map

SHA256 hash: 86f8923ecec7168d58c49c7bd2f657248b0432cac36f259145cf653fdefa3dfa

Voxel size: 6.684000 (Å)

Visualization threshold: 6691.000000

Resolution estimated by user: 25.0

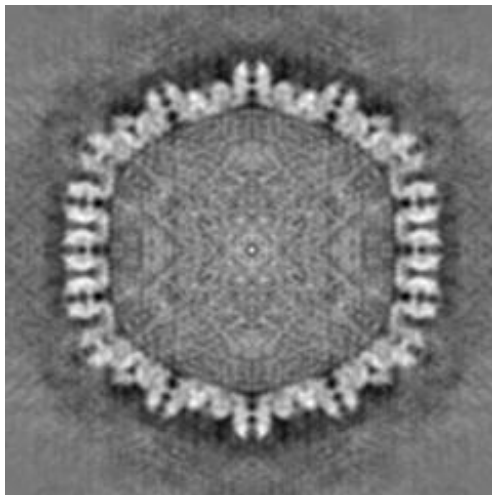
## Orthogonal slices of the input map

### **Explanation:**

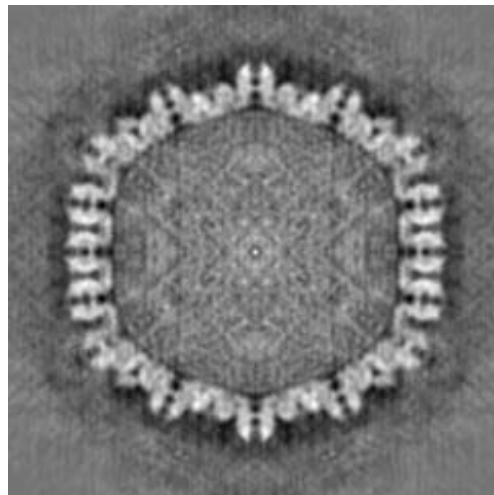
In the orthogonal slices of the map, the noise outside the protein should not have any structure (stripes going out, small blobs, particularly high or low densities, ...)

### **Results:**

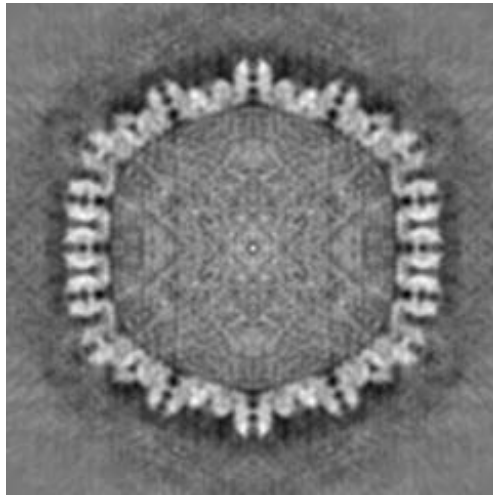
See Fig. 1.



(a) X Slice 120



(b) Y Slice 120



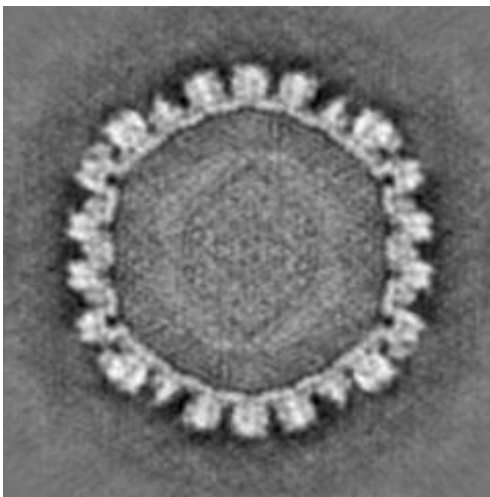
(c) Z Slice 120

Figure 1: Central slices of the input map in the three dimensions

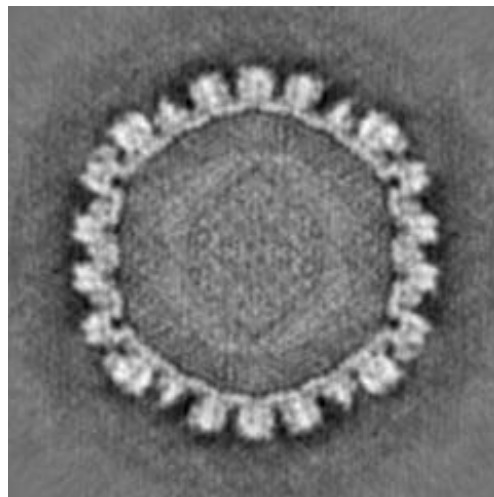
Orthogonal slices of maximum variance of the input map

**Results:**

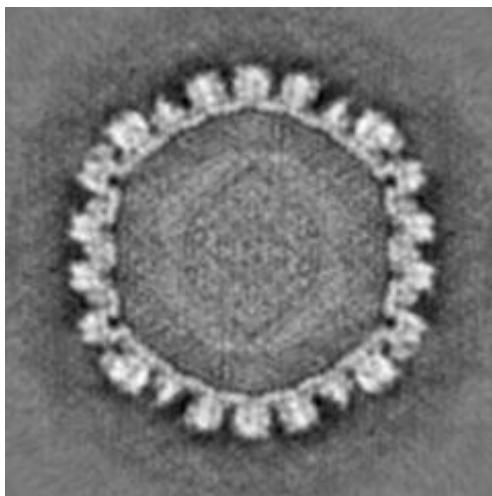
See Fig. 2.



(a) X Slice 102



(b) Y Slice 138



(c) Z Slice 102

Figure 2: Slices of maximum variation in the three dimensions

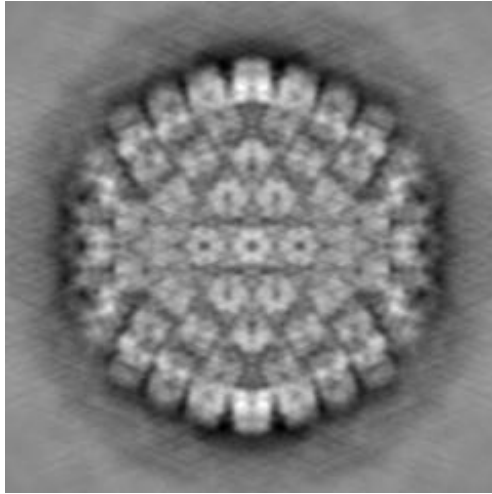
### Orthogonal projections of the input map

#### **Explanation:**

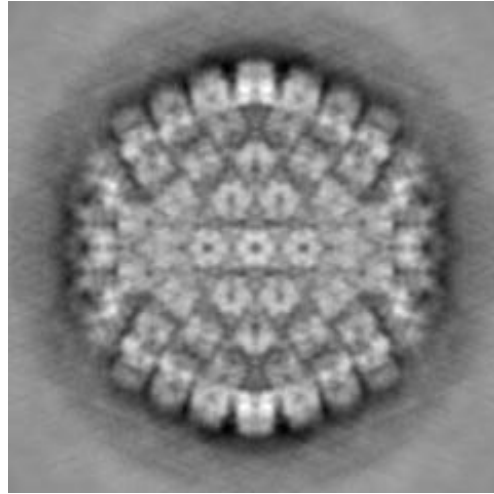
In the projections there should not be stripes (this is an indication of directional overweighting, or angular attraction), and there should not be a dark halo around or inside the structure (this is an indication of incorrect CTF correction or the reconstruction of a biased map).

#### **Results:**

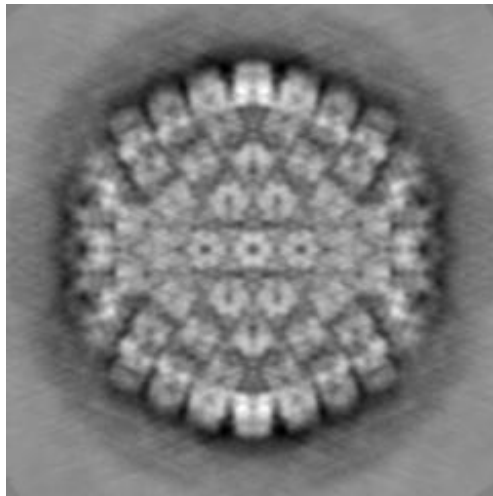
See Fig. 3.



(a) X Projection



(b) Y Projection



(c) Z Projection

Figure 3: Projections in the three dimensions

### Isosurface views of the input map

#### **Explanation:**

An isosurface is the surface of all points that have the same gray value. In these views there should not be many artifacts or noise blobs around the map.

**Results:**  
See Fig. 4.

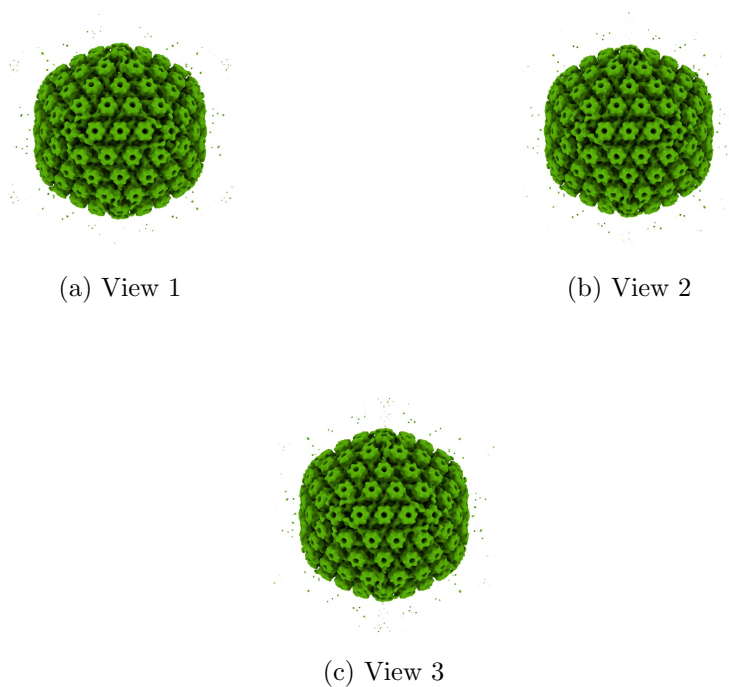


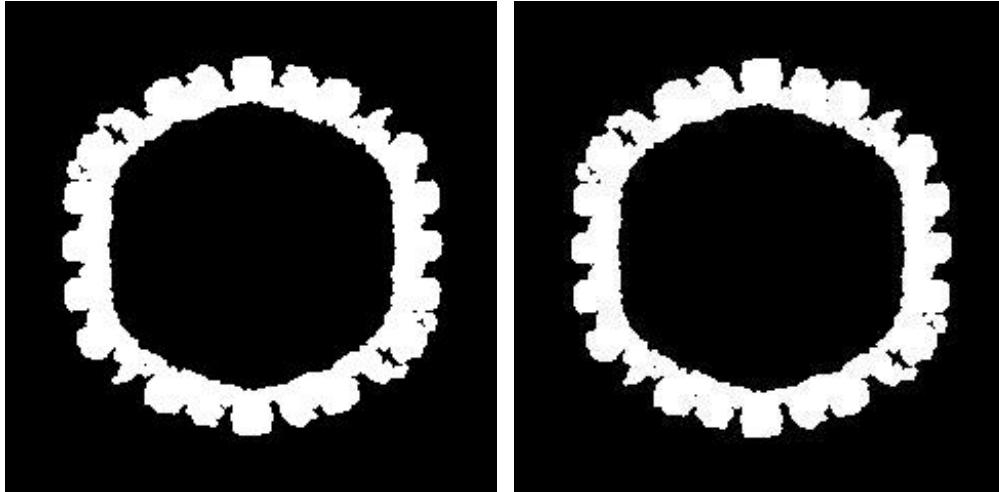
Figure 4: Isosurface at threshold=6691.000000. Views generated by ChimeraX at a the following X, Y, Z angles: View 1 (0, -90, -90), View 2 (-90, 0, -90), View 3 (0, 0, 0).

### Orthogonal slices of maximum variance of the mask with hard borders

#### **Explanation:**

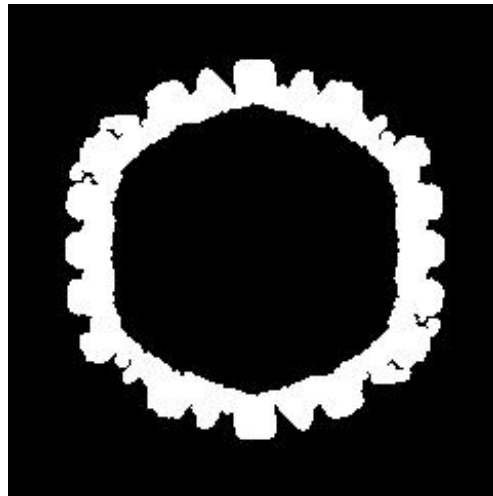
The mask with hard borders has been calculated at the suggested threshold 6691.000000, the largest connected component was selected, and then dilated by 2Å.

**Results:**  
See Fig. 5.



(a) X Slice 115

(b) Y Slice 125



(c) Z Slice 116

Figure 5: Slices of maximum variation in the three dimensions of the mask with hard borders

Orthogonal slices of maximum variance of the mask with soft borders

**Explanation:**

The mask with soft borders has been calculated at the suggested threshold 6691.000000, the largest connected component was selected, and then dilated

by 2Å.

**Results:**  
See Fig. 6.



(a) X Slice 116



(b) Y Slice 125



(c) Z Slice 115

Figure 6: Slices of maximum variation in the three dimensions of the mask with soft borders

## 2 Level 0 analysis

### 2.1 Level 0.a Mass analysis

#### **Explanation:**

The reconstructed map must be relatively well centered in the box, and there should be at least  $30\text{\AA}$  (the exact size depends on the CTF) on each side to make sure that the CTF can be appropriately corrected.

#### **Results:**

The space from the left and right in X are  $180.47$  and  $180.47\text{\AA}$ , respectively. There is a decentering ratio  $(\text{abs}(\text{Right-Left})/\text{Size})\%$  of  $0.00\%$

The space from the left and right in Y are  $180.47$  and  $180.47\text{\AA}$ , respectively. There is a decentering ratio  $(\text{abs}(\text{Right-Left})/\text{Size})\%$  of  $0.00\%$

The space from the left and right in Z are  $187.15$  and  $187.15\text{\AA}$ , respectively. There is a decentering ratio  $(\text{abs}(\text{Right-Left})/\text{Size})\%$  of  $0.00\%$

The center of mass is at  $(x,y,z)=(120.81,120.76,120.53)$ . The decentering of the center of mass  $(\text{abs}(\text{Center})/\text{Size})\%$  is 0.34, 0.32, and 0.22, respectively.

**Automatic criteria:** The validation is OK if 1) the decentering and center of mass less than 20% of the map dimensions in all directions, and 2) the extra space on each direction is more than 20% of the map dimensions. For local and focused refinement, or similar, warnings are expected.

**STATUS:** [OK](#)

## 2.2 Level 0.b Mask analysis

### Explanation:

The map at the suggested threshold should have most of its mass concentrated in a single connected component. It is normal that after thresholding there are a few thousands of very small, disconnected noise blobs. However, there total mass should not exceed 10%. The raw mask (just thresholding) and the mask constructed for the analysis (thresholding + largest connected component + dilation) should significantly overlap. Overlap is defined by the overlapping coefficient  $(\text{size}(\text{Raw AND Constructed})/\text{size}(\text{Raw}))$  that is a number between 0 and 1, the closer to 1, the more they agree.

### Results:

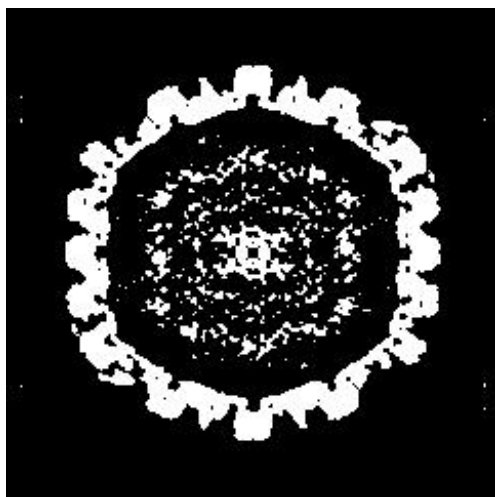
Raw mask: At threshold 6691.000000, there are 2479 connected components with a total number of voxels of 1189717 and a volume of  $355265463.99 \text{ \AA}^3$  (see Fig. 7). The size and percentage of the total number of voxels for the raw mask are listed below (up to 95% of the mass or the first 100 clusters, whatever happens first), the list contains (No. voxels (volume in  $\text{Å}^3$ ), percentage, cumulated percentage):

(1029478 (307415947.94), 86.53, 86.53)(128391 (38339275.80), 10.79, 97.32)

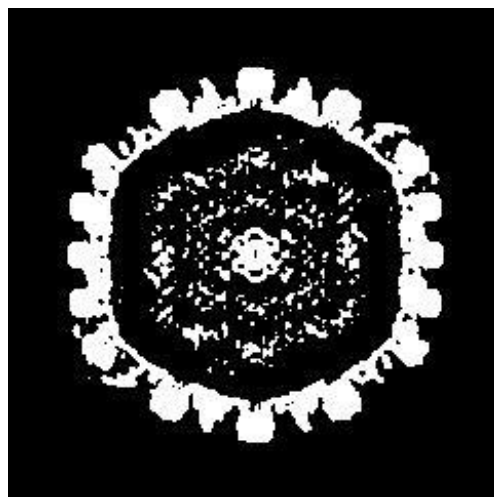
Number of components to reach 95% of the mass: 2

The average size of the remaining 2477 components is 12.86 voxels (298.61  $\text{\AA}^3$ ). Their size go from 128391 voxels (38339275.80  $\text{\AA}^3$ ) to 1 voxels (298.61  $\text{\AA}^3$ ).

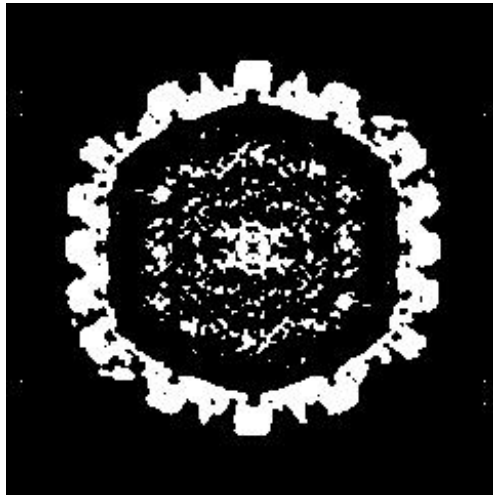
The slices of the raw mask can be seen in Fig. 7.



(a) X Slice 123



(b) Y Slice 116



(c) Z Slice 123

Figure 7: Maximum variance slices in the three dimensions of the raw mask

The following table shows the variation of the mass enclosed at different thresholds (see Fig. 8):

<b>Threshold</b>	<b>Voxel mass</b>	<b>Molecular mass(kDa)</b>	<b># Aminoacids</b>
1572.0714	3344360.00	827399.16	7521810.52
3144.1428	1884311.00	466181.07	4238009.75
4716.2142	1439936.00	356242.10	3238564.55
6288.2856	1232213.00	304851.15	2771374.11
7860.3570	1079233.00	267003.69	2427306.31
9432.4284	954408.00	236121.82	2146562.01
11004.4998	846977.00	209543.25	1904938.61
12576.5713	743427.00	183924.84	1672043.99
14148.6427	641910.00	158809.40	1443721.79
15720.7141	541794.00	134040.56	1218550.58
17292.7855	446771.00	110531.75	1004834.05
18864.8569	361788.00	89506.84	813698.52
20436.9283	285937.00	70741.20	643101.80
22008.9997	218780.00	54126.47	492058.78
23581.0711	163253.00	40389.01	367172.83
25153.1425	119697.00	29613.20	269210.90
26725.2139	83746.00	20718.87	188353.39
28297.2853	54180.00	13404.20	121856.41
29869.3567	31461.00	7783.49	70759.03
31441.4281	16119.00	3987.86	36253.29
33013.4995	7303.00	1806.77	16425.20
34585.5709	2221.00	549.48	4995.26
36157.6423	449.00	111.08	1009.85
37729.7138	58.00	14.35	130.45

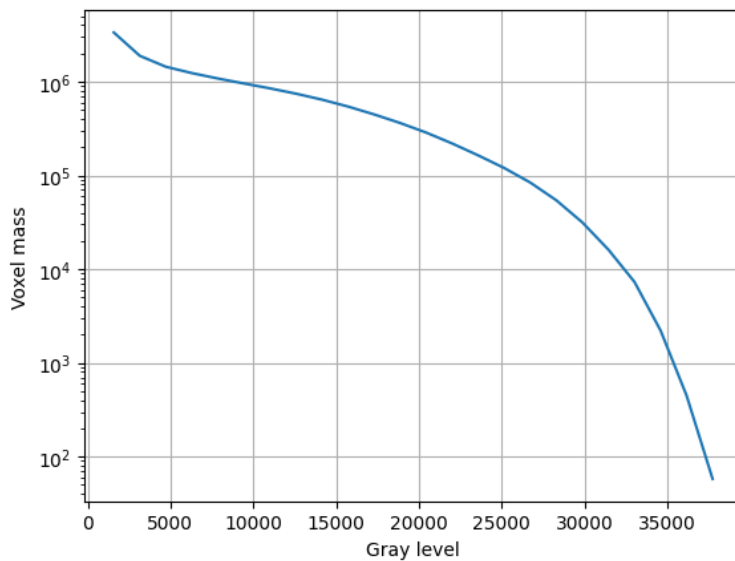


Figure 8: Voxel mass as a function of the gray level.

Constructed mask: After keeping the largest component of the previous mask and dilating it by  $2\text{\AA}$ , there is a total number of voxels of 1518055 and a volume of  $453311597.58 \text{\AA}^3$ . The overlap between the raw and constructed mask is 0.87.

**Automatic criteria**: The validation is OK if 1) to keep 95% of the mass we need to keep at most 5 connected components; and 2) the average volume of the blobs outside the given threshold has a size smaller than  $5\text{\AA}^3$ ; and 3) the overlap between the raw mask and the mask constructed for the analysis is larger than 75%.

**WARNINGS**: 1 warnings

1. **There might be a problem with noise and artifacts, because the average noise blob has a volume of  $298.613422 \text{\AA}^3$ .**

### 2.3 Level 0.c Background analysis

**Explanation:**

Background is defined as the region outside the macromolecule mask. The

background mean should be zero, and the number of voxels with a very low or very high value (below 5 standard deviations of the noise) should be very small and they should be randomly distributed without any specific structure. Sometimes, you can see some structure due to the symmetry of the structure.

### Results:

The null hypothesis that the background mean is 0 was tested with a one-sample Student's t-test. The resulting t-statistic and p-value were -1313.46 and 0.000000, respectively.

The mean and standard deviation ( $\sigma$ ) of the background were -1837.526489 and 4907.666992. The percentage of background voxels whose absolute value is larger than 5 times the standard deviation is 0.10 % (see Fig. 9). The same percentage from a Gaussian would be 0.000057% (ratio between the two percentages: 1817.141438).

Slices of the background beyond  $5 \cdot \sigma$  can be seen in Fig. 9.



(a) X Slice 81



(b) Y Slice 132



(c) Z Slice 132

Figure 9: Maximum variance slices in the three dimensions of the parts of the background beyond  $5\sigma$

**Automatic criteria:** The validation is OK if 1) the p-value of the null hypothesis that the background has 0 mean is larger than 0.001; and 2) the number of voxels above or below 5 sigma is smaller than 20 times the amount expected for a Gaussian with the same standard deviation whose mean is 0.

**WARNINGS:** 2 warnings

1. **The null hypothesis that the background mean is 0 has been rejected because the p-value of the comparison is smaller than 0.001**
2. **There is a significant proportion of outlier values in the background (cdf5 ratio=1817.14)**

## 2.4 Level 0.d B-factor analysis

### Explanation:

The B-factor line (see this [link](#) for more details) fitted between  $15\text{\AA}$  and the resolution reported should have a slope that is between 0 and  $300\text{ \AA}^2$ .

### Results:

Fig. 10 shows the logarithm (in natural units) of the structure factor (the module squared of the Fourier transform) of the experimental map, its fitted line, and the corrected map. The estimated B-factor was nan. The fitted line was  $\log(|F|^2) = \text{nan}/R^2 + (\text{nan})$ .

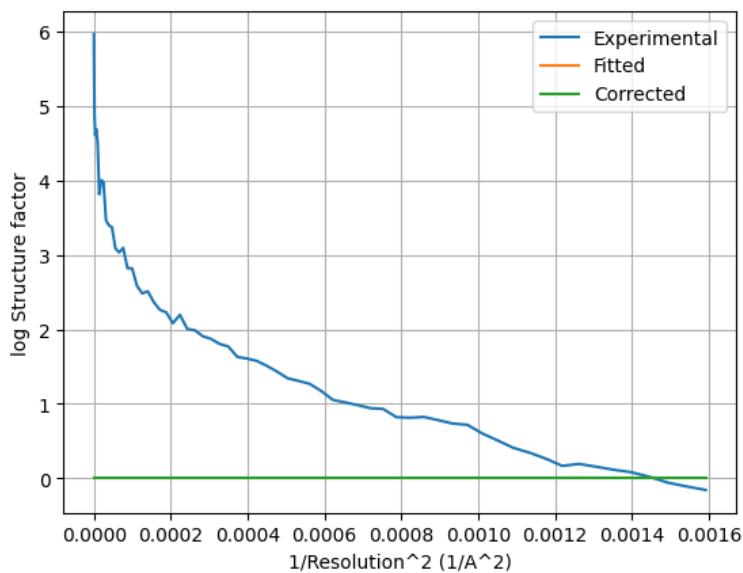


Figure 10: Guinier plot. The X-axis is the square of the inverse of the resolution in Å.



Figure 11: Slices of maximum variation in the three dimensions of the B-factor corrected map

**Automatic criteria:** The validation is OK if the B-factor is in the range  $[-300,0]$ .

STATUS: [OK](#)

## 2.5 Level 0.e Local resolution with DeepRes

### Explanation:

DeepRes (see this [link](#) for more details) measures the local resolution using a neural network that has been trained on the appearance of atomic structures at different resolutions. Then, by comparing the local appearance of the input map to the appearance of the atomic structures a local resolution label can be assigned.

### Results:

This method cannot be applied to maps with a resolution worse than 13Å.

STATUS: [Does not apply](#)

## 2.6 Level 0.f Local B-factor

### Explanation:

LocBfactor (see this [link](#) for more details) estimates a local resolution B-factor by decomposing the input map into a local magnitude and phase term using the spiral transform.

### Results:

Fig. 12 shows the histogram of the local B-factor according to LocBfactor. Some representative percentiles are:

Percentile	Local B-factor ( $\text{\AA}^{-2}$ )
2.5%	-23262.34
25%	-21304.62
50%	-20266.90
75%	-19179.96
97.5%	-16987.88

Fig. 13 shows some representative views of the local B-factor.

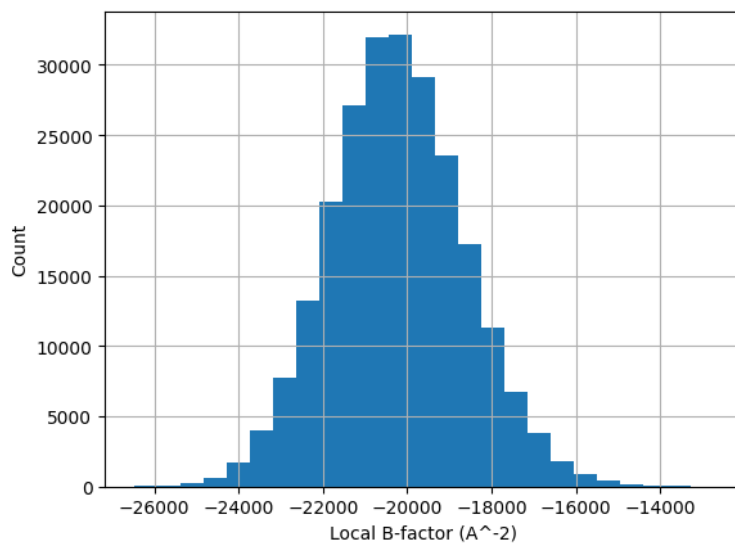
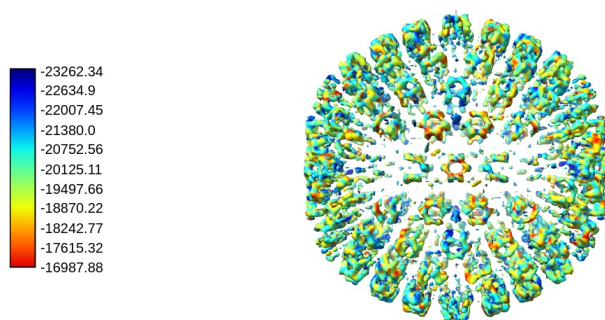
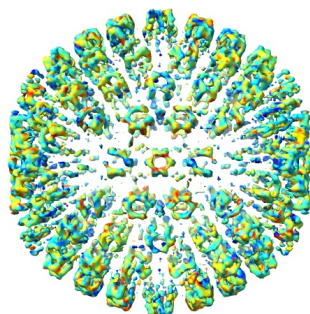
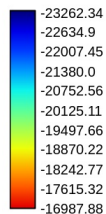


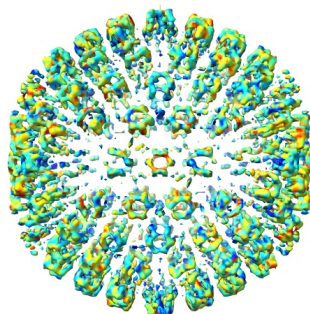
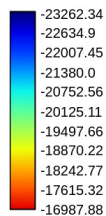
Figure 12: Histogram of the local B-factor according to LocBfactor.



(a) View 1



(b) View 2



(c) View 3

Figure 13: Local B-factor according to LocBfactor. Views generated by ChimeraX at a the following X, Y, Z angles: View 1 (0, -90, -90), View 2 (-90, 0, -90), View 3 (0, 0, 0).

**Automatic criteria:** The validation is OK if the median B-factor is in the range [-300,0].

**WARNINGS:** 1 warnings

1. **The median B-factor is out of the interval [-300,0]**

## 2.7 Level 0.g Local Occupancy

### Explanation:

LocOccupancy (see this [link](#) for more details) estimates the occupancy of a voxel by the macromolecule.

### Results:

Fig. 14 shows the histogram of the local occupancy according to LocOccupancy. Some representative percentiles are:

Percentile	Local Occupancy [0-1]
2.5%	0.00
25%	0.75
50%	1.00
75%	1.00
97.5%	1.00

Fig. 15 shows some representative views of the local occupancy.

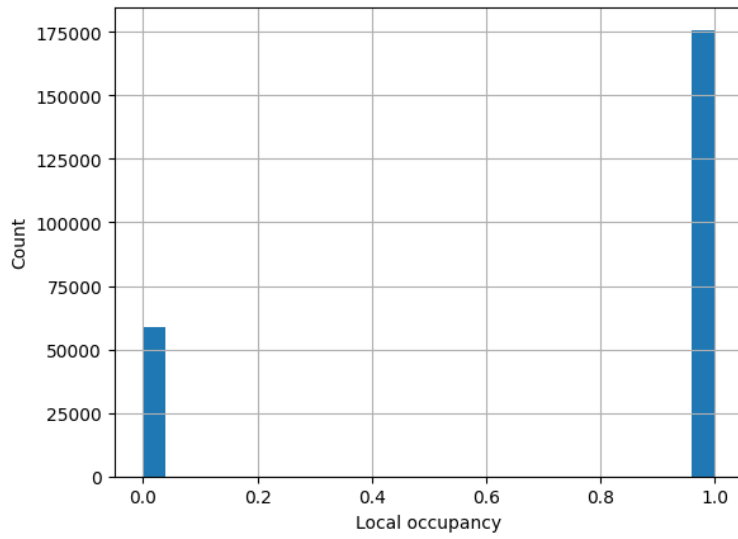
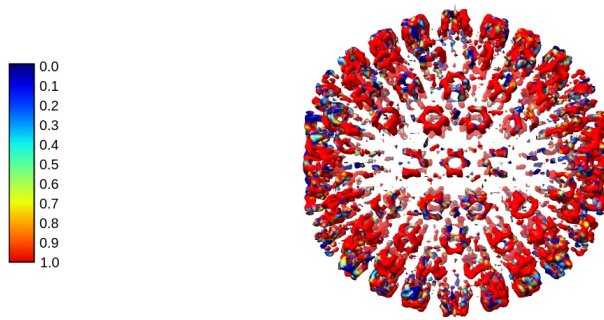
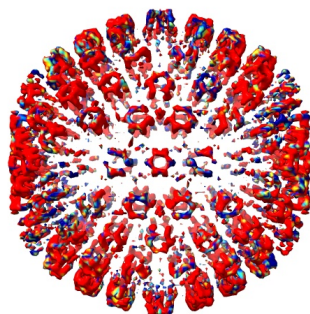
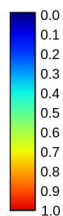


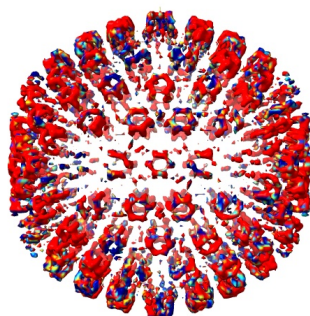
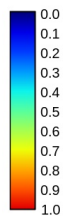
Figure 14: Histogram of the local occupancy according to LocOccupancy.



(a) View 1



(b) View 2



(c) View 3

Figure 15: Local occupancy according to LocOccupancy. Views generated by ChimeraX at the following X, Y, Z angles: View 1 (0, -90, -90), View 2 (-90, 0, -90), View 3 (0, 0, 0).

**Automatic criteria:** The validation is OK if the median occupancy is larger than 50%.

**STATUS:** [OK](#)

## 2.8 Level 0.h Hand correction

### **Explanation:**

Deep Hand (see this [link](#) for more details) determines the correction of the hand for those maps with a resolution smaller than 5Å. The method calculates a value between 0 (correct hand) and 1 (incorrect hand) using a neural network to assign its hand.

### **Results:**

This method cannot be applied to maps with a resolution worse than 5Å.

**STATUS:** Does not apply