



Public Data-based Report



Validation Report Service

Cryo-EM Map Validation Report

Report to assess Cryo-EM Volume Map at Level(s) 1, 0

This report has been generated based on data publicly available at [EMDB](#).

Basic Entry Information:

EMDB ID: [EMD-47764](#)

Title: Cdc45-GINS local refinement of yeast CMG G4 stall state 3

Authors: [See EMDB entry link](#)

Deposited on: 2024-11-07T00:00:00

Reported Resolution: 3.11 Å

Contact Us:

Instruct Image Processing Center ([I²PC](#))

Biocomputing Unit ([BCU](#))

i2pc@cnb.csic.es

[VRS Website](#)

National Center for Biotechnology (CNB)
St/ Darwin, 3 (Autonomous University of Madrid)
28049 Cantoblanco, Madrid (Spain)

Last update: **March 21, 2026, 4:01pm**

Context

Cryo-electron microscopy is currently one of the most active techniques in Structural Biology. The number of maps deposited at the [Electron Microscopy Data Bank](#) is rapidly growing every year and keeping the quality of the submitted maps is essential to maintain the scientific quality of the field. The ultimate quality measure is the consistency of the map and an atomic model. However, this is only possible for high resolution maps. Over the years there have been many suggestions about validation measures of 3DEM maps. Unfortunately, most of these measures are not currently in use for their spread in multiple software tools and the associated difficulty to access them. To alleviate this problem, we made available a validation grading system that evaluate the information provided to assess the map.

This system grades a map from 0 to 5 depending on the amount of information available. In this way, a map could be validated at Level 0 (the deposited map), 1 (two half maps), 2 (2D classes), 3 (particles), 4 (... + angular assignment), 5 (... + micrographs and coordinates). In addition, we can have three optional qualifiers: A (... + atomic model), W (... + image processing workflow), and O (... + other techniques). To know more about this service read this [paper](#)

This Validation Report Service uses Scipion (see this [link](#) for more detail) as workflow engine and ChimeraX (see this [link](#) for more detail) to generate the 3D views. For more information about the different methods and softwares used for this report, see the references [here](#).



Summarized overall quality

The map seems to have some problem in its centering or extra space (see Sec. 2.1). There seems to be a problem with the suggested threshold (see Sec. 2.2). There seems to be a problem with the map's background (see Sec. 2.3). The resolution does not seem to be uniform in all directions (see Sec. 4.6).

The average resolution of the map estimated by various methods goes from 2.3Å to 5.8Å with an average of 3.9Å. The resolution reported by the user was 3.1Å. The resolution reported may be overestimated.

The overall score (passing tests) of this report is 10 out of 16 evaluable items.

0.a Mass analysis	Sec. 2.1	1 warnings
0.b Mask analysis	Sec. 2.2	2 warnings
0.c Background analysis	Sec. 2.3	2 warnings
0.d B-factor analysis	Sec. 2.4	OK
0.e DeepRes	Sec. 2.5	OK
0.f LocBfactor	Sec. 2.6	OK
0.g LocOccupancy	Sec. 2.7	OK
0.h DeepHand	Sec. 2.8	OK
1.a Global resolution	Sec. 4.1	2 warnings
1.b FSC permutation	Sec. 4.2	OK
1.c Blocres	Sec. 4.3	OK
1.d Resmap	Sec. 4.4	1 warnings
1.e MonoRes	Sec. 4.5	OK
1.f MonoDir	Sec. 4.6	1 warnings
1.g FSO	Sec. 4.7	OK
1.h FSC3D	Sec. 4.8	OK

Summary of the warnings across sections.

Section 2.1 (0.a Mass analysis)

1. **The volume might be significantly decentered in X.**

Section 2.2 (0.b Mask analysis)

1. **There might be a problem of connectivity at this threshold because more than 5 connected components are needed to reach 95% of the total mask. Probably a smaller threshold will not cause this issue.**
2. **There might be a problem in the construction of the mask, because the overlap is smaller than 0.75. A common reason is that the suggested threshold causes too many disconnected components.**

Section 2.3 (0.c Background analysis)

1. **The null hypothesis that the background mean is 0 has been rejected because the p-value of the comparison is smaller than 0.001**
2. **There is a significant proportion of outlier values in the background (cdf5 ratio=11340.25)**

Section 4.1 (1.a Global resolution)

1. **The reported resolution, 3.11 Å, is particularly high with respect to the resolution calculated by the FSC, 4.44 Å**
2. **The reported resolution, 3.11 Å, is particularly high with respect to the resolution calculated by the SSNR, 5.79Å.**

Section 4.4 (1.d Resmap)

1. **The reported resolution, 3.11 Å, is particularly high with respect to the local resolution distribution. It occupies the 0.00 percentile**

Section 4.6 (1.f MonoDir)

1. **The distribution of best resolution is not uniform in all directions. The associated p-value is 0.000000.**

Contents

1	Input data	6
2	Level 0 analysis	13
2.1	Level 0.a Mass analysis	13
2.2	Level 0.b Mask analysis	14
2.3	Level 0.c Background analysis	19
2.4	Level 0.d B-factor analysis	21
2.5	Level 0.e Local resolution with DeepRes	23
2.6	Level 0.f Local B-factor	26
2.7	Level 0.g Local Occupancy	29
2.8	Level 0.h Hand correction	32
3	Half maps	33
4	Level 1 analysis	36
4.1	Level 1.a Global resolution	36
4.2	Level 1.b FSC permutation	39
4.3	Level 1.c Local resolution with Blocres	40
4.4	Level 1.d Local resolution with Resmap	43
4.5	Level 1.e Local resolution with MonoRes	46
4.6	Level 1.f Local and directional resolution with MonoDir	49
4.7	Level 1.g Fourier Shell Occupancy	52
4.8	Level 1.h Fourier Shell Correlation 3D	54

1 Input data

Input map: emd_47764.map

SHA256 hash: bd5956a385c682d87adf1f75470a81cd5fe1b5d61aaa57c31c26abae80a4d0f6

Voxel size: 0.826000 (Å)

Visualization threshold: 0.334000

Resolution estimated by user: 3.11

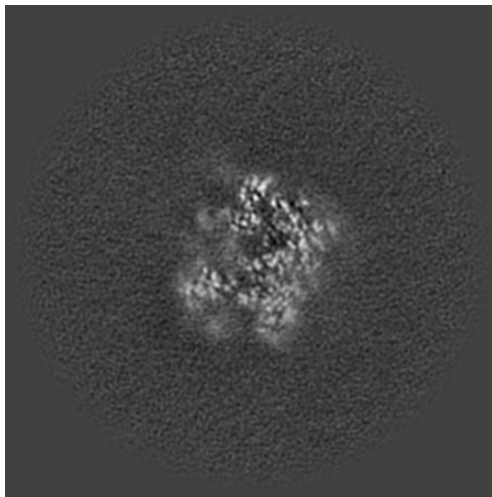
Orthogonal slices of the input map

Explanation:

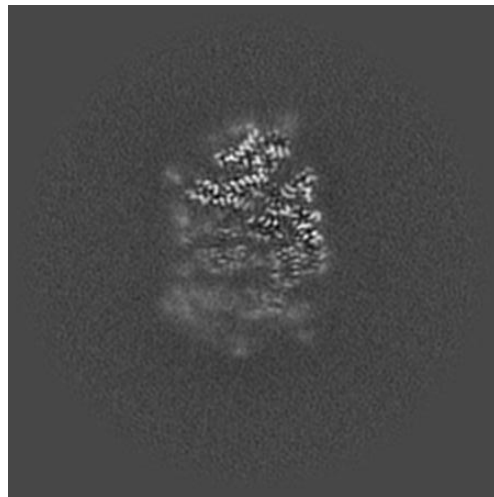
In the orthogonal slices of the map, the noise outside the protein should not have any structure (stripes going out, small blobs, particularly high or low densities, ...)

Results:

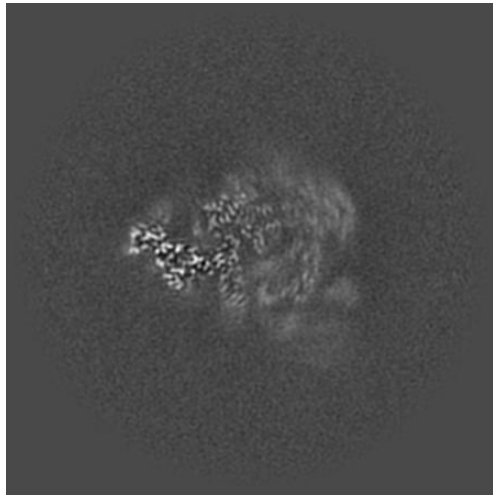
See Fig. 1.



(a) X Slice 224



(b) Y Slice 224



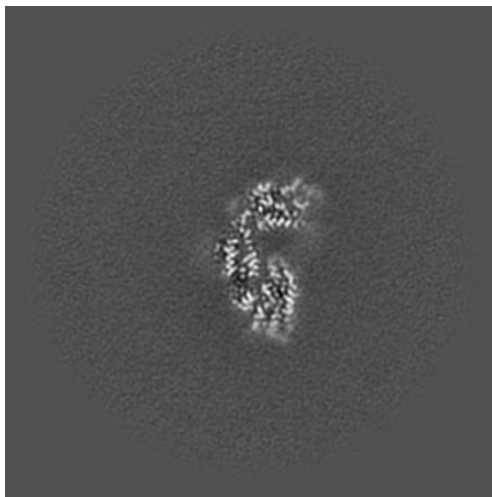
(c) Z Slice 224

Figure 1: Central slices of the input map in the three dimensions

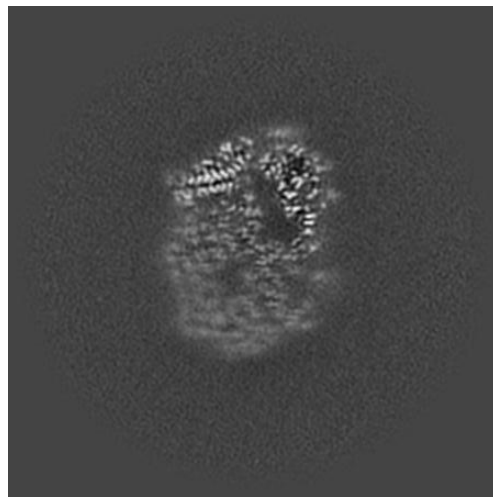
Orthogonal slices of maximum variance of the input map

Results:

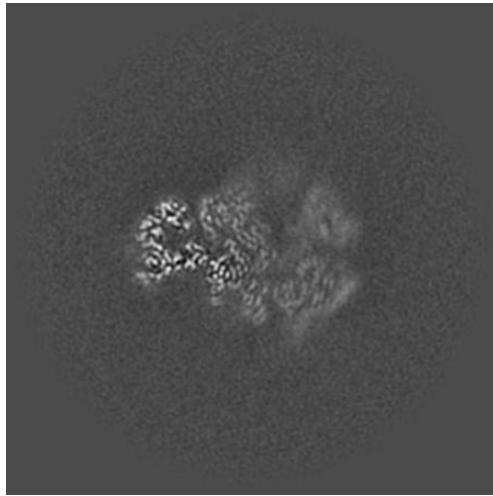
See Fig. 2.



(a) X Slice 161



(b) Y Slice 248



(c) Z Slice 199

Figure 2: Slices of maximum variation in the three dimensions

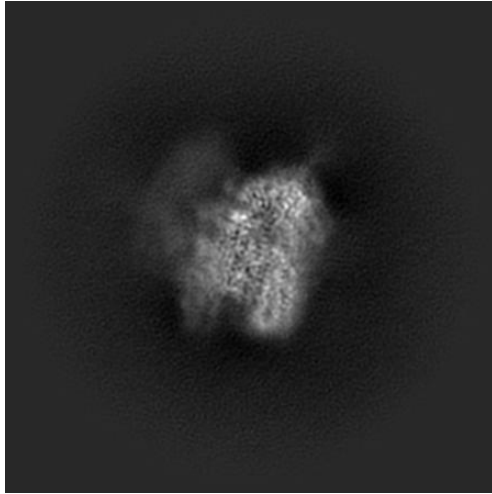
Orthogonal projections of the input map

Explanation:

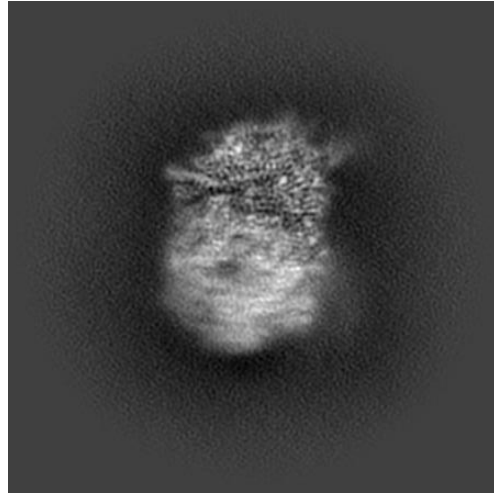
In the projections there should not be stripes (this is an indication of directional overweighting, or angular attraction), and there should not be a dark halo around or inside the structure (this is an indication of incorrect CTF correction or the reconstruction of a biased map).

Results:

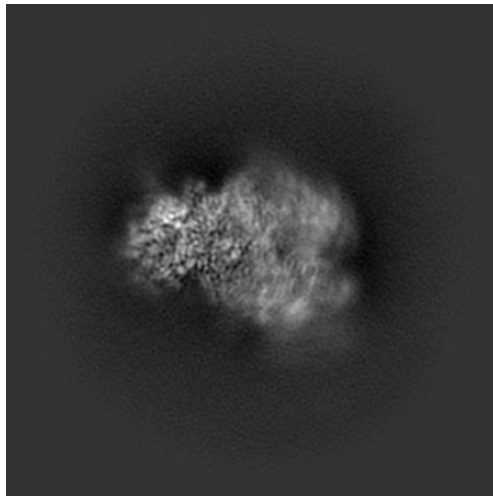
See Fig. 3.



(a) X Projection



(b) Y Projection



(c) Z Projection

Figure 3: Projections in the three dimensions

Isosurface views of the input map

Explanation:

An isosurface is the surface of all points that have the same gray value. In these views there should not be many artifacts or noise blobs around the map.

Results:
See Fig. 4.

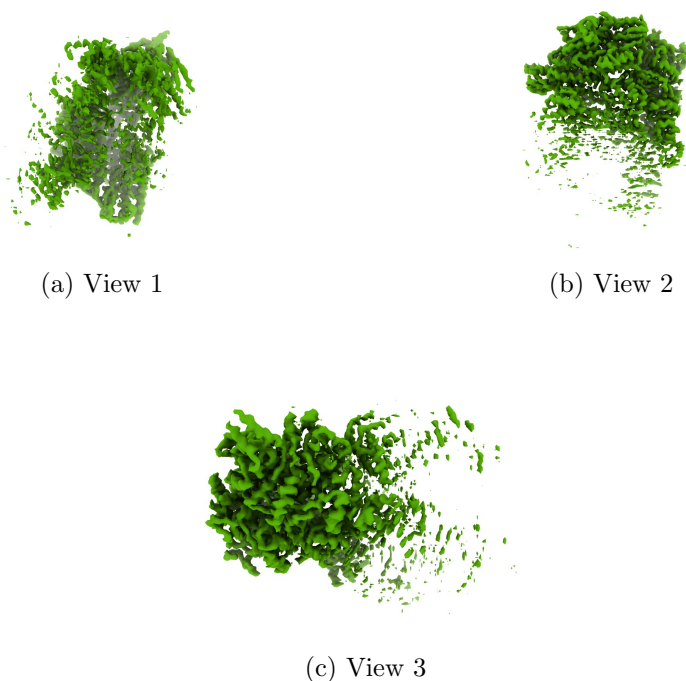


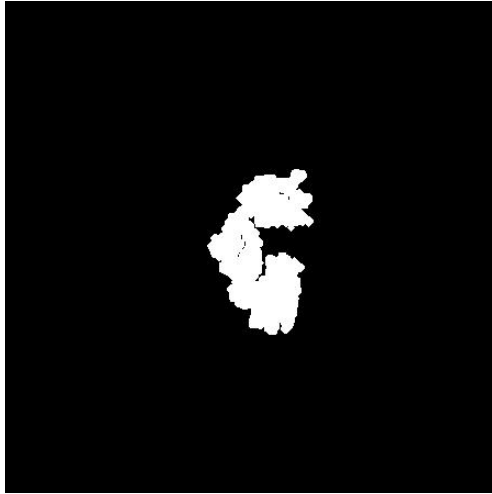
Figure 4: Isosurface at threshold=0.334000. Views generated by ChimeraX at a the following X, Y, Z angles: View 1 (0, -90, -90), View 2 (-90, 0, -90), View 3 (0, 0, 0).

Orthogonal slices of maximum variance of the mask with hard borders

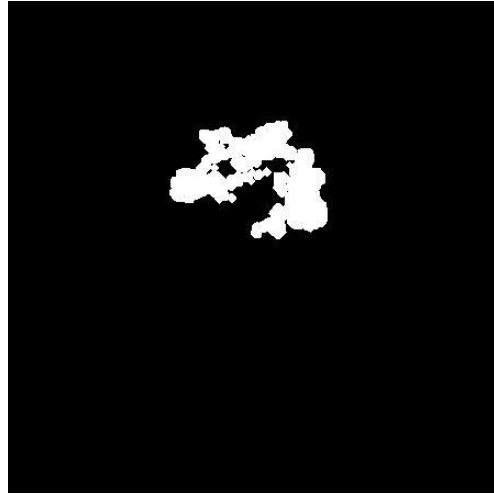
Explanation:

The mask with hard borders has been calculated at the suggested threshold 0.334000, the largest connected component was selected, and then dilated by 2Å.

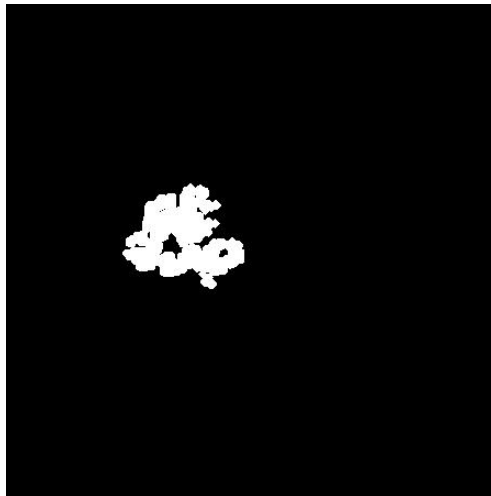
Results:
See Fig. 5.



(a) X Slice 160



(b) Y Slice 232



(c) Z Slice 251

Figure 5: Slices of maximum variation in the three dimensions of the mask with hard borders

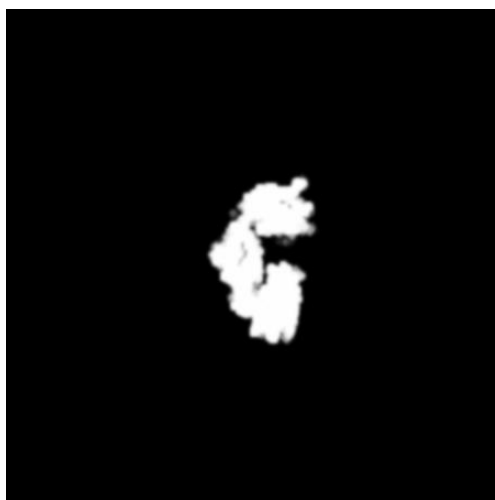
Orthogonal slices of maximum variance of the mask with soft borders

Explanation:

The mask with soft borders has been calculated at the suggested threshold 0.334000, the largest connected component was selected, and then dilated by

2Å.

Results:
See Fig. 6.



(a) X Slice 160



(b) Y Slice 231



(c) Z Slice 250

Figure 6: Slices of maximum variation in the three dimensions of the mask with soft borders

2 Level 0 analysis

2.1 Level 0.a Mass analysis

Explanation:

The reconstructed map must be relatively well centered in the box, and there should be at least 30\AA (the exact size depends on the CTF) on each side to make sure that the CTF can be appropriately corrected.

Results:

The space from the left and right in X are 87.56 and 188.33\AA , respectively. There is a decentering ratio $(\text{abs}(\text{Right-Left})/\text{Size})\%$ of 27.23%

The space from the left and right in Y are 144.55 and 130.51\AA , respectively. There is a decentering ratio $(\text{abs}(\text{Right-Left})/\text{Size})\%$ of 3.79%

The space from the left and right in Z are 118.12 and 114.81\AA , respectively. There is a decentering ratio $(\text{abs}(\text{Right-Left})/\text{Size})\%$ of 0.89%

The center of mass is at $(x,y,z)=(188.35,176.01,221.24)$. The decentering of the center of mass $(\text{abs}(\text{Center})/\text{Size})\%$ is 7.96, 10.71, and 0.62, respectively.

Automatic criteria: The validation is OK if 1) the decentering and center of mass less than 20% of the map dimensions in all directions, and 2) the extra space on each direction is more than 20% of the map dimensions. For local reconstruction, focused refinement, or similar, warnings are expected.

WARNINGS: 1 warnings

1. **The volume might be significantly decentered in X.**

2.2 Level 0.b Mask analysis

Explanation:

The map at the suggested threshold should have most of its mass concentrated in a single connected component. It is normal that after thresholding there are a few thousands of very small, disconnected noise blobs. However, their total mass should not exceed 10%. The raw mask (just thresholding) and the mask constructed for the analysis (thresholding + largest connected component + dilation) should significantly overlap. Overlap is defined by the overlapping coefficient $(\text{size}(\text{Raw AND Constructed})/\text{size}(\text{Raw}))$ that is a number between 0 and 1, the closer to 1, the more they agree.

Results:

Raw mask: At threshold 0.334000, there are 581 connected components with a total number of voxels of 132224 and a volume of 74516.13 \AA^3 (see Fig. 7). The size and percentage of the total number of voxels for the raw mask are listed below (up to 95% of the mass or the first 100 clusters, whatever happens first), the list contains (No. voxels (volume in \AA^3), percentage, cumulated percentage):

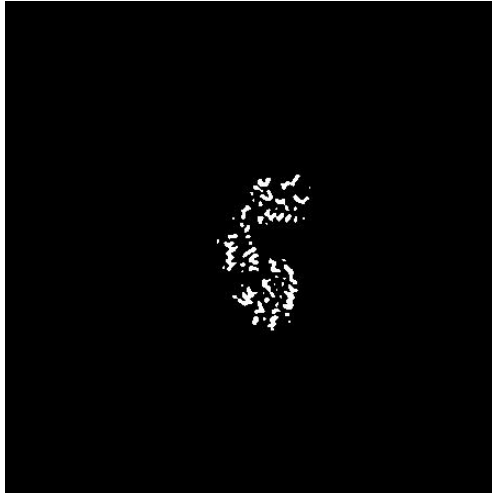
(95481 (53809.25), 72.21, 72.21)(4269 (2405.84), 3.23, 75.44)(4085 (2302.14), 3.09, 78.53)(3170 (1786.48), 2.40, 80.93)(2765 (1558.24), 2.09, 83.02)(1103

(621.61), 0.83, 83.85)(812 (457.61), 0.61, 84.47)(808 (455.36), 0.61, 85.08)(657 (370.26), 0.50, 85.57)(535 (301.50), 0.40, 85.98)(460 (259.24), 0.35, 86.33)(434 (244.58), 0.33, 86.66)(415 (233.88), 0.31, 86.97)(372 (209.64), 0.28, 87.25)(360 (202.88), 0.27, 87.52)(320 (180.34), 0.24, 87.76)(305 (171.89), 0.23, 88.00)(301 (169.63), 0.23, 88.22)(276 (155.54), 0.21, 88.43)(268 (151.03), 0.20, 88.63)(263 (148.22), 0.20, 88.83)(254 (143.14), 0.19, 89.03)(251 (141.45), 0.19, 89.22)(249 (140.33), 0.19, 89.40)(247 (139.20), 0.19, 89.59)(235 (132.44), 0.18, 89.77)(234 (131.87), 0.18, 89.95)(234 (131.87), 0.18, 90.12)(233 (131.31), 0.18, 90.30)(224 (126.24), 0.17, 90.47)(215 (121.17), 0.16, 90.63)(204 (114.97), 0.15, 90.78)(203 (114.40), 0.15, 90.94)(201 (113.28), 0.15, 91.09)(194 (109.33), 0.15, 91.24)(185 (104.26), 0.14, 91.38)(182 (102.57), 0.14, 91.51)(176 (99.19), 0.13, 91.65)(168 (94.68), 0.13, 91.77)(149 (83.97), 0.11, 91.89)(133 (74.95), 0.10, 91.99)(124 (69.88), 0.09, 92.08)(124 (69.88), 0.09, 92.18)(123 (69.32), 0.09, 92.27)(120 (67.63), 0.09, 92.36)(118 (66.50), 0.09, 92.45)(117 (65.94), 0.09, 92.54)(116 (65.37), 0.09, 92.62)(110 (61.99), 0.08, 92.71)(107 (60.30), 0.08, 92.79)(105 (59.17), 0.08, 92.87)(99 (55.79), 0.07, 92.94)(98 (55.23), 0.07, 93.02)(97 (54.67), 0.07, 93.09)(94 (52.97), 0.07, 93.16)(93 (52.41), 0.07, 93.23)(91 (51.28), 0.07, 93.30)(91 (51.28), 0.07, 93.37)(89 (50.16), 0.07, 93.44)(88 (49.59), 0.07, 93.50)(86 (48.47), 0.07, 93.57)(85 (47.90), 0.06, 93.63)(84 (47.34), 0.06, 93.70)(84 (47.34), 0.06, 93.76)(84 (47.34), 0.06, 93.82)(83 (46.78), 0.06, 93.89)(79 (44.52), 0.06, 93.95)(76 (42.83), 0.06, 94.00)(76 (42.83), 0.06, 94.06)(76 (42.83), 0.06, 94.12)(76 (42.83), 0.06, 94.18)(75 (42.27), 0.06, 94.23)(75 (42.27), 0.06, 94.29)(74 (41.70), 0.06, 94.35)(73 (41.14), 0.06, 94.40)(72 (40.58), 0.05, 94.45)(72 (40.58), 0.05, 94.51)(68 (38.32), 0.05, 94.56)(68 (38.32), 0.05, 94.61)(67 (37.76), 0.05, 94.66)(67 (37.76), 0.05, 94.71)(65 (36.63), 0.05, 94.76)(64 (36.07), 0.05, 94.81)(63 (35.50), 0.05, 94.86)(61 (34.38), 0.05, 94.90)(60 (33.81), 0.05, 94.95)(60 (33.81), 0.05, 95.00)(60 (33.81), 0.05, 95.04)

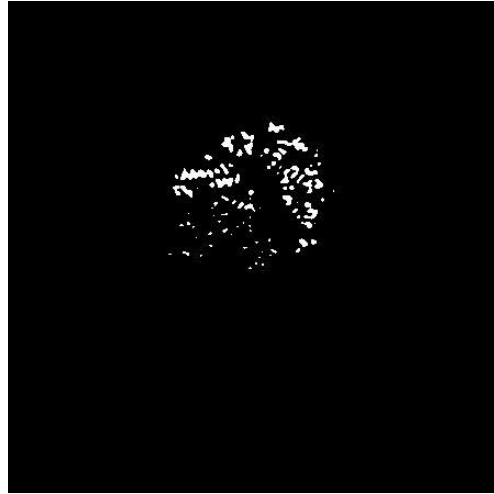
Number of components to reach 95% of the mass: 88

The average size of the remaining 493 components is 13.30 voxels (0.56 Å³). Their size go from 60 voxels (33.81 Å³) to 1 voxels (0.56 Å³).

The slices of the raw mask can be seen in Fig. 7.



(a) X Slice 161



(b) Y Slice 246



(c) Z Slice 264

Figure 7: Maximum variance slices in the three dimensions of the raw mask

The following table shows the variation of the mass enclosed at different thresholds (see Fig. 8):

Threshold	Voxel mass	Molecular mass(kDa)	# Aminoacids
0.0479	2300768.00	1074.25	9765.91
0.0957	1119904.00	522.89	4753.58
0.1436	689109.00	321.75	2925.01
0.1914	431480.00	201.46	1831.47
0.2393	276980.00	129.32	1175.68
0.2872	185857.00	86.78	788.89
0.3350	131299.00	61.30	557.32
0.3829	96983.00	45.28	411.66
0.4308	73320.00	34.23	311.22
0.4786	55825.00	26.07	236.96
0.5265	42087.00	19.65	178.64
0.5743	31406.00	14.66	133.31
0.6222	22564.00	10.54	95.78
0.6701	15481.00	7.23	65.71
0.7179	10228.00	4.78	43.41
0.7658	6246.00	2.92	26.51
0.8136	3516.00	1.64	14.92
0.8615	1777.00	0.83	7.54
0.9094	773.00	0.36	3.28
0.9572	307.00	0.14	1.30
1.0051	119.00	0.06	0.51
1.0529	34.00	0.02	0.14
1.1008	8.00	0.00	0.03
1.1487	1.00	0.00	0.00

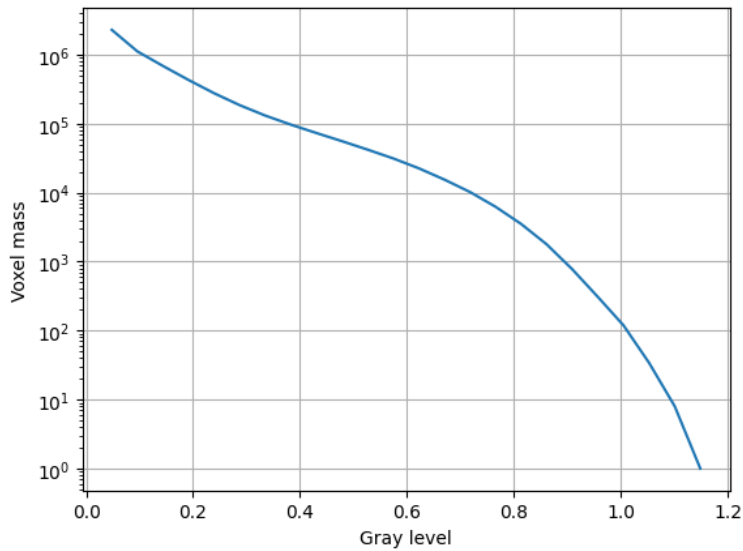


Figure 8: Voxel mass as a function of the gray level.

Constructed mask: After keeping the largest component of the previous mask and dilating it by 2\AA , there is a total number of voxels of 503419 and a volume of 283706.70\AA^3 . The overlap between the raw and constructed mask is 0.73.

Automatic criteria: The validation is OK if 1) to keep 95% of the mass we need to keep at most 5 connected components; and 2) the average volume of the blobs outside the given threshold has a size smaller than 5\AA^3 ; and 3) the overlap between the raw mask and the mask constructed for the analysis is larger than 75%.

WARNINGS: 2 warnings

1. **There might be a problem of connectivity at this threshold because more than 5 connected components are needed to reach 95% of the total mask. Probably a smaller threshold will not cause this issue.**
2. **There might be a problem in the construction of the mask, because the overlap is smaller than 0.75. A common reason is that the suggested threshold causes too many disconnected**

components.

2.3 Level 0.c Background analysis

Explanation:

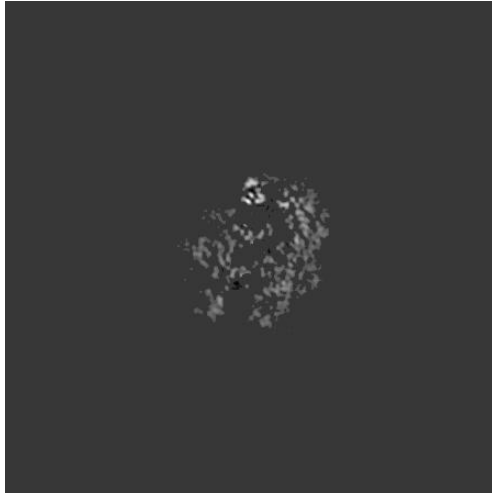
Background is defined as the region outside the macromolecule mask. The background mean should be zero, and the number of voxels with a very low or very high value (below 5 standard deviations of the noise) should be very small and they should be randomly distributed without any specific structure. Sometimes, you can see some structure due to the symmetry of the structure.

Results:

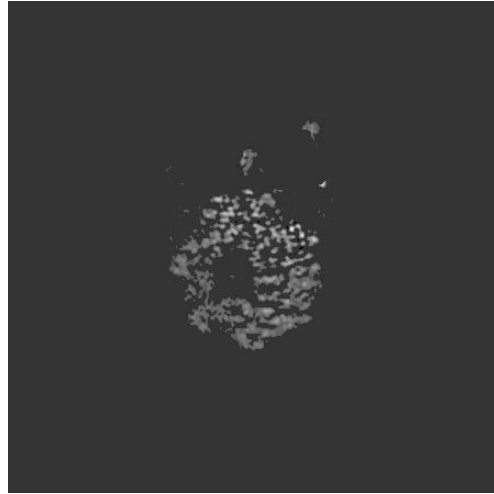
The null hypothesis that the background mean is 0 was tested with a one-sample Student's t-test. The resulting t-statistic and p-value were -173.37 and 0.000000, respectively.

The mean and standard deviation (sigma) of the background were -0.000470 and 0.025611. The percentage of background voxels whose absolute value is larger than 5 times the standard deviation is 0.65 % (see Fig. 9). The same percentage from a Gaussian would be 0.000057% (ratio between the two percentages: 11340.248273).

Slices of the background beyond 5*sigma can be seen in Fig. 9.



(a) X Slice 211



(b) Y Slice 260



(c) Z Slice 220

Figure 9: Maximum variance slices in the three dimensions of the parts of the background beyond $5 \cdot \sigma$

Automatic criteria: The validation is OK if 1) the p-value of the null hypothesis that the background has 0 mean is larger than 0.001; and 2) the number of voxels above or below 5 sigma is smaller than 20 times the amount

expected for a Gaussian with the same standard deviation whose mean is 0.

WARNINGS: 2 warnings

1. **The null hypothesis that the background mean is 0 has been rejected because the p-value of the comparison is smaller than 0.001**
2. **There is a significant proportion of outlier values in the background (cdf5 ratio=11340.25)**

2.4 Level 0.d B-factor analysis

Explanation:

The B-factor line (see this [link](#) for more details) fitted between 15Å and the resolution reported should have a slope that is between 0 and 300 Å².

Results:

Fig. 10 shows the logarithm (in natural units) of the structure factor (the module squared of the Fourier transform) of the experimental map, its fitted line, and the corrected map. The estimated B-factor was -90.1. The fitted line was $\log(|F|^2) = -22.5/R^2 + (-10.7)$.

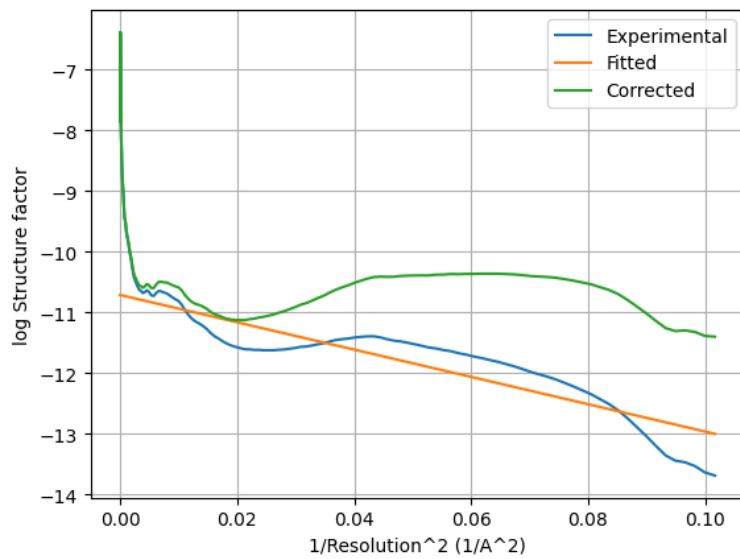
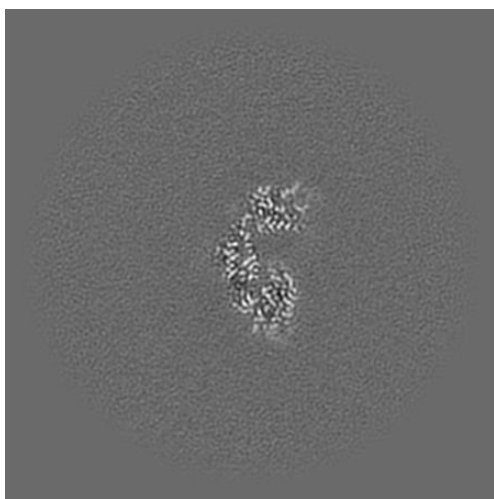
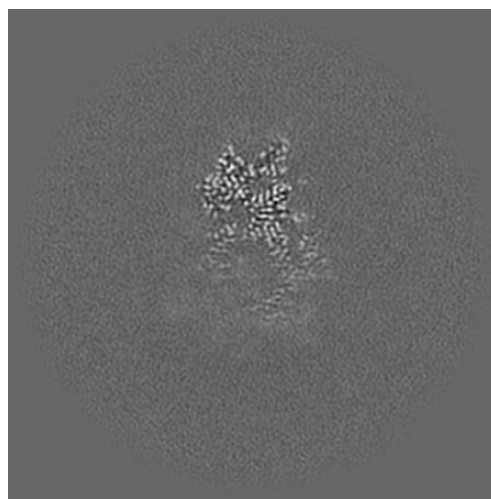


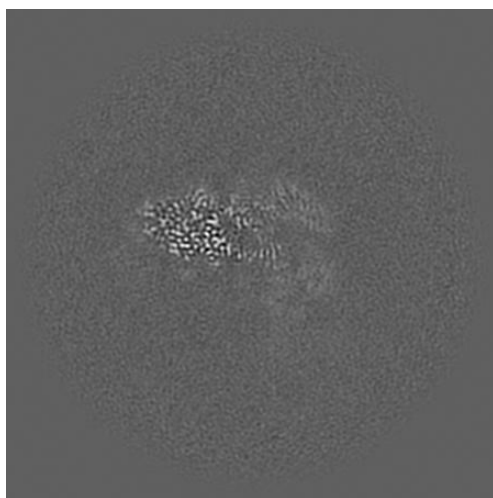
Figure 10: Guinier plot. The X-axis is the square of the inverse of the resolution in \AA .



(a) X Slice 161



(b) Y Slice 216



(c) Z Slice 263

Figure 11: Slices of maximum variation in the three dimensions of the B-factor corrected map

Automatic criteria: The validation is OK if the B-factor is in the range $[-300,0]$.

STATUS: OK

2.5 Level 0.e Local resolution with DeepRes

Explanation:

DeepRes (see this [link](#) for more details) measures the local resolution using a neural network that has been trained on the appearance of atomic structures at different resolutions. Then, by comparing the local appearance of the input map to the appearance of the atomic structures a local resolution label can be assigned.

Results:

Fig. 12 shows the histogram of the local resolution according to DeepRes. Some representative percentiles are:

Percentile	Resolution(\AA)
2.5%	3.52
25%	4.07
50%	4.37
75%	4.68
97.5%	5.30

The reported resolution, 3.11 \AA , is at the percentile 0.4. Fig. 13 shows some representative views of the local resolution.

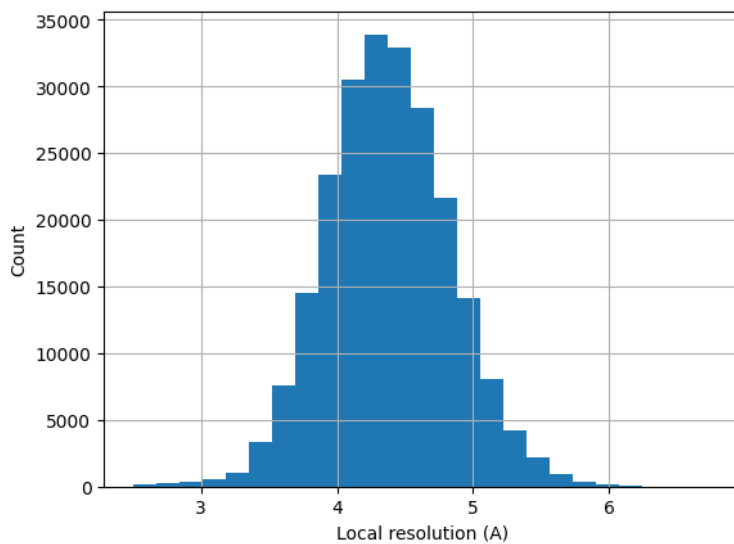
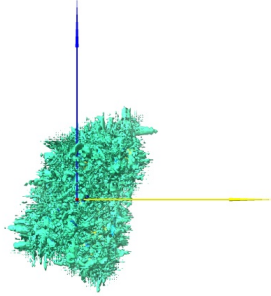
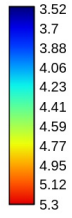
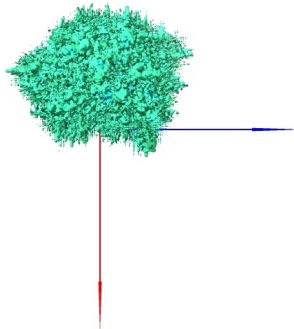
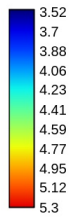


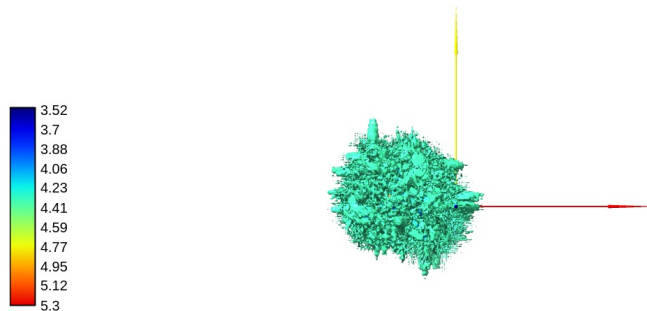
Figure 12: Histogram of the local resolution according to deepres.



(a) View 1



(b) View 2



(c) View 3

Figure 13: Local resolution according to DeepRes. Views generated by ChimeraX at a the following X, Y, Z angles: View 1 (0, -90, -90), View 2 (-90, 0, -90), View 3 (0, 0, 0).

Automatic criteria: The validation is OK if the percentile of the user provided resolution is larger than 0.1% of the percentile of the local resolution as estimated by DeepRes.

STATUS: OK

2.6 Level 0.f Local B-factor

Explanation:

LocBfactor (see this [link](#) for more details) estimates a local resolution B-factor by decomposing the input map into a local magnitude and phase term using the spiral transform.

Results:

Fig. 14 shows the histogram of the local B-factor according to LocBfactor. Some representative percentiles are:

Percentile	Local B-factor (\AA^{-2})
2.5%	-296.47
25%	-259.47
50%	-241.92
75%	-225.36
97.5%	-194.67

Fig. 15 shows some representative views of the local B-factor.

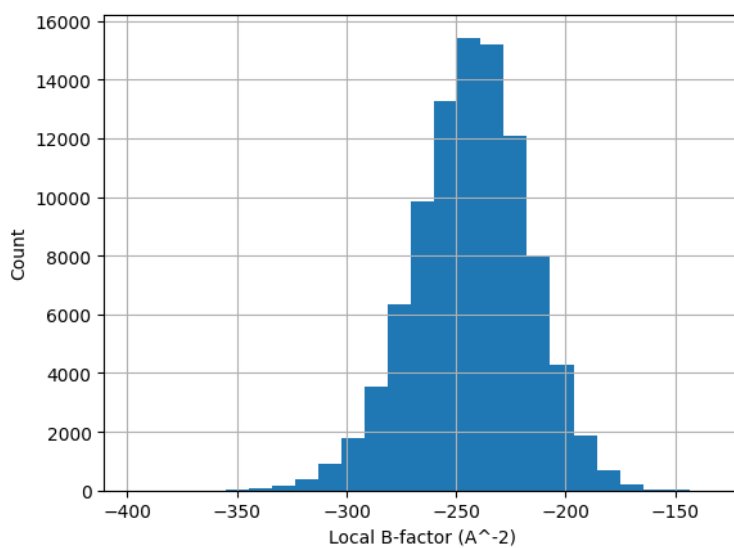
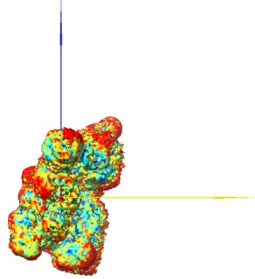
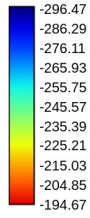
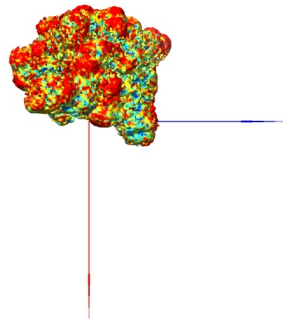
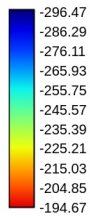


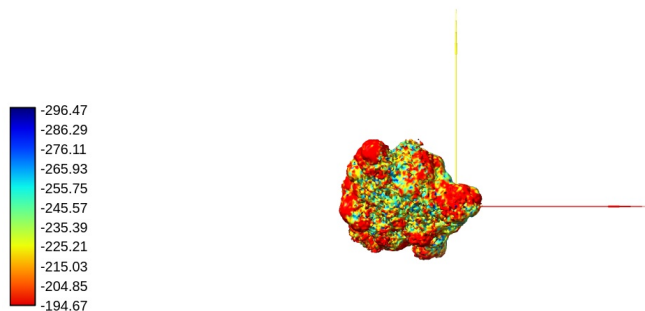
Figure 14: Histogram of the local B-factor according to LocBfactor.



(a) View 1



(b) View 2



(c) View 3

Figure 15: Local B-factor according to LocBfactor. Views generated by ChimeraX at a the following X, Y, Z angles: View 1 (0, -90, -90), View 2 (-90, 0, -90), View 3 (0, 0, 0).

Automatic criteria: The validation is OK if the median B-factor is in the range [-300,0].

STATUS: OK

2.7 Level 0.g Local Occupancy

Explanation:

LocOccupancy (see this [link](#) for more details) estimates the occupancy of a voxel by the macromolecule.

Results:

Fig. 16 shows the histogram of the local occupancy according to LocOccupancy. Some representative percentiles are:

Percentile	Local Occupancy [0-1]
2.5%	0.16
25%	0.63
50%	0.84
75%	0.95
97.5%	1.00

Fig. 17 shows some representative views of the local occupancy.

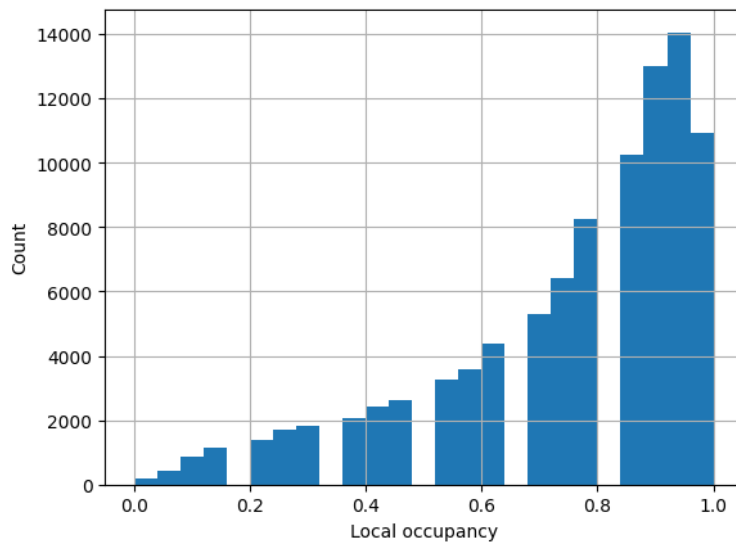
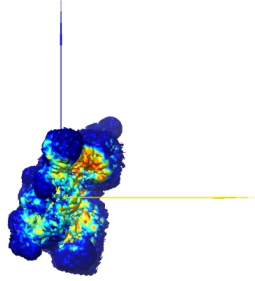
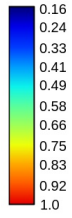
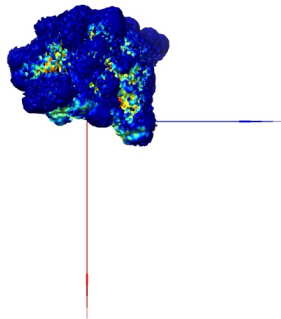
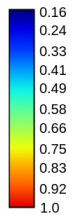


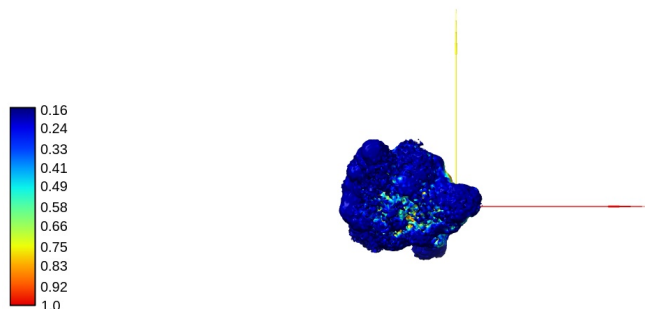
Figure 16: Histogram of the local occupancy according to LocOccupancy.



(a) View 1



(b) View 2



(c) View 3

Figure 17: Local occupancy according to LocOccupancy. Views generated by ChimeraX at a the following X, Y, Z angles: View 1 (0, -90, -90), View 2 (-90, 0, -90), View 3 (0, 0, 0).

Automatic criteria: The validation is OK if the median occupancy is larger than 50%.

STATUS: OK

2.8 Level 0.h Hand correction

Explanation:

Deep Hand (see this [link](#) for more details) determines the correction of the hand for those maps with a resolution smaller than 5\AA . The method calculates a value between 0 (correct hand) and 1 (incorrect hand) using a neural network to assign its hand.

Results:

Deep hand assigns a score of 0.181 to the input volume.

Automatic criteria: The validation is OK if the deep hand score is smaller than 0.5.

STATUS: [OK](#)

3 Half maps

Half map 1: emd_47764_half_map_1.map

SHA256 hash: 359930eacba7c263e5fc79caf97a2110fc0f66d25b9b0b6ccd7d62bff0b4408

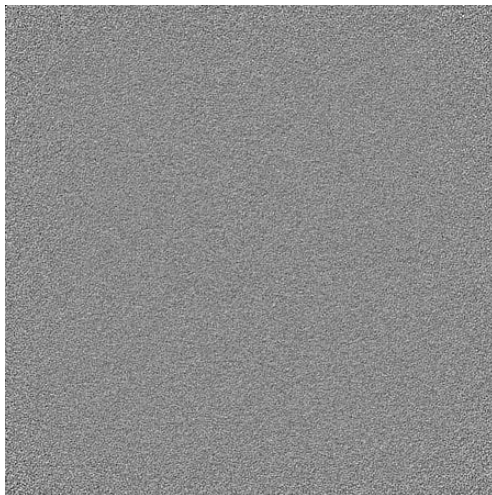
Half map 2: emd_47764_half_map_2.map

SHA256 hash: 229ccd4dce760b6183a94f86842044bb25e6426016679a376c36f507da0ff02

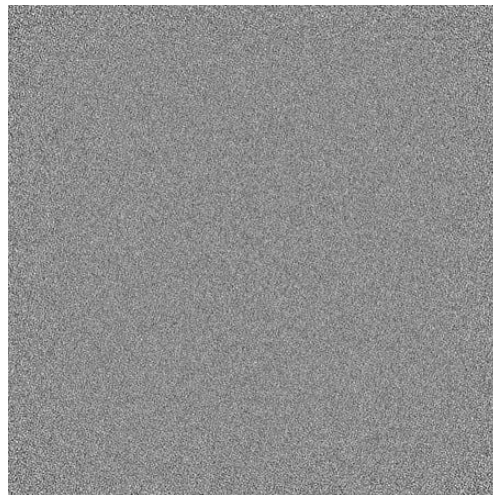
Slices of the first half map can be seen in [Fig. 18](#).

Slices of the second half map can be seen in [Fig. 19](#).

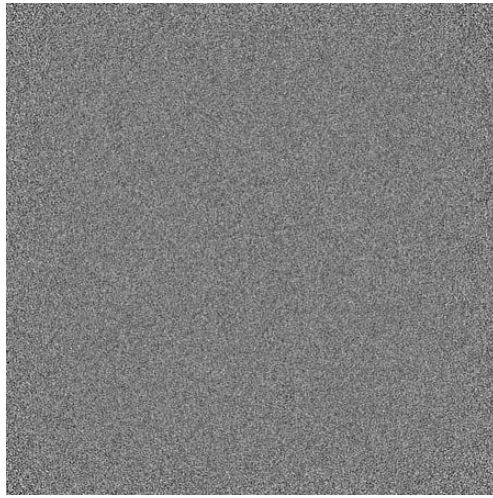
Slices of the difference between both maps can be seen in [Fig. 20](#). There should not be any structure in this difference. Sometimes some patterns are seen if the map is symmetric.



(a) X Slice 0

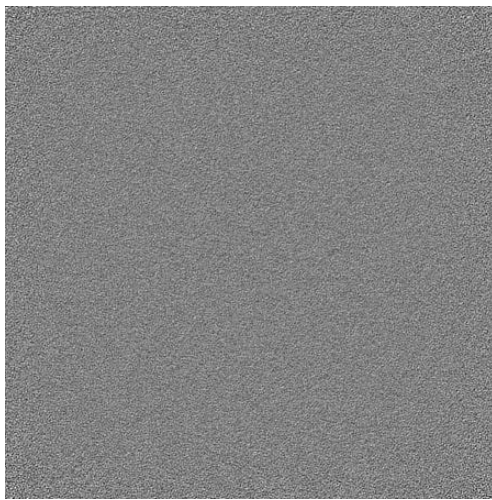


(b) Y Slice 0

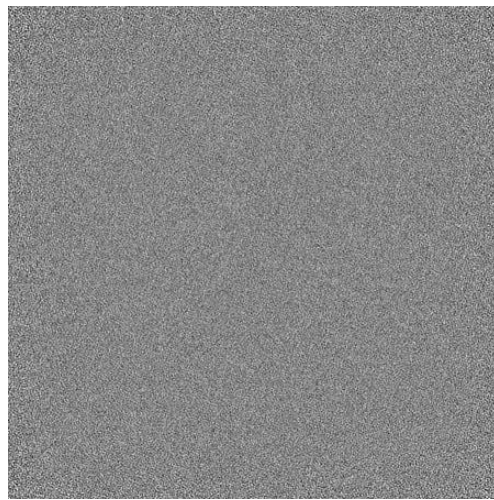


(c) Z Slice 0

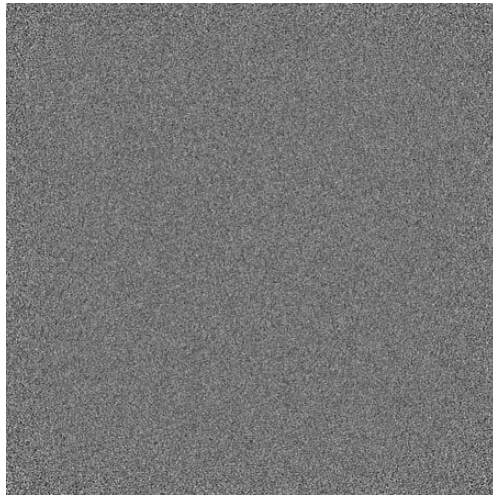
Figure 18: Slices of maximum variation in the three dimensions of Half 1



(a) X Slice 0

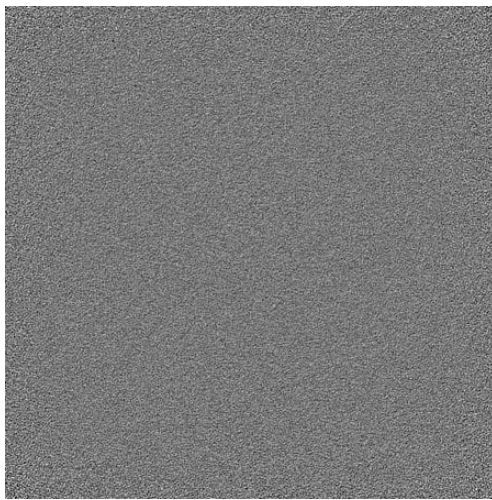


(b) Y Slice 0

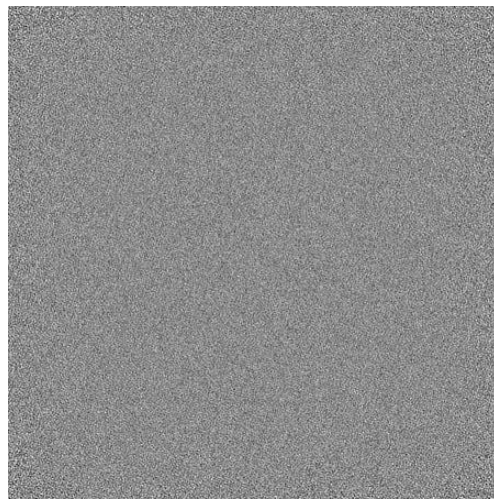


(c) Z Slice 0

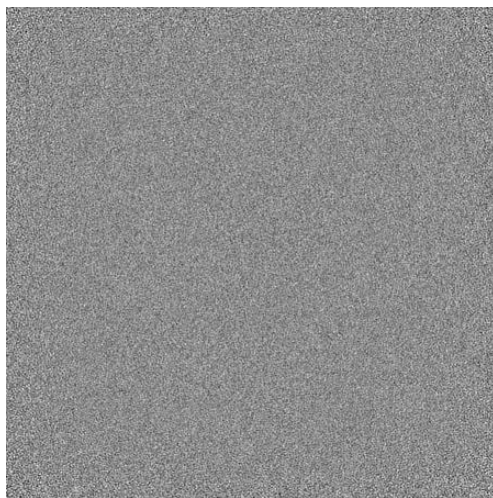
Figure 19: Slices of maximum variation in the three dimensions of Half 2



(a) X Slice 0



(b) Y Slice 0



(c) Z Slice 0

Figure 20: Slices of maximum variation in the three dimensions of the difference Half1-Half2.

4 Level 1 analysis

4.1 Level 1.a Global resolution

Explanation: The Fourier Shell Correlation (FSC) between the two half maps is the most standard method to determine the global resolution of a map. However, other measures exist such as the Spectral Signal-to-Noise Ratio and the Differential Phase Residual. There is a long debate about the right thresholds for these measures. Probably, the most clear threshold is the one of the SSNR (SSNR=1). For the DPR we have chosen 103.9° and for the FSC, the standard 0.143. For a deep discussion of all these thresholds, see this [link](#). Note that these thresholds typically result in resolution values that are at the lower extreme of the local resolution range, meaning that this resolution is normally in the first quarter. It should not be understood as the average resolution of the map.

Except for the noise, the FSC and DPR should be approximately monotonic. They should not have any “coming back” behavior. If they have, this is typically due to the presence of a mask in real space or non-linear process-

ing.

Results:

Fig. 21 shows the FSC and the 0.143 threshold. The resolution according to the FSC is 4.44Å. The map information is well preserved (FSC>0.9) up to 20.21Å.

Fig. 22 shows the DPR and the 103.9° threshold. The resolution according to the DPR is 3.77Å.

Fig. 23 shows the SSNR and the SSNR=1 threshold. The resolution according to the SSNR is 5.79Å.

The mean resolution between the three methods is 4.67Å and its range is within the interval [3.77, 5.79]Å.

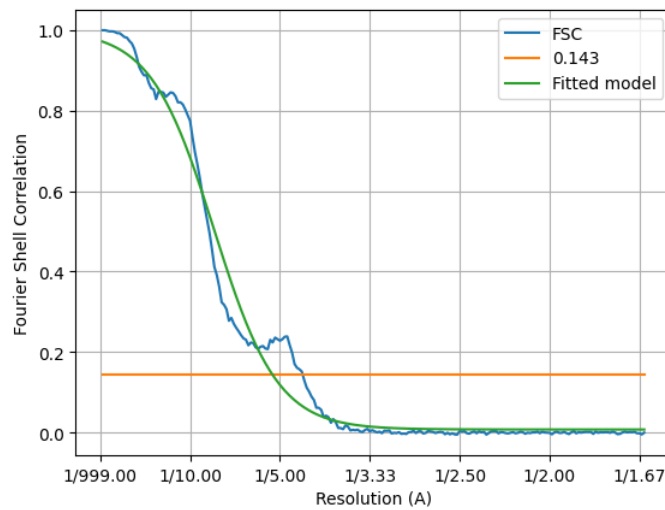


Figure 21: Fourier Shell correlation between the two halves.

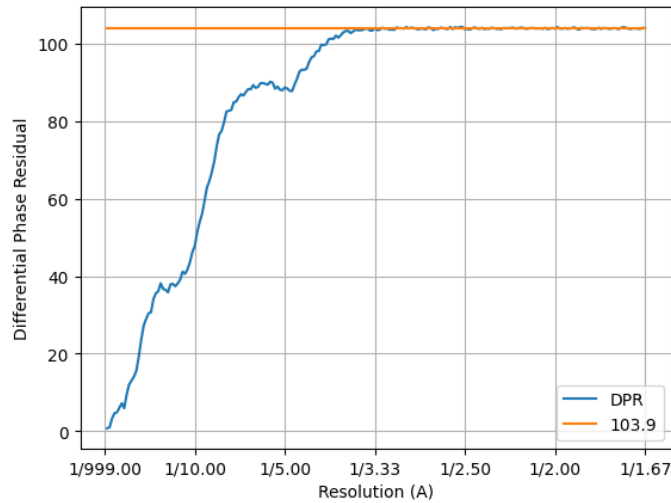


Figure 22: Differential Phase Residual between the two halves.

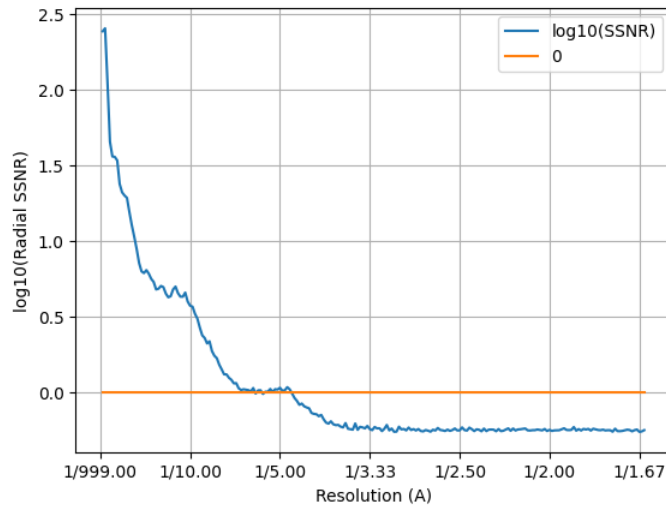


Figure 23: Spectral Signal-to-Noise Ratio estimated from the two halves.

Automatic criteria: The validation is OK if the user provided resolution is larger than 0.8 times the resolution estimated by 1) FSC, 2) DPR, and 3) SSNR.

WARNINGS: 2 warnings

1. **The reported resolution, 3.11 Å, is particularly high with respect to the resolution calculated by the FSC, 4.44 Å**
2. **The reported resolution, 3.11 Å, is particularly high with respect to the resolution calculated by the SSNR, 5.79Å.**

4.2 Level 1.b FSC permutation

Explanation:

This method (see this [link](#) for more details) calculates a global resolution by formulating a hypothesis test in which the distribution of the FSC of noise is calculated from the two maps.

Results:

The resolution at 1% of FDR was 3.4. The estimated B-factor was -52.76
Fig. 24 shows the estimated FSC and resolution.

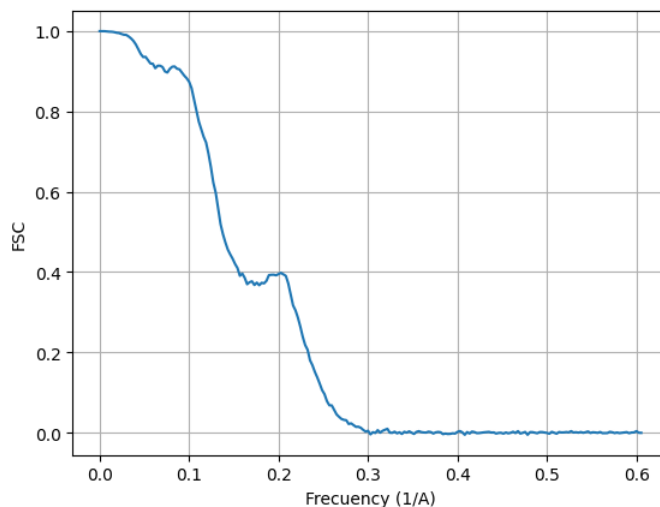


Figure 24: FSC and resolution estimated by a permutation test.

Automatic criteria: The validation is OK if the user provided resolution is larger than 0.8 times the resolution estimated by FSC permutation.

STATUS: [OK](#)

4.3 Level 1.c Local resolution with Blocres

Explanation:

This method (see this [link](#) for more details) computes a local Fourier Shell Correlation (FSC) between the two half maps.

Results:

Fig. 25 shows the histogram of the local resolution according to Blocres. Some representative percentiles are:

Percentile	Resolution(Å)
2.5%	2.99
25%	3.18
50%	3.36
75%	3.73
97.5%	5.15

The reported resolution, 3.11 Å, is at the percentile 13.6. Fig. 26 shows some representative views of the local resolution.

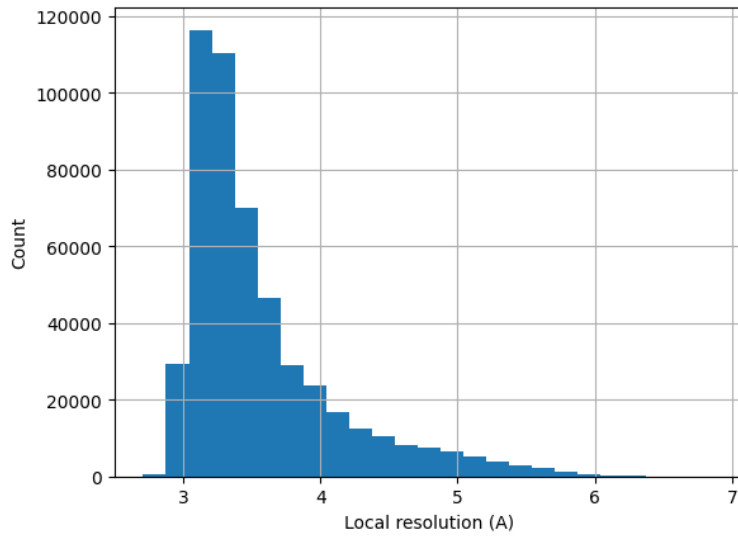
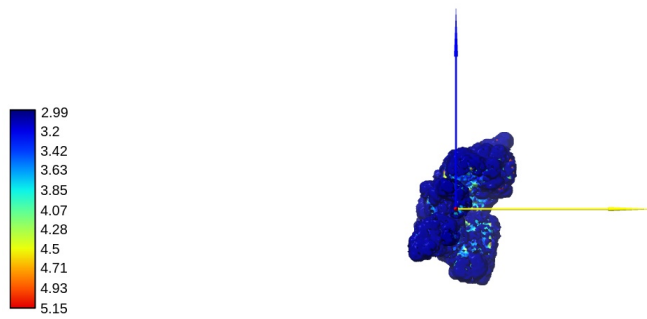
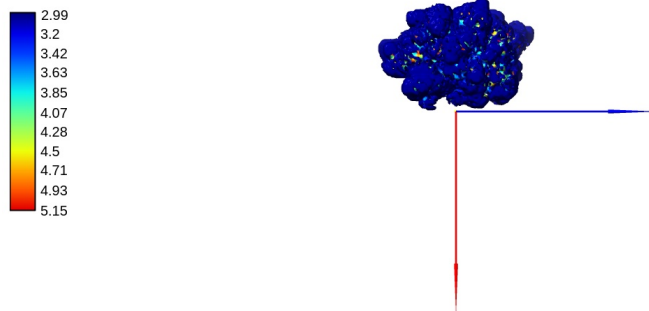


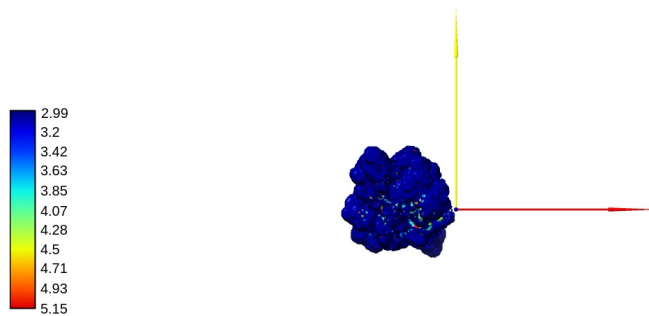
Figure 25: Histogram of the local resolution according to blocres.



(a) View 1



(b) View 2



(c) View 3

Figure 26: Local resolution according to Blocres. Views generated by ChimeraX at the following X, Y, Z angles: View 1 (0, -90, -90), View 2 (-90, 0, -90), View 3 (0, 0, 0).

Automatic criteria: The validation is OK if the percentile of the user provided resolution is larger than 0.1% of the percentile of the local resolution as estimated by BlocRes.

STATUS: [OK](#)

4.4 Level 1.d Local resolution with Resmap

Explanation:

This method (see this [link](#) for more details) is based on a test hypothesis testing of the superiority of signal over noise at different frequencies.

Results:

Fig. 27 shows the histogram of the local resolution according to Resmap. Some representative percentiles are:

Percentile	Resolution(Å)
2.5%	3.56
25%	3.73
50%	3.77
75%	3.78
97.5%	3.79

The reported resolution, 3.11 Å, is at the percentile 0. Fig. 28 shows some representative views of the local resolution.

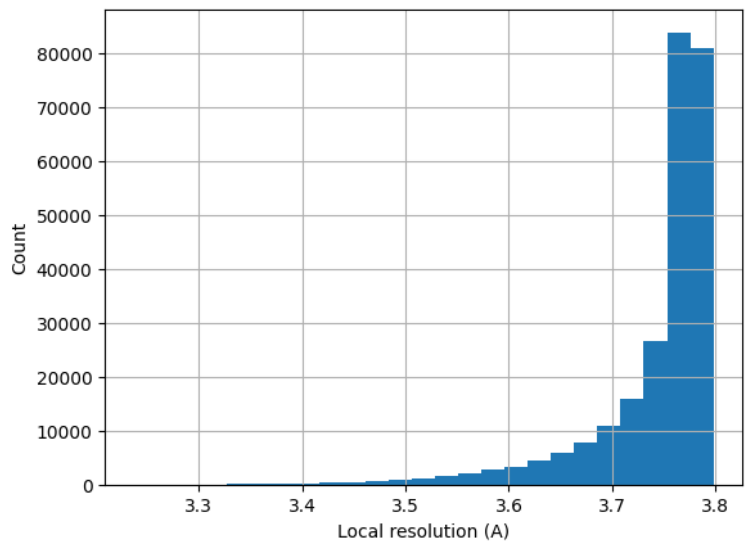
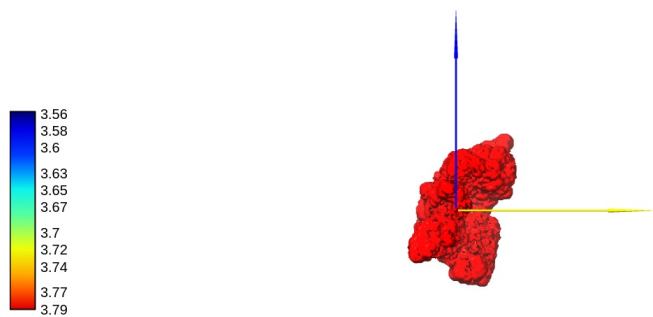


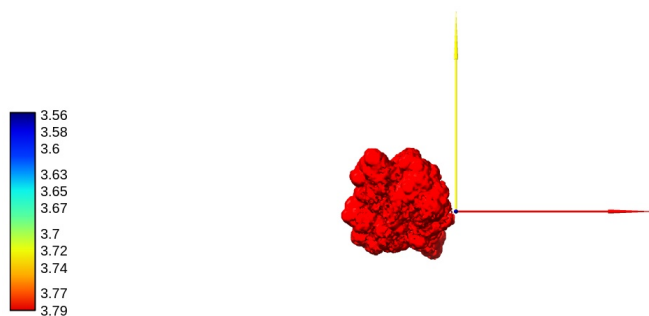
Figure 27: Histogram of the local resolution according to Resmap.



(a) View 1



(b) View 2



(c) View 3

Figure 28: Local resolution according to Resmap. Views generated by ChimeraX at the following X, Y, Z angles: View 1 (0, -90, -90), View 2 (-90, 0, -90), View 3 (0, 0, 0).

Automatic criteria: The validation is OK if the percentile of the user provided resolution is larger than 0.1% of the percentile of the local resolution as estimated by Resmap.

WARNINGS: 1 warnings

1. **The reported resolution, 3.11 Å, is particularly high with respect to the local resolution distribution. It occupies the 0.00 percentile**

4.5 Level 1.e Local resolution with MonoRes

Explanation:

MonoRes (see this [link](#) for more details) evaluates the local energy of a point with respect to the distribution of energy in the noise. This comparison is performed at multiple frequencies and for each one, the monogenic transformation separates the amplitude and phase of the input map. Then the energy of the amplitude within the map is compared to the amplitude distribution observed in the noise, and a hypothesis test is run for every voxel to check if its energy is significantly above the level of noise.

Results:

Fig. 29 shows the histogram of the local resolution according to MonoRes. Some representative percentiles are:

Percentile	Resolution(Å)
2.5%	2.99
25%	4.48
50%	5.13
75%	6.85
97.5%	9.23

The reported resolution, 3.11 Å, is at the percentile 3.1. Fig. 30 shows some representative views of the local resolution

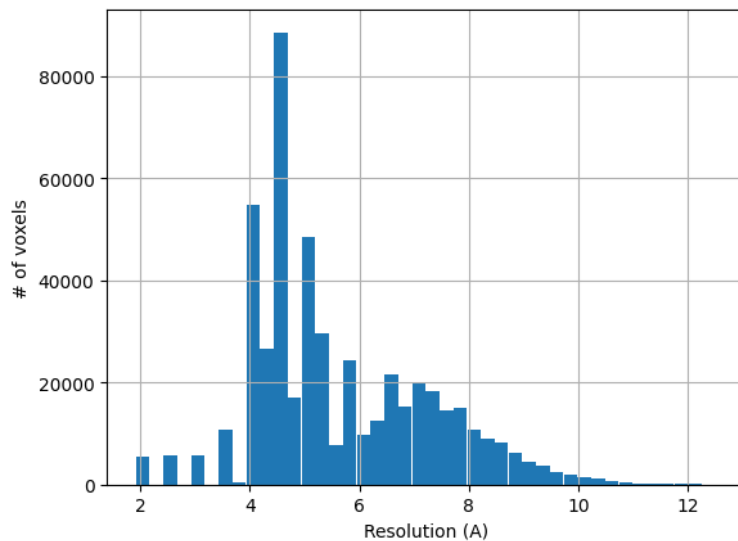
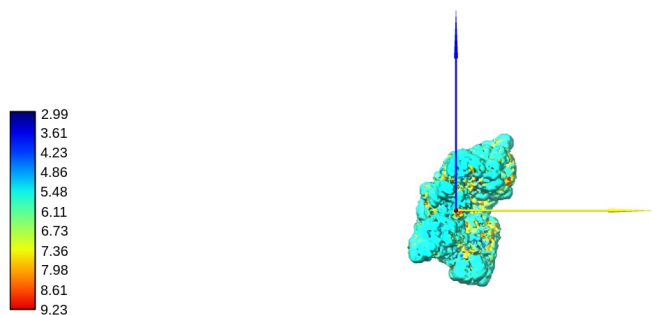
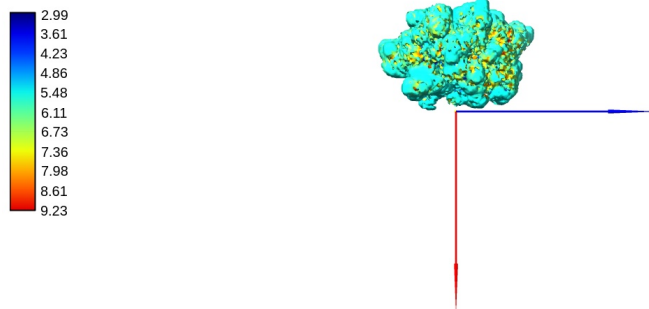


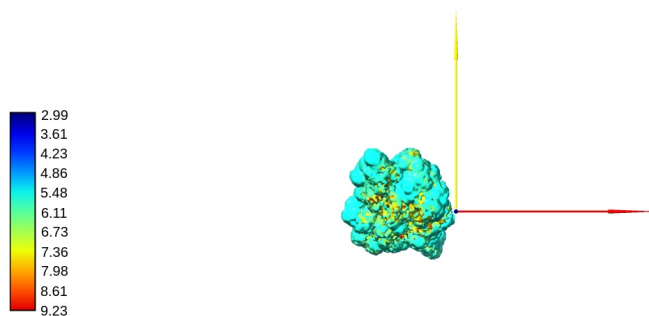
Figure 29: Histogram of the local resolution according to MonoRes.



(a) View 1



(b) View 2



(c) View 3

Figure 30: Local resolution according to Monores. Views generated by ChimeraX at the following X, Y, Z angles: View 1 (0, -90, -90), View 2 (-90, 0, -90), View 3 (0, 0, 0).

Automatic criteria: The validation is OK if the percentile of the user provided resolution is larger than 0.1% of the percentile of the local resolution as estimated by MonoRes.

STATUS: [OK](#)

4.6 Level 1.f Local and directional resolution with MonoDir

Explanation:

MonoDir (see this [link](#) for more details) extends the concept of local resolution to local and directional resolution by changing the shape of the filter applied to the input map. The directional analysis can reveal image alignment problems.

The histogram of best resolution voxels per direction (Directional Histogram 1D) shows how many voxels in the volume have their maximum resolution in that direction. Directions are arbitrarily numbered from 1 to N. This histogram should be relatively flat. We perform a Kolmogorov-Smirnov test to check its uniformity. If the null hypothesis is rejected, then the directional resolution is not uniform. It does not mean that it is wrong, and it could be caused by several reasons: 1) the angular distribution is not uniform, 2) there are missing directions, 3) there is some anisotropy in the data (including some preferential directional movement).

Ideally, the radial average of the minimum, maximum, and average resolution at each voxel (note that these are spatial radial averages) should be flat and as low as possible. If they show some slope, this is associated with inaccuracies in the angular assignment. These averages make sense when the shells are fully contained within the protein. As the shells approach the outside of the protein, these radial averages make less sense.

Results:

Fig. [31](#) shows the 1D directional histogram and Fig. [32](#) the 2D directional histogram. We compared the 1D directional histogram to a uniform distribution using a Kolmogorov-Smirnov test. The D statistic was 0.059897, and the p-value of the null hypothesis 0.000000.

The radial average of the minimum, maximum and average resolution at each voxel is shown in Fig. [33](#). The overall mean of the directional resolution is 3.72

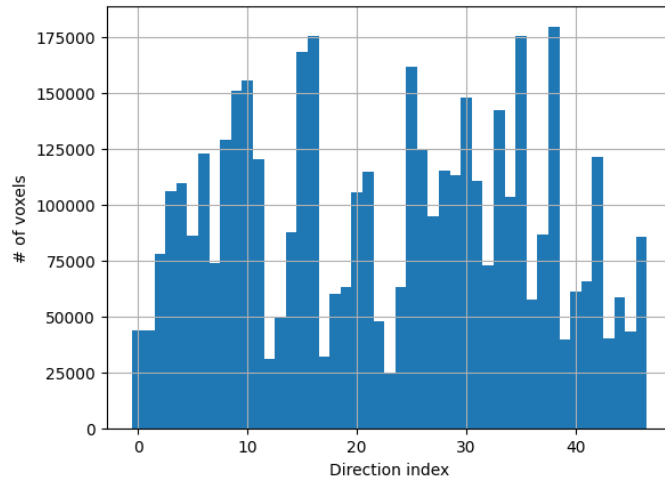


Figure 31: Histogram 1D of the best direction at each voxel.

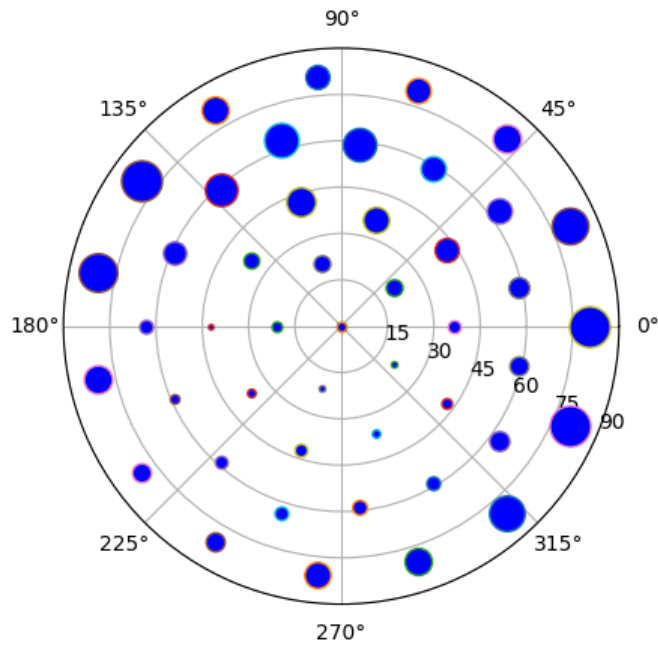


Figure 32: Histogram 2D of the best direction at each voxel. The azimuthal rotation is circular, while the tilt angle is the radius. The size of the point is proportional to the number of voxels whose maximum resolution is in that direction (this count can be seen in Fig. 31).

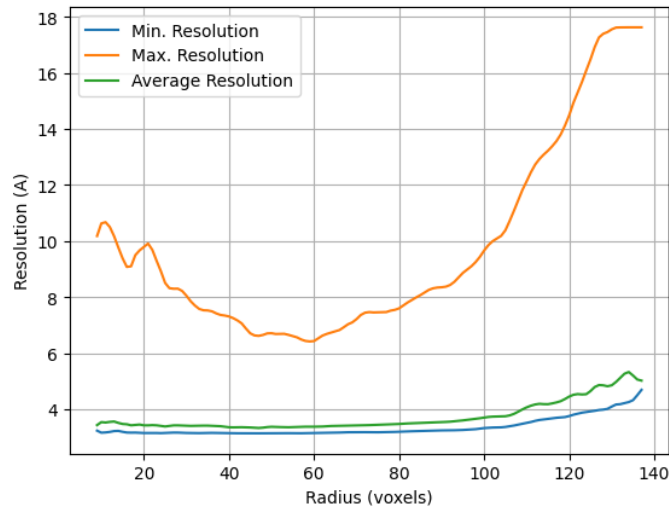


Figure 33: Radial averages (in space) of the minimum, maximum and average resolution at each voxel.

Automatic criteria: The validation is OK if 1) the null hypothesis that the directional resolution is not uniform is not rejected with a threshold of 0.001 for the p-value, and 2) the resolution provided by the user is not smaller than 0.8 times the average directional resolution.

WARNINGS: 1 warnings

1. **The distribution of best resolution is not uniform in all directions. The associated p-value is 0.000000.**

4.7 Level 1.g Fourier Shell Occupancy

Explanation:

This method (see this [link](#) for more details) calculates the anisotropy of the energy distribution in Fourier shells. This is an indirect measure of anisotropy of the angular distribution or the presence of heterogeneity. A natural threshold for this measure is 0.5. However, 0.9 and 0.1 are also interesting values that define the frequency at which the occupancy is 90% and 10%, respectively. This region is shaded in the plot.

Results:

Fig. 34 shows the Fourier Shell Occupancy and its anisotropy. The directional resolution is shown in Fig. 35. The resolution according to the FSO is 3.06\AA . Fourier shells are occupied at between 90 and than 10% in the range $[3.52, 2.83]\text{\AA}$.

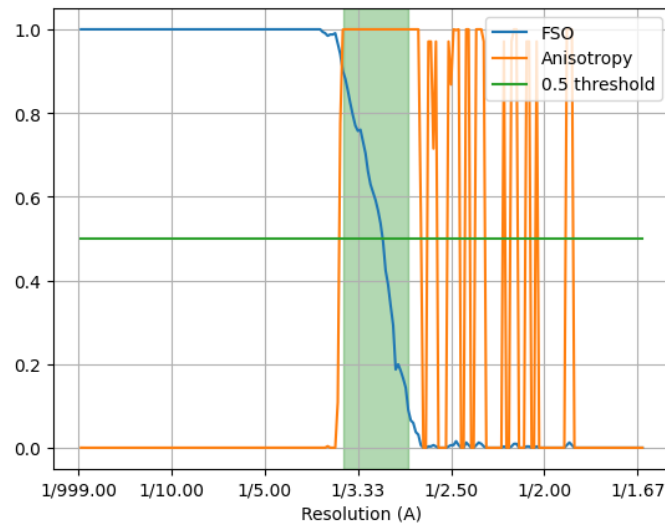


Figure 34: FSO and anisotropy.

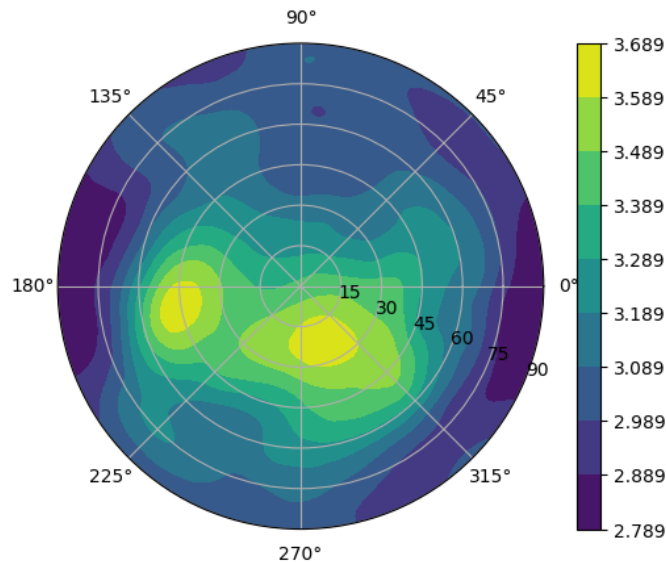


Figure 35: Directional resolution in the projection sphere.

Automatic criteria: The validation is OK if the resolution provided by the user is not smaller than 0.8 times the resolution estimated by the first cross of FSO below 0.5.

STATUS: OK

4.8 Level 1.h Fourier Shell Correlation 3D

Explanation:

This method (see this [link](#) for more details) analyzes the FSC in different directions and evaluates its homogeneity.

Results:

Fig. 36 shows the FSCs in X, Y, Z, and the global FSC. Fig. 37 shows the global FSC and the histogram of the directional FSC. Finally, Fig. 38 shows the rotational average of the map power in Fourier space. The FSC 3D resolutions at a 0.143 threshold in X, Y, and Z are 2.18, 2.25, and 2.49 Å, respectively. The global resolution at the same threshold is 2.28 Å. The resolution range is [2.18, 2.49]Å.

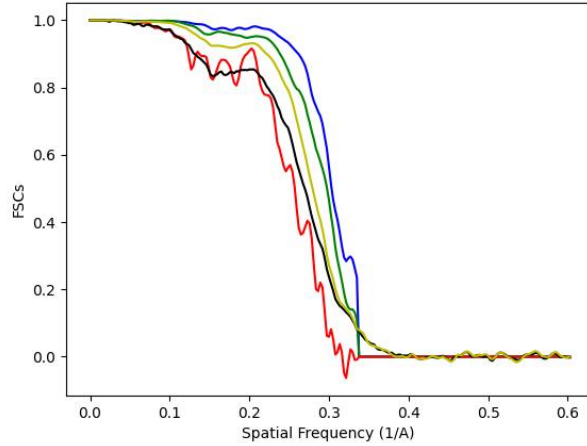


Figure 36: FSC in X, Y, Z, the global FSC, and the Average Cosine Phase.

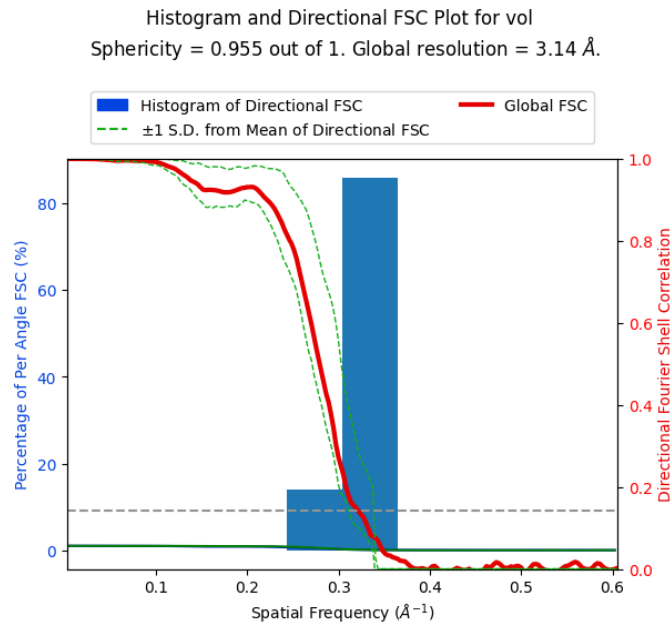


Figure 37: Global FSC and histogram of the directional FSC.

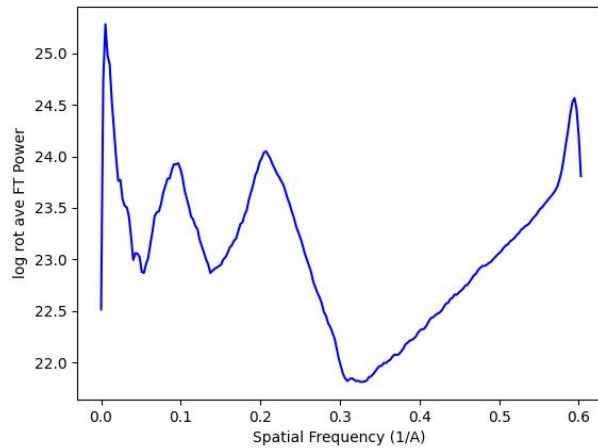


Figure 38: Logarithm of the radial average of the input map power in Fourier space.

Automatic criteria: The validation is OK if the resolution provided by the user is not smaller than 0.8 the resolution estimated by the first cross of the global directional FSC below 0.143.

STATUS: OK