



Public Data-based Report



# Validation Report Service

## Cryo-EM Map Validation Report

Report to assess Cryo-EM Volume Map at Level(s) 0, 1

---

This report has been generated based on data publicly available at [EMDB](#).

### Basic Entry Information:

**EMDB ID:** [EMD-72439](#)

**Title:** Structure of the Leishmania inner dyenin arm C motor domain

**Authors:** [See EMDB entry link](#)

**Deposited on:** 2025-09-02T00:00:00

**Reported Resolution:** 17.0 Å

---

### Contact Us:

Instruct Image Processing Center ([I<sup>2</sup>PC](#))

Biocomputing Unit ([BCU](#))

[i2pc@cnb.csic.es](mailto:i2pc@cnb.csic.es)

[VRS Website](#)

National Center for Biotechnology (CNB)  
St/ Darwin, 3 (Autonomous University of Madrid)  
28049 Cantoblanco, Madrid (Spain)

Last update: **April 13, 2026, 12:59am**

## Context

Cryo-electron microscopy is currently one of the most active techniques in Structural Biology. The number of maps deposited at the [Electron Microscopy Data Bank](#) is rapidly growing every year and keeping the quality of the submitted maps is essential to maintain the scientific quality of the field. The ultimate quality measure is the consistency of the map and an atomic model. However, this is only possible for high resolution maps. Over the years there have been many suggestions about validation measures of 3DEM maps. Unfortunately, most of these measures are not currently in use for their spread in multiple software tools and the associated difficulty to access them. To alleviate this problem, we made available a validation grading system that evaluate the information provided to assess the map.

This system grades a map from 0 to 5 depending on the amount of information available. In this way, a map could be validated at Level 0 (the deposited map), 1 (two half maps), 2 (2D classes), 3 (particles), 4 (... + angular assignment), 5 (... + micrographs and coordinates). In addition, we can have three optional qualifiers: A (... + atomic model), W (... + image processing workflow), and O (... + other techniques). To know more about this service read this [paper](#)

This Validation Report Service uses Scipion (see this [link](#) for more detail) as workflow engine and ChimeraX (see this [link](#) for more detail) to generate the 3D views. For more information about the different methods and softwares used for this report, see the references [here](#).



### Summarized overall quality

The map seems to have some problem in its centering or extra space (see Sec. 2.1). There is no problem with the suggested threshold. There seems to be a problem with the map's background (see Sec. 2.3). There seems to be a problem with its local B-factor (see Sec. 2.6).

The average resolution of the map estimated by various methods goes from 5.9Å to 33.2Å with an average of 13.2Å. The resolution reported by the user was 17.0Å.

**The overall score (passing tests) of this report is 8 out of 11 evaluable items.**

|                         |          |                       |
|-------------------------|----------|-----------------------|
| 0.a Mass analysis       | Sec. 2.1 | 4 warnings            |
| 0.b Mask analysis       | Sec. 2.2 | OK                    |
| 0.c Background analysis | Sec. 2.3 | 2 warnings            |
| 0.d B-factor analysis   | Sec. 2.4 | Does not apply        |
| 0.e DeepRes             | Sec. 2.5 | Does not apply        |
| 0.f LocBfactor          | Sec. 2.6 | 1 warnings            |
| 0.g LocOccupancy        | Sec. 2.7 | OK                    |
| 0.h Deep hand           | Sec. 2.8 | Does not apply        |
| 1.a Global resolution   | Sec. 4.1 | OK                    |
| 1.b FSC permutation     | Sec. 4.2 | OK                    |
| 1.c Blocres             | Sec. 4.3 | OK                    |
| 1.d Resmap              | Sec. 4.4 | OK                    |
| 1.e MonoRes             | Sec. 4.5 | OK                    |
| 1.f MonoDir             | Sec. 4.6 | Does not apply        |
| 1.g FSO                 | Sec. 4.7 | OK                    |
| 1.h FSC3D               | Sec. 4.8 | Could not be measured |

### Summary of the warnings across sections.

#### Section 2.1 (0.a Mass analysis)

1. **The volume might be significantly decentered in X.**
2. **The volume might be significantly decentered in Y.**
3. **The center of mass in X may be significantly shifted. This is common when the refinement is applied exclusively to one protein region.**
4. **The center of mass in Y may be significantly shifted. This is common when the refinement is applied exclusively to one protein region.**

#### Section 2.3 (0.c Background analysis)

1. **The null hypothesis that the background mean is 0 has been rejected because the p-value of the comparison is smaller than 0.001**
2. **There is a significant proportion of outlier values in the background (cdf5 ratio=5124.33)**

#### Section 2.6 (0.f LocBfactor)

1. **The median B-factor is out of the interval [-300,0]**

# Contents

|          |   |           |
|----------|---|-----------|
| <b>1</b> | <b>Input data</b>   | <b>6</b>  |
| <b>2</b> | <b>Level 0 analysis</b>   | <b>13</b> |
| 2.1      | Level 0.a Mass analysis . . . . .                                 | 13        |
| 2.2      | Level 0.b Mask analysis . . . . .                                 | 14        |
| 2.3      | Level 0.c Background analysis . . . . .                           | 18        |
| 2.4      | Level 0.d B-factor analysis . . . . .                             | 20        |
| 2.5      | Level 0.e Local resolution with DeepRes . . . . .                 | 21        |
| 2.6      | Level 0.f Local B-factor . . . . .                                | 21        |
| 2.7      | Level 0.g Local Occupancy . . . . .                               | 24        |
| 2.8      | Level 0.h Hand correction . . . . .                               | 27        |
| <b>3</b> | <b>Half maps</b>  | <b>28</b> |
| <b>4</b> | <b>Level 1 analysis</b>   | <b>31</b> |
| 4.1      | Level 1.a Global resolution . . . . .                             | 31        |
| 4.2      | Level 1.b FSC permutation . . . . .                               | 34        |
| 4.3      | Level 1.c Local resolution with Blocres . . . . .                 | 35        |
| 4.4      | Level 1.d Local resolution with Resmap . . . . .                  | 37        |
| 4.5      | Level 1.e Local resolution with MonoRes . . . . .                 | 40        |
| 4.6      | Level 1.f Local and directional resolution with MonoDir . . . . . | 43        |
| 4.7      | Level 1.g Fourier Shell Occupancy . . . . .                       | 44        |
| 4.8      | Level 1.h Fourier Shell Correlation 3D . . . . .                  | 46        |

# 1 Input data

Input map: emd\_72439.map

SHA256 hash: 77bba63bbb0961046715fe323c0df994bfc67d19e1681ad0592201569d42e5bb

Voxel size: 1.330000 (Å)

Visualization threshold: 0.001290

Resolution estimated by user: 17.0

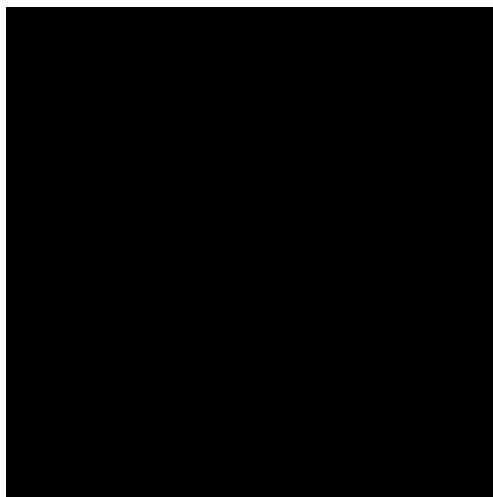
## Orthogonal slices of the input map

### **Explanation:**

In the orthogonal slices of the map, the noise outside the protein should not have any structure (stripes going out, small blobs, particularly high or low densities, ...)

### **Results:**

See Fig. 1.



(a) X Slice 330



(b) Y Slice 330



(c) Z Slice 330

Figure 1: Central slices of the input map in the three dimensions

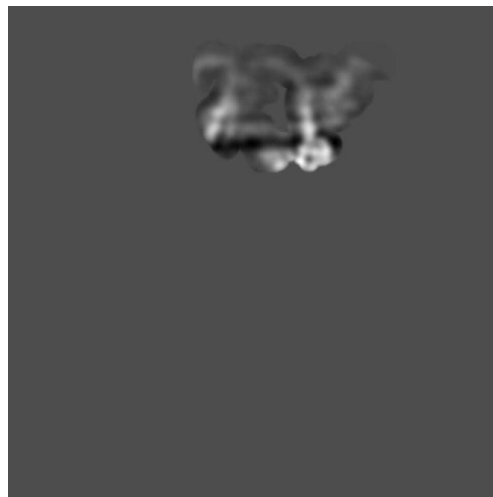
Orthogonal slices of maximum variance of the input map

**Results:**

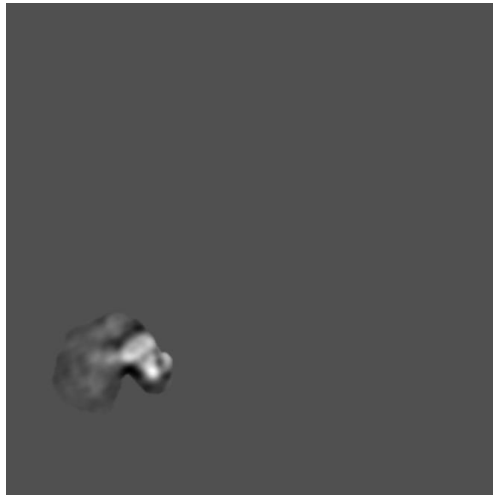
See Fig. 2.



(a) X Slice 195



(b) Y Slice 183



(c) Z Slice 404

Figure 2: Slices of maximum variation in the three dimensions

### Orthogonal projections of the input map

#### **Explanation:**

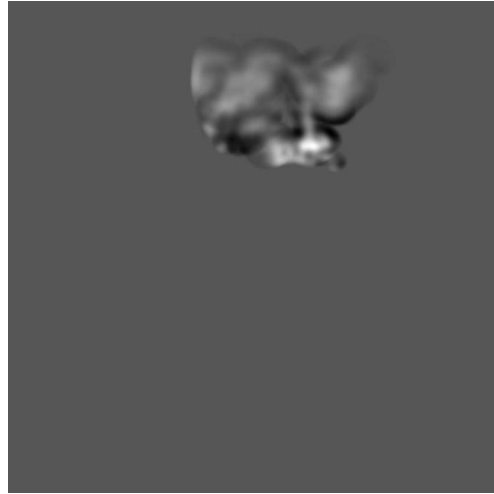
In the projections there should not be stripes (this is an indication of directional overweighting, or angular attraction), and there should not be a dark halo around or inside the structure (this is an indication of incorrect CTF correction or the reconstruction of a biased map).

#### **Results:**

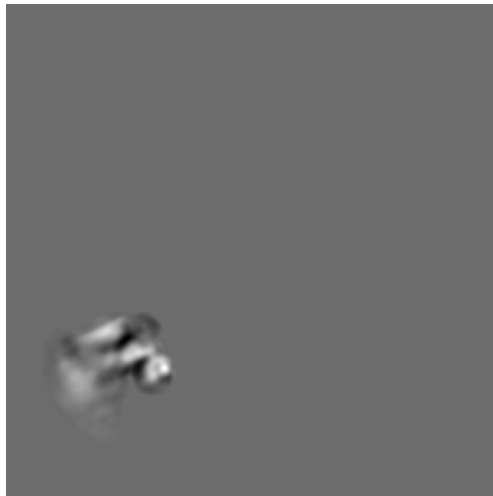
See Fig. 3.



(a) X Projection



(b) Y Projection



(c) Z Projection

Figure 3: Projections in the three dimensions

### Isosurface views of the input map

#### **Explanation:**

An isosurface is the surface of all points that have the same gray value. In these views there should not be many artifacts or noise blobs around the map.

**Results:**  
See Fig. 4.

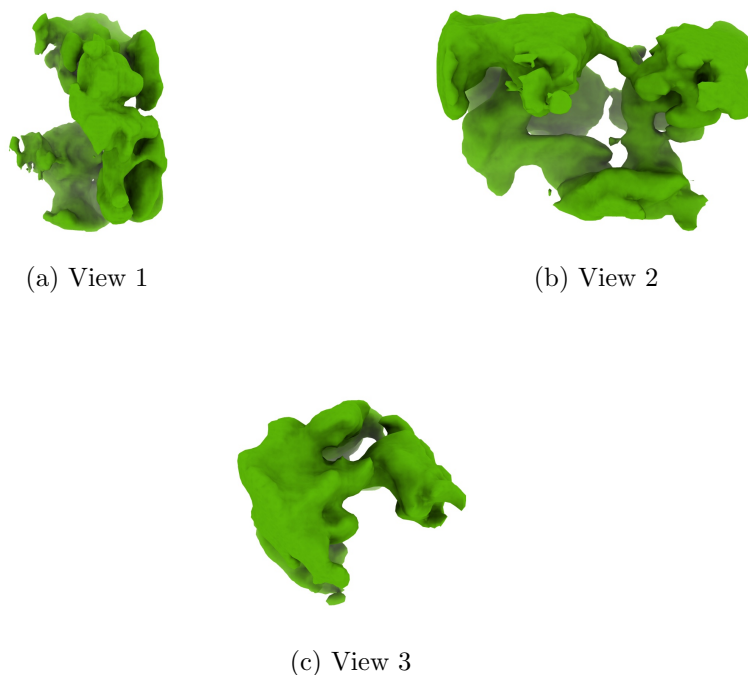


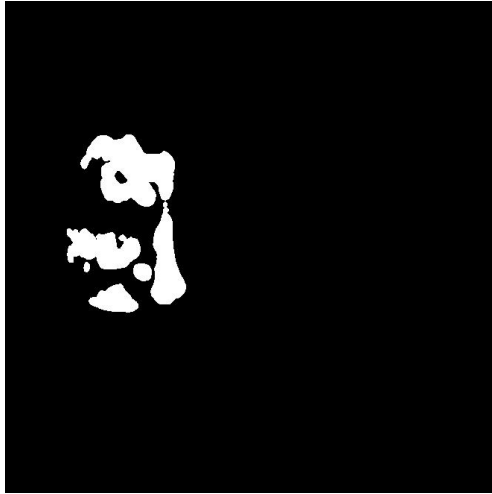
Figure 4: Isosurface at threshold=0.001290. Views generated by ChimeraX at a the following X, Y, Z angles: View 1 (0, -90, -90), View 2 (-90, 0, -90), View 3 (0, 0, 0).

**Orthogonal slices of maximum variance of the mask with hard borders**

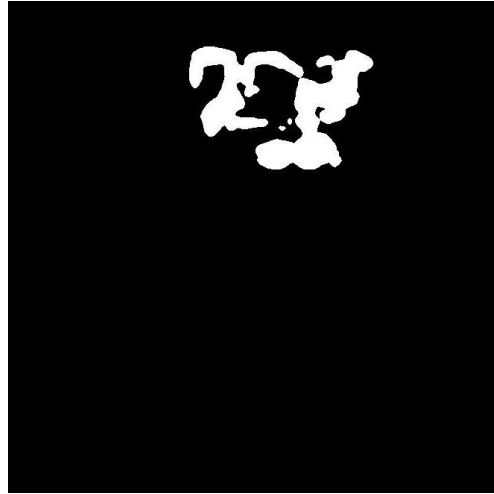
**Explanation:**

The mask with hard borders has been calculated at the suggested threshold 0.001290, the largest connected component was selected, and then dilated by 2Å.

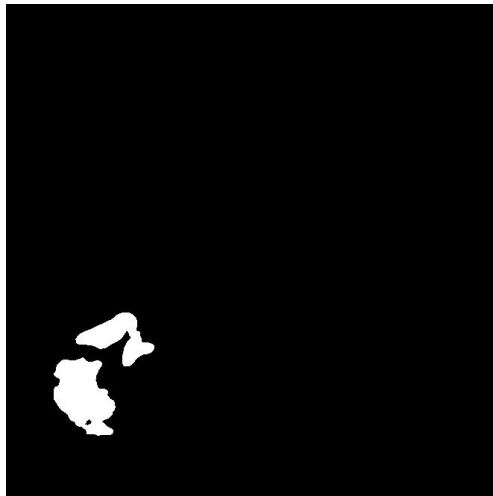
**Results:**  
See Fig. 5.



(a) X Slice 117



(b) Y Slice 179



(c) Z Slice 324

Figure 5: Slices of maximum variation in the three dimensions of the mask with hard borders

**Orthogonal slices of maximum variance of the mask with soft borders**

**Explanation:**

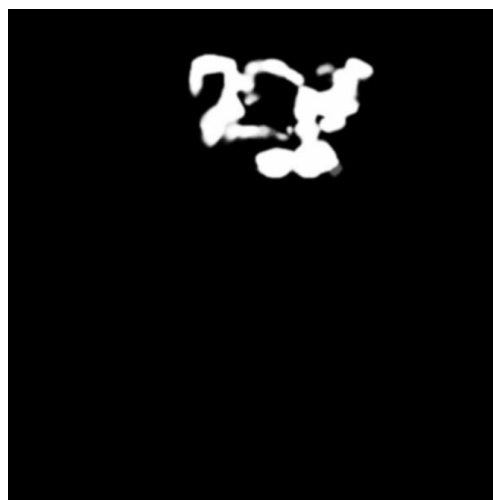
The mask with soft borders has been calculated at the suggested threshold 0.001290, the largest connected component was selected, and then dilated by

2Å.

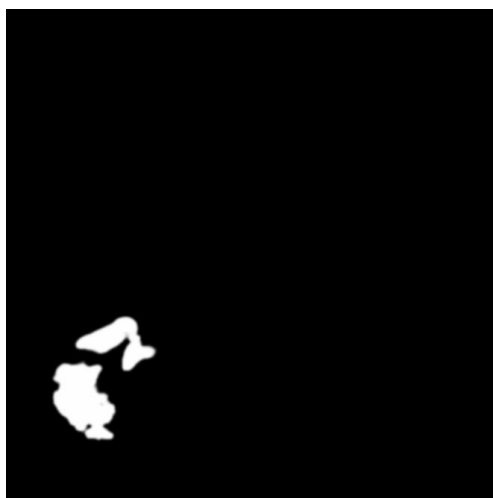
**Results:**  
See Fig. 6.



(a) X Slice 118



(b) Y Slice 180



(c) Z Slice 325

Figure 6: Slices of maximum variation in the three dimensions of the mask with soft borders

## 2 Level 0 analysis

### 2.1 Level 0.a Mass analysis

#### **Explanation:**

The reconstructed map must be relatively well centered in the box, and there should be at least  $30\text{\AA}$  (the exact size depends on the CTF) on each side to make sure that the CTF can be appropriately corrected.

#### **Results:**

The space from the left and right in X are  $78.47$  and  $570.57\text{\AA}$ , respectively. There is a decentering ratio  $(\text{abs}(\text{Right-Left})/\text{Size})\%$  of  $56.06\%$

The space from the left and right in Y are  $98.42$  and  $550.62\text{\AA}$ , respectively. There is a decentering ratio  $(\text{abs}(\text{Right-Left})/\text{Size})\%$  of  $51.52\%$

The space from the left and right in Z are  $321.86$  and  $227.43\text{\AA}$ , respectively. There is a decentering ratio  $(\text{abs}(\text{Right-Left})/\text{Size})\%$  of  $10.76\%$

The center of mass is at  $(x,y,z)=(134.61,171.10,355.94)$ . The decentering of the center of mass  $(\text{abs}(\text{Center})/\text{Size})\%$  is 29.60, 24.08, and 3.93, respectively.

**Automatic criteria:** The validation is OK if 1) the decentering and center of mass less than 20% of the map dimensions in all directions, and 2) the extra space on each direction is more than 20% of the map dimensions. For local reconstruction, focused refinement, or similar, warnings are expected.

**WARNINGS:** 4 warnings

1. **The volume might be significantly decentered in X.**
2. **The volume might be significantly decentered in Y.**
3. **The center of mass in X may be significantly shifted. This is common when the refinement is applied exclusively to one protein region.**
4. **The center of mass in Y may be significantly shifted. This is common when the refinement is applied exclusively to one protein region.**

## 2.2 Level 0.b Mask analysis

### **Explanation:**

The map at the suggested threshold should have most of its mass concentrated in a single connected component. It is normal that after thresholding there are a few thousands of very small, disconnected noise blobs. However, their total mass should not exceed 10%. The raw mask (just thresholding) and the mask constructed for the analysis (thresholding + largest connected component + dilation) should significantly overlap. Overlap is defined by the overlapping coefficient  $(\text{size}(\text{Raw AND Constructed})/\text{size}(\text{Raw}))$  that is a number between 0 and 1, the closer to 1, the more they agree.

### **Results:**

Raw mask: At threshold 0.001290, there are 8 connected components with a total number of voxels of 1125258 and a volume of  $2647323.61 \text{ \AA}^3$  (see Fig.

7). The size and percentage of the total number of voxels for the raw mask are listed below (up to 95% of the mass or the first 100 clusters, whatever happens first), the list contains (No. voxels (volume in  $\text{\AA}^3$ ), percentage, cumulated percentage):

(1124875 (2646422.55), 99.97, 99.97)

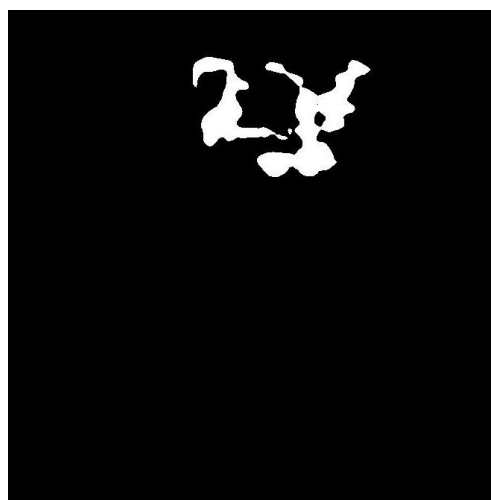
Number of components to reach 95% of the mass: 1

The average size of the remaining 7 components is 54.71 voxels (  $2.35 \text{\AA}^3$ ). Their size go from 1124875 voxels (  $2646422.55 \text{\AA}^3$ ) to 1 voxels (  $2.35 \text{\AA}^3$ ).

The slices of the raw mask can be seen in Fig. 7.



(a) X Slice 103



(b) Y Slice 183



(c) Z Slice 326

Figure 7: Maximum variance slices in the three dimensions of the raw mask

The following table shows the variation of the mass enclosed at different thresholds (see Fig. 8):

| Threshold | Voxel mass | Molecular mass(kDa) | # Aminoacids |
|-----------|------------|---------------------|--------------|
| 0.0011    | 1213680.00 | 2365.66             | 21505.98     |
| 0.0021    | 826831.00  | 1611.63             | 14651.15     |
| 0.0032    | 573629.00  | 1118.10             | 10164.50     |
| 0.0043    | 395501.00  | 770.90              | 7008.14      |
| 0.0054    | 282493.00  | 550.62              | 5005.68      |
| 0.0064    | 207617.00  | 404.68              | 3678.90      |
| 0.0075    | 154086.00  | 300.34              | 2730.35      |
| 0.0086    | 119357.00  | 232.65              | 2114.96      |
| 0.0097    | 96298.00   | 187.70              | 1706.37      |
| 0.0107    | 77950.00   | 151.94              | 1381.25      |
| 0.0118    | 62551.00   | 121.92              | 1108.38      |
| 0.0129    | 49823.00   | 97.11               | 882.85       |
| 0.0140    | 39366.00   | 76.73               | 697.55       |
| 0.0150    | 30120.00   | 58.71               | 533.72       |
| 0.0161    | 22062.00   | 43.00               | 390.93       |
| 0.0172    | 15229.00   | 29.68               | 269.85       |
| 0.0182    | 9582.00    | 18.68               | 169.79       |
| 0.0193    | 5886.00    | 11.47               | 104.30       |
| 0.0204    | 3464.00    | 6.75                | 61.38        |
| 0.0215    | 2086.00    | 4.07                | 36.96        |
| 0.0225    | 1321.00    | 2.57                | 23.41        |
| 0.0236    | 775.00     | 1.51                | 13.73        |
| 0.0247    | 387.00     | 0.75                | 6.86         |
| 0.0258    | 100.00     | 0.19                | 1.77         |

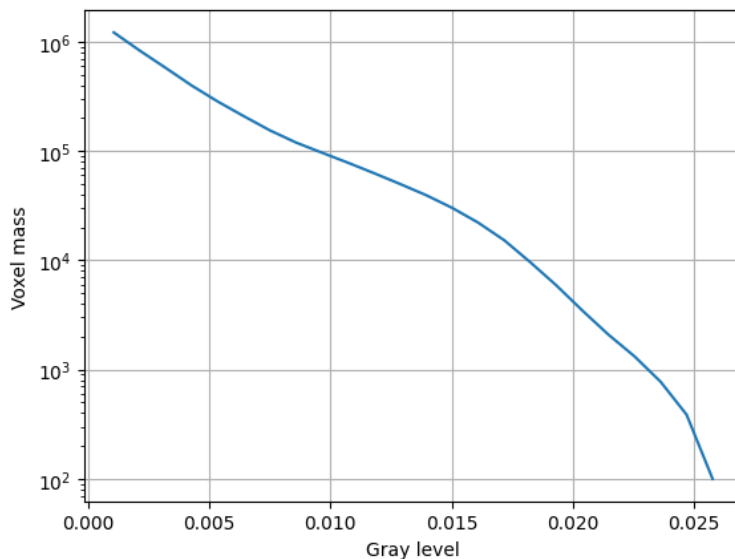


Figure 8: Voxel mass as a function of the gray level.

Constructed mask: After keeping the largest component of the previous mask and dilating it by  $2\text{\AA}$ , there is a total number of voxels of 1546981 and a volume of  $3639484.74 \text{\AA}^3$ . The overlap between the raw and constructed mask is 1.00.

**Automatic criteria:** The validation is OK if 1) to keep 95% of the mass we need to keep at most 5 connected components; and 2) the average volume of the blobs outside the given threshold has a size smaller than  $5\text{\AA}^3$ ; and 3) the overlap between the raw mask and the mask constructed for the analysis is larger than 75%.

**STATUS:** OK

## 2.3 Level 0.c Background analysis

### Explanation:

Background is defined as the region outside the macromolecule mask. The background mean should be zero, and the number of voxels with a very low or very high value (below 5 standard deviations of the noise) should be very

small and they should be randomly distributed without any specific structure. Sometimes, you can see some structure due to the symmetry of the structure.

### Results:

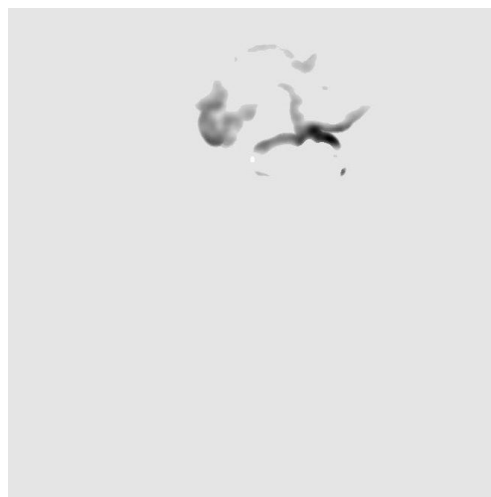
The null hypothesis that the background mean is 0 was tested with a one-sample Student's t-test. The resulting t-statistic and p-value were -830.61 and 0.000000, respectively.

The mean and standard deviation ( $\sigma$ ) of the background were -0.000011 and 0.000225. The percentage of background voxels whose absolute value is larger than 5 times the standard deviation is 0.29 % (see Fig. 9). The same percentage from a Gaussian would be 0.000057% (ratio between the two percentages: 5124.327225).

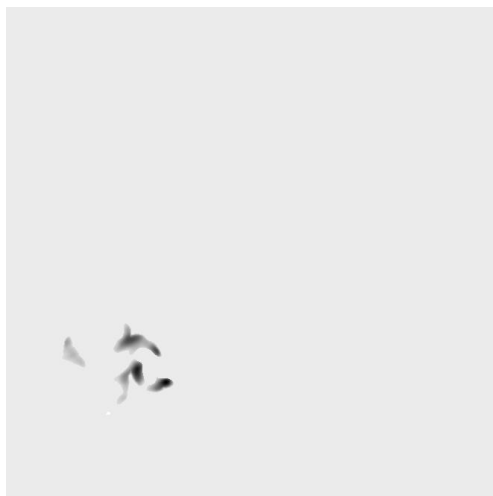
Slices of the background beyond  $5\sigma$  can be seen in Fig. 9.



(a) X Slice 177



(b) Y Slice 169



(c) Z Slice 431

Figure 9: Maximum variance slices in the three dimensions of the parts of the background beyond 5\*sigma

**Automatic criteria:** The validation is OK if 1) the p-value of the null hypothesis that the background has 0 mean is larger than 0.001; and 2) the number of voxels above or below 5 sigma is smaller than 20 times the amount expected for a Gaussian with the same standard deviation whose mean is 0.

**WARNINGS:** 2 warnings

1. **The null hypothesis that the background mean is 0 has been rejected because the p-value of the comparison is smaller than 0.001**
2. **There is a significant proportion of outlier values in the background (cdf5 ratio=5124.33)**

## 2.4 Level 0.d B-factor analysis

**Explanation:**

The B-factor line (see this [link](#) for more details) fitted between 15Å and the resolution reported should have a slope that is between 0 and 300 Å<sup>2</sup>.

**Results:**

This method cannot be applied to maps with a resolution worse than 8Å.

**STATUS:** Does not apply

## 2.5 Level 0.e Local resolution with DeepRes

### **Explanation:**

DeepRes (see this [link](#) for more details) measures the local resolution using a neural network that has been trained on the appearance of atomic structures at different resolutions. Then, by comparing the local appearance of the input map to the appearance of the atomic structures a local resolution label can be assigned.

### **Results:**

This method cannot be applied to maps with a resolution worse than 13Å.

**STATUS:** Does not apply

## 2.6 Level 0.f Local B-factor

### **Explanation:**

LocBfactor (see this [link](#) for more details) estimates a local resolution B-factor by decomposing the input map into a local magnitude and phase term using the spiral transform.

### **Results:**

Fig. 10 shows the histogram of the local B-factor according to LocBfactor. Some representative percentiles are:

| Percentile | Local B-factor ( $\text{\AA}^{-2}$ ) |
|------------|--------------------------------------|
| 2.5%       | -7598.75                             |
| 25%        | -4473.94                             |
| 50%        | -3256.60                             |
| 75%        | -2031.02                             |
| 97.5%      | 1089.83                              |

Fig. 11 shows some representative views of the local B-factor.

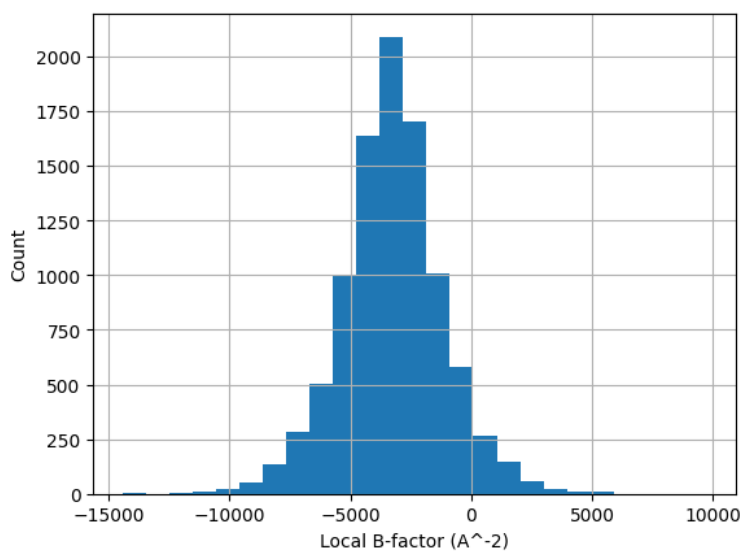
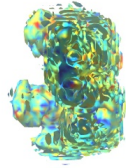
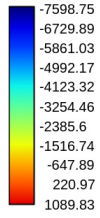
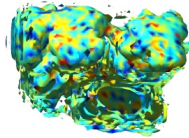
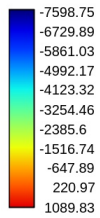


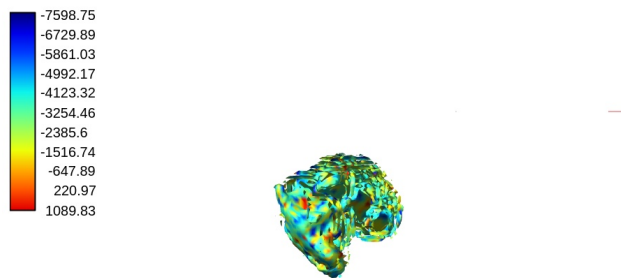
Figure 10: Histogram of the local B-factor according to LocBfactor.



(a) View 1



(b) View 2



(c) View 3

Figure 11: Local B-factor according to LocBfactor. Views generated by ChimeraX at a the following X, Y, Z angles: View 1 (0, -90, -90), View 2 (-90, 0, -90), View 3 (0, 0, 0).

**Automatic criteria:** The validation is OK if the median B-factor is in the range [-300,0].

**WARNINGS:** 1 warnings

1. **The median B-factor is out of the interval [-300,0]**

## 2.7 Level 0.g Local Occupancy

### Explanation:

LocOccupancy (see this [link](#) for more details) estimates the occupancy of a voxel by the macromolecule.

### Results:

Fig. 12 shows the histogram of the local occupancy according to LocOccupancy. Some representative percentiles are:

| Percentile | Local Occupancy [0-1] |
|------------|-----------------------|
| 2.5%       | 0.00                  |
| 25%        | 1.00                  |
| 50%        | 1.00                  |
| 75%        | 1.00                  |
| 97.5%      | 1.00                  |

Fig. 13 shows some representative views of the local occupancy.

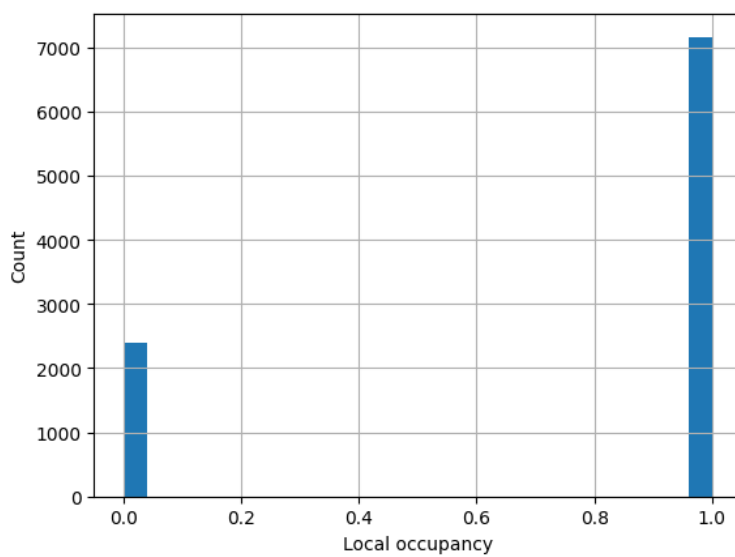
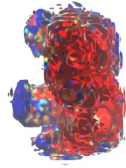
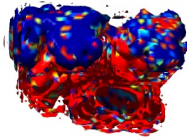


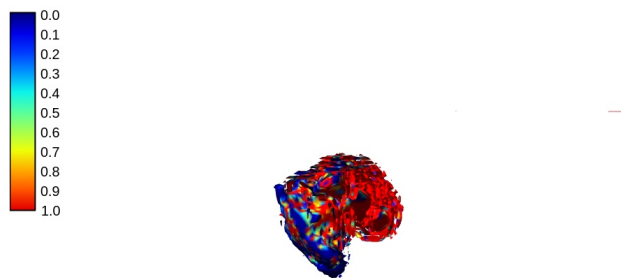
Figure 12: Histogram of the local occupancy according to LocOccupancy.



(a) View 1



(b) View 2



(c) View 3

Figure 13: Local occupancy according to LocOccupancy. Views generated by ChimeraX at the following X, Y, Z angles: View 1 (0, -90, -90), View 2 (-90, 0, -90), View 3 (0, 0, 0).

**Automatic criteria:** The validation is OK if the median occupancy is larger than 50%.

**STATUS:** OK

## 2.8 Level 0.h Hand correction

### Explanation:

Deep Hand (see this [link](#) for more details) determines the correction of the hand for those maps with a resolution smaller than 5Å. The method calculates a value between 0 (correct hand) and 1 (incorrect hand) using a neural network to assign its hand.

### Results:

This method cannot be applied to maps with a resolution worse than 5Å.

**STATUS:** Does not apply

### 3 Half maps

Half map 1: emd\_72439\_half\_map\_1.map

SHA256 hash: 66fdd554cd578ee538b9e743f105897a550621f34ad7993b5eb2847b86fb950d

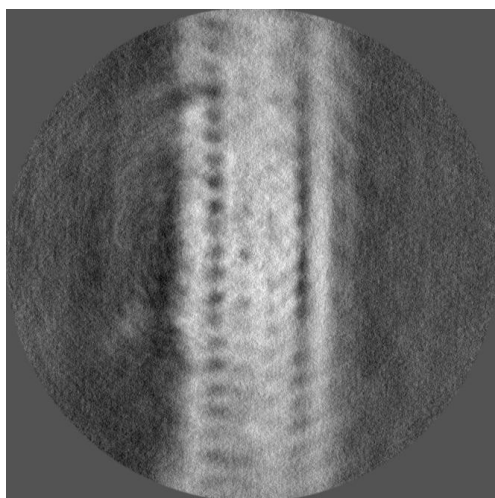
Half map 2: emd\_72439\_half\_map\_2.map

SHA256 hash: 6c4b75590713763b21cccc3a1622ede020788cd2d8e4c6a8f3d1e4fa66df52cc

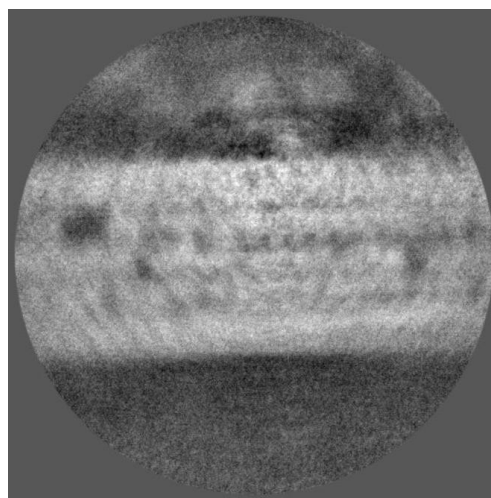
Slices of the first half map can be seen in Fig. 14.

Slices of the second half map can be seen in Fig. 15.

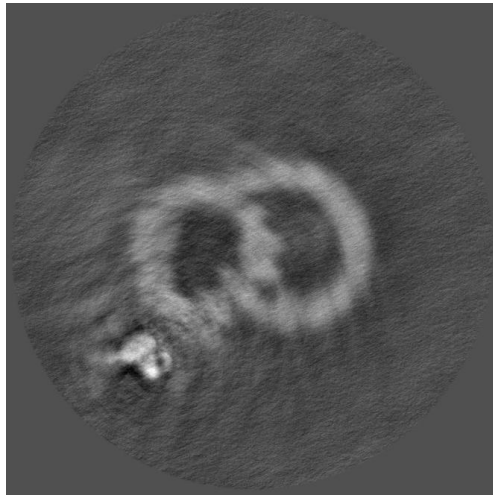
Slices of the difference between both maps can be seen in Fig. 16. There should not be any structure in this difference. Sometimes some patterns are seen if the map is symmetric.



(a) X Slice 333

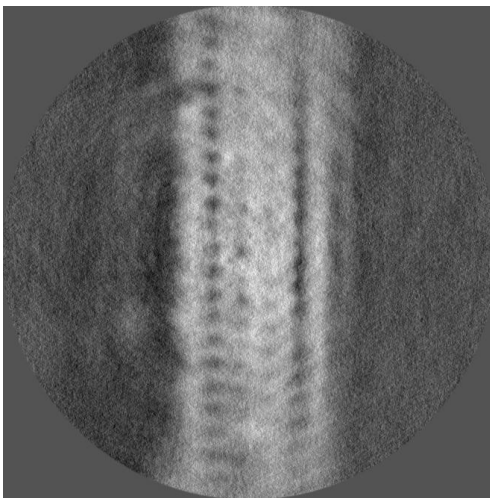


(b) Y Slice 248

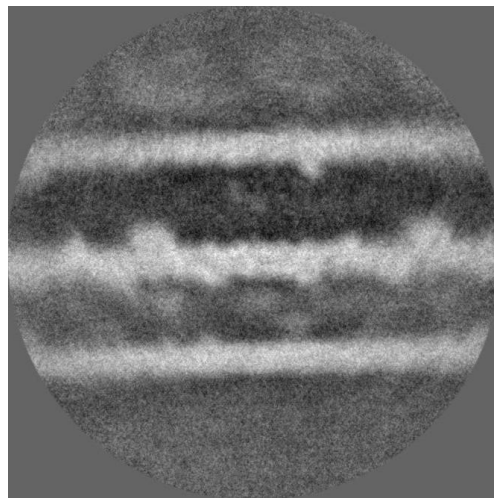


(c) Z Slice 404

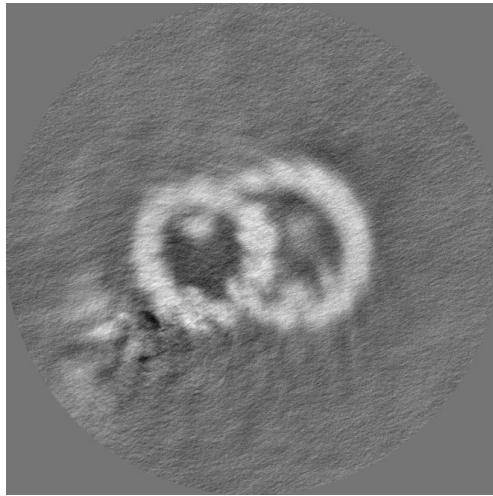
Figure 14: Slices of maximum variation in the three dimensions of Half 1



(a) X Slice 332

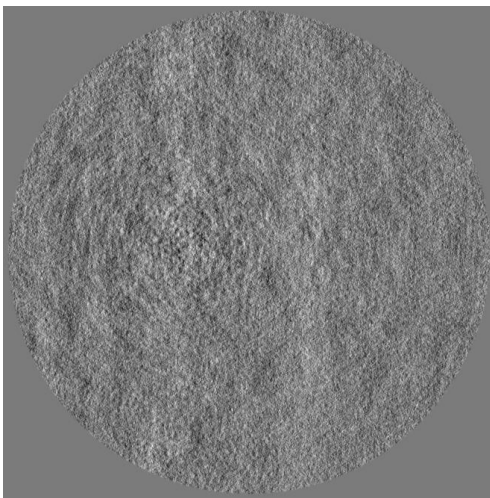


(b) Y Slice 335

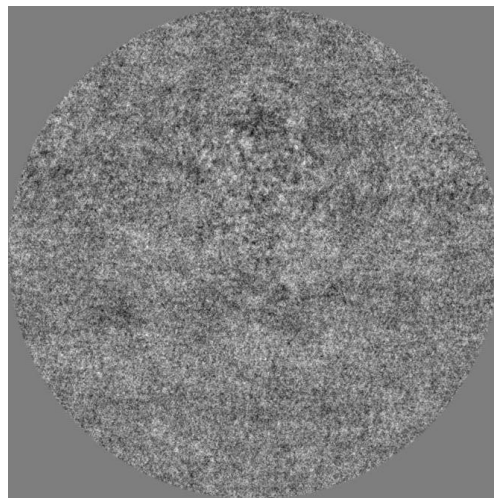


(c) Z Slice 322

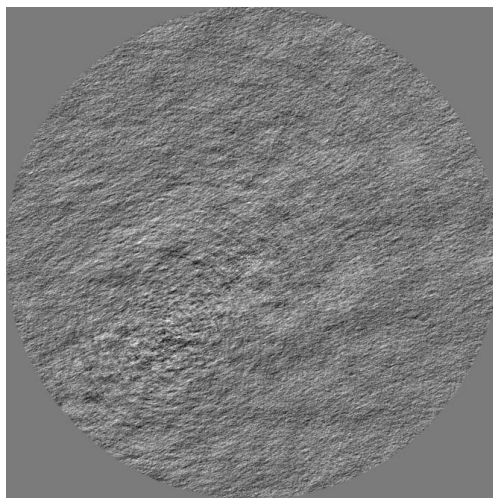
Figure 15: Slices of maximum variation in the three dimensions of Half 2



(a) X Slice 258



(b) Y Slice 299



(c) Z Slice 342

Figure 16: Slices of maximum variation in the three dimensions of the difference Half1-Half2.

## 4 Level 1 analysis

### 4.1 Level 1.a Global resolution

**Explanation:** The Fourier Shell Correlation (FSC) between the two half maps is the most standard method to determine the global resolution of a map. However, other measures exist such as the Spectral Signal-to-Noise Ratio and the Differential Phase Residual. There is a long debate about the right thresholds for these measures. Probably, the most clear threshold is the one of the SSNR (SSNR=1). For the DPR we have chosen  $103.9^\circ$  and for the FSC, the standard 0.143. For a deep discussion of all these thresholds, see this [link](#). Note that these thresholds typically result in resolution values that are at the lower extreme of the local resolution range, meaning that this resolution is normally in the first quarter. It should not be understood as the average resolution of the map.

Except for the noise, the FSC and DPR should be approximately monotonic. They should not have any “coming back” behavior. If they have, this is typically due to the presence of a mask in real space or non-linear process-

ing.

**Results:**

Fig. 17 shows the FSC and the 0.143 threshold. The resolution according to the FSC is 14.30Å. The map information is well preserved (FSC>0.9) up to 36.13Å.

Fig. 18 shows the DPR and the 103.9° threshold. The resolution according to the DPR is 6.57Å.

Fig. 19 shows the SSNR and the SSNR=1 threshold. The resolution according to the SSNR is 14.80Å.

The mean resolution between the three methods is 11.89Å and its range is within the interval [ 6.57,14.80]Å.

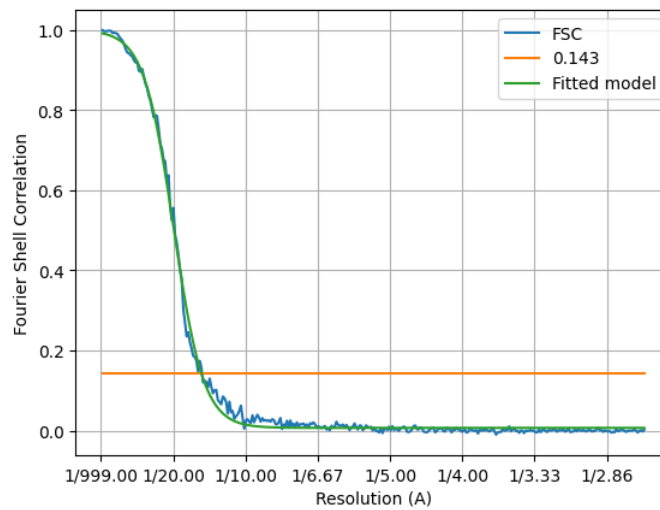


Figure 17: Fourier Shell correlation between the two halves.

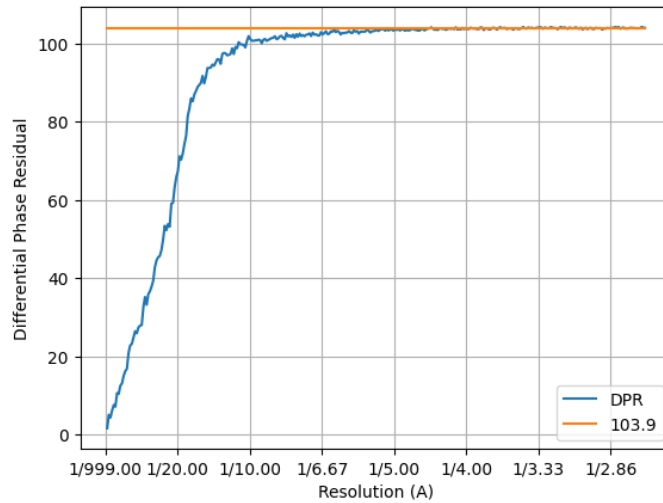


Figure 18: Differential Phase Residual between the two halves.

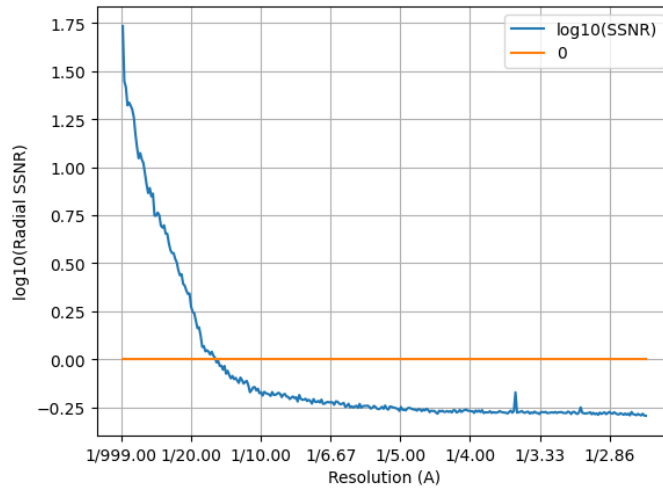


Figure 19: Spectral Signal-to-Noise Ratio estimated from the two halves.

**Automatic criteria:** The validation is OK if the user provided resolution is larger than 0.8 times the resolution estimated by 1) FSC, 2) DPR, and 3) SSNR.

STATUS: OK

## 4.2 Level 1.b FSC permutation

### Explanation:

This method (see this [link](#) for more details) calculates a global resolution by formulating a hypothesis test in which the distribution of the FSC of noise is calculated from the two maps.

### Results:

The resolution at 1% of FDR was 10.8. Fig. 20 shows the estimated FSC and resolution.

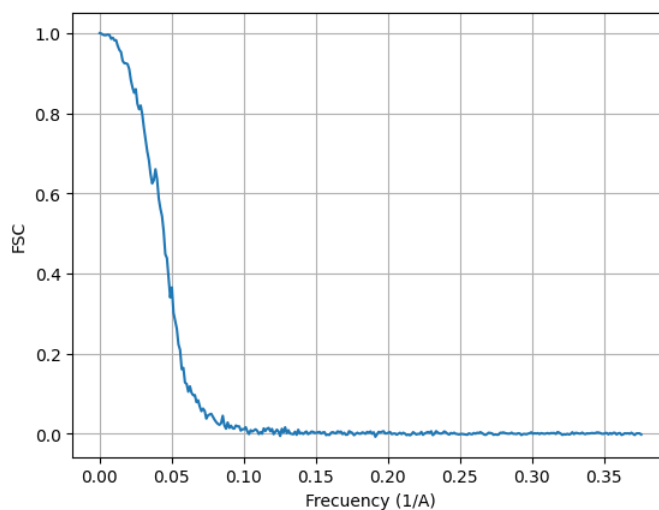


Figure 20: FSC and resolution estimated by a permutation test.

**Automatic criteria:** The validation is OK if the user provided resolution is larger than 0.8 times the resolution estimated by FSC permutation.

STATUS: OK

### 4.3 Level 1.c Local resolution with Blocres

#### Explanation:

This method (see this [link](#) for more details) computes a local Fourier Shell Correlation (FSC) between the two half maps.

#### Results:

Fig. 21 shows the histogram of the local resolution according to Blocres. Some representative percentiles are:

| Percentile | Resolution(Å) |
|------------|---------------|
| 2.5%       | 7.31          |
| 25%        | 9.66          |
| 50%        | 10.91         |
| 75%        | 12.24         |
| 97.5%      | 18.00         |

The reported resolution, 17.00 Å, is at the percentile 96.8. Fig. 22 shows some representative views of the local resolution.

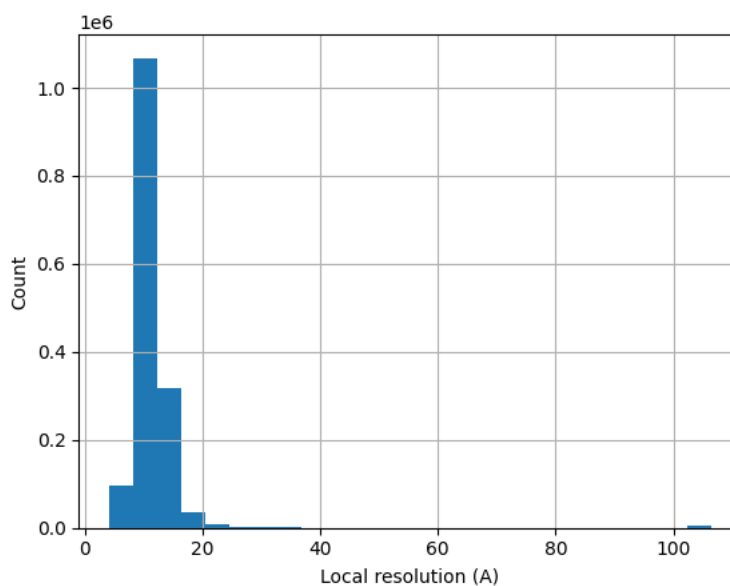
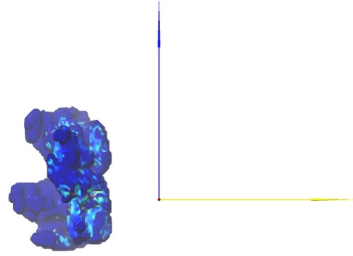
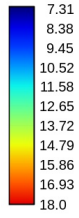
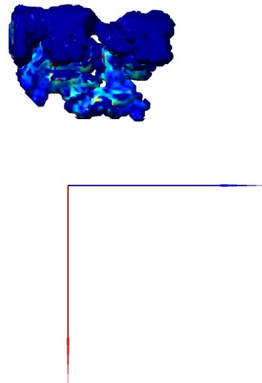
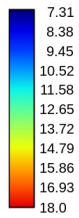


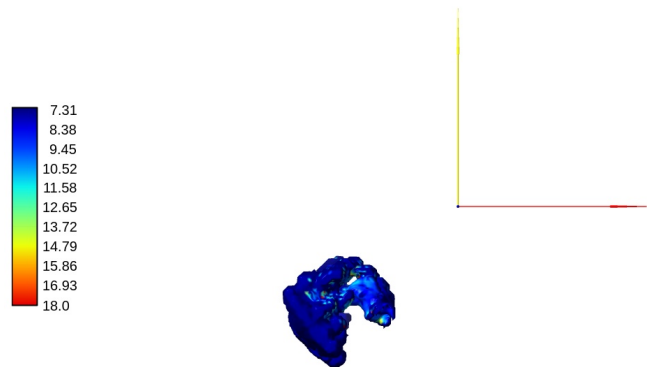
Figure 21: Histogram of the local resolution according to blocres.



(a) View 1



(b) View 2



(c) View 3

Figure 22: Local resolution according to Blocres. Views generated by ChimeraX at a the following X, Y, Z angles: View 1 (0, -90, -90), View 2 (-90, 0, -90), View 3 (0, 0, 0).

**Automatic criteria:** The validation is OK if the percentile of the user provided resolution is larger than 0.1% of the percentile of the local resolution as estimated by BlocRes.

**STATUS:** OK

#### 4.4 Level 1.d Local resolution with Resmap

**Explanation:**

This method (see this [link](#) for more details) is based on a test hypothesis testing of the superiority of signal over noise at different frequencies.

**Results:**

Fig. 23 shows the histogram of the local resolution according to Resmap. Some representative percentiles are:

| Percentile | Resolution(Å) |
|------------|---------------|
| 2.5%       | 5.74          |
| 25%        | 5.87          |
| 50%        | 5.88          |
| 75%        | 5.88          |
| 97.5%      | 5.89          |

The reported resolution, 17.00 Å, is at the percentile 100. Fig. 24 shows some representative views of the local resolution.

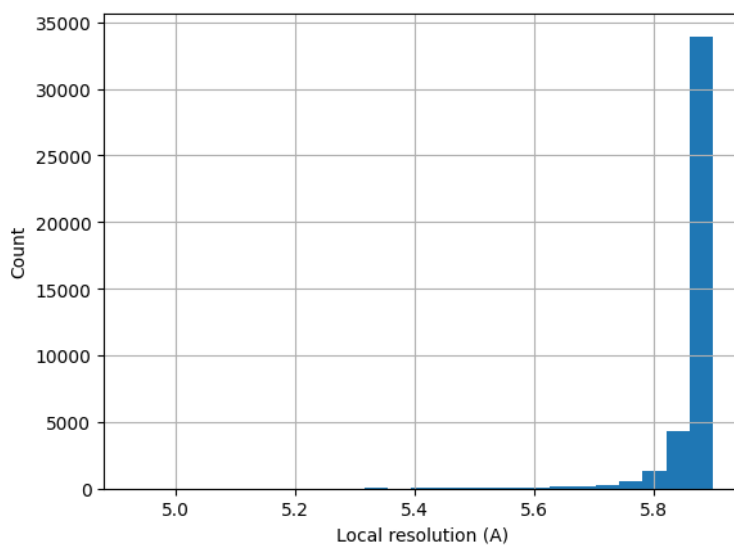
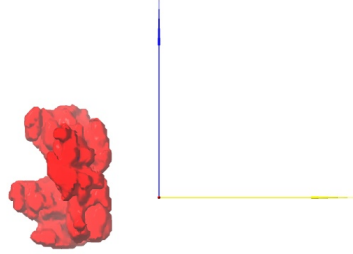
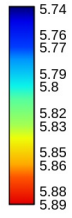
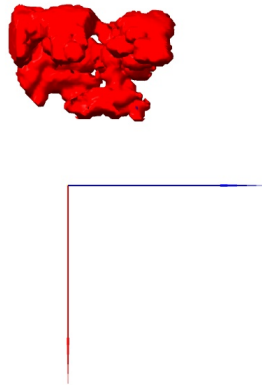
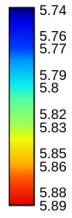


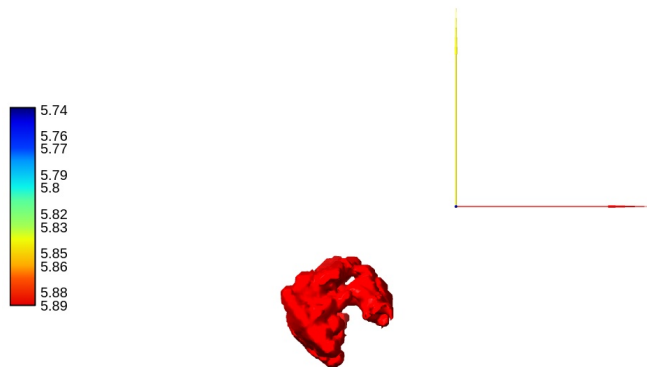
Figure 23: Histogram of the local resolution according to Resmap.



(a) View 1



(b) View 2



(c) View 3

Figure 24: Local resolution according to Resmap. Views generated by ChimeraX at the following X, Y, Z angles: View 1 (0, -90, -90), View 2 (-90, 0, -90), View 3 (0, 0, 0).

**Automatic criteria:** The validation is OK if the percentile of the user provided resolution is larger than 0.1% of the percentile of the local resolution as estimated by Resmap.

**STATUS:** OK

## 4.5 Level 1.e Local resolution with MonoRes

### Explanation:

MonoRes (see this [link](#) for more details) evaluates the local energy of a point with respect to the distribution of energy in the noise. This comparison is performed at multiple frequencies and for each one, the monogenic transformation separates the amplitude and phase of the input map. Then the energy of the amplitude within the map is compared to the amplitude distribution observed in the noise, and a hypothesis test is run for every voxel to check if its energy is significantly above the level of noise.

### Results:

Fig. 25 shows the histogram of the local resolution according to MonoRes. Some representative percentiles are:

| Percentile | Resolution( $\text{\AA}$ ) |
|------------|----------------------------|
| 2.5%       | 8.88                       |
| 25%        | 21.85                      |
| 50%        | 33.17                      |
| 75%        | 45.99                      |
| 97.5%      | 78.92                      |

The reported resolution, 17.00  $\text{\AA}$ , is at the percentile 14.3. Fig. 26 shows some representative views of the local resolution

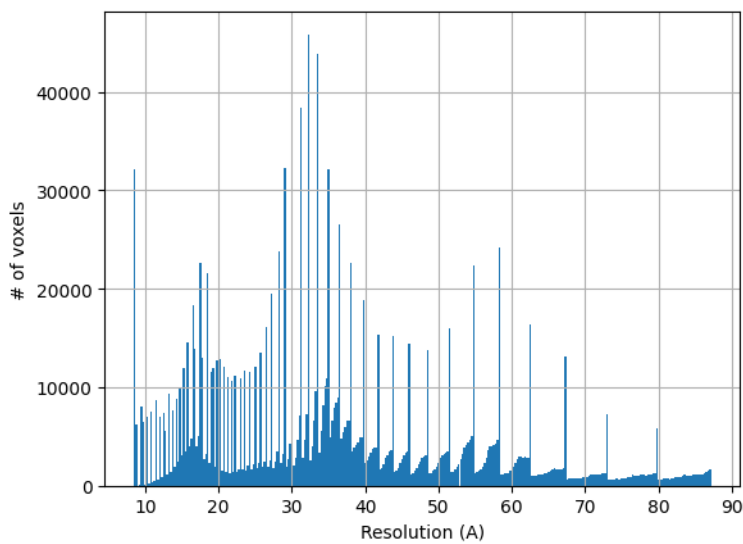
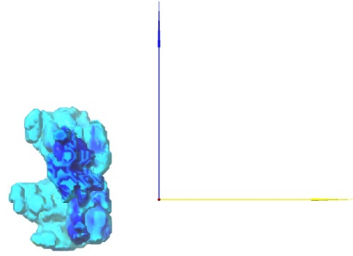
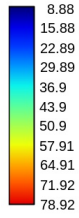
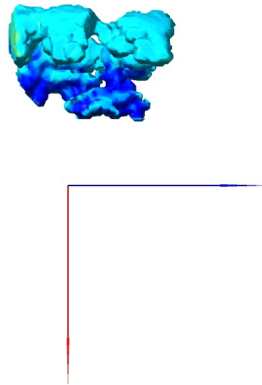
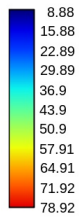


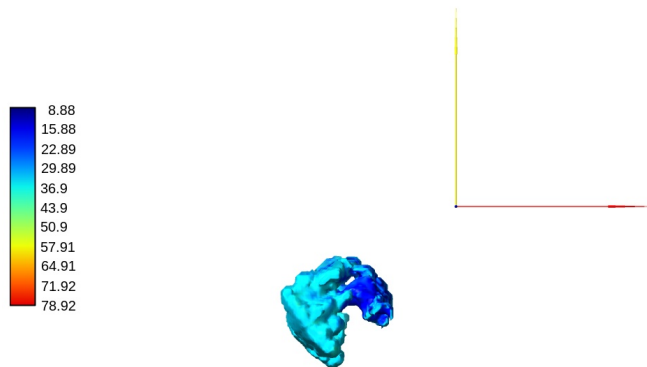
Figure 25: Histogram of the local resolution according to MonoRes.



(a) View 1



(b) View 2



(c) View 3

Figure 26: Local resolution according to Monores. Views generated by ChimeraX at a the following X, Y, Z angles: View 1 (0, -90, -90), View 2 (-90, 0, -90), View 3 (0, 0, 0).

**Automatic criteria:** The validation is OK if the percentile of the user provided resolution is larger than 0.1% of the percentile of the local resolution as estimated by MonoRes.

**STATUS:** OK

## 4.6 Level 1.f Local and directional resolution with MonoDir

### Explanation:

MonoDir (see this [link](#) for more details) extends the concept of local resolution to local and directional resolution by changing the shape of the filter applied to the input map. The directional analysis can reveal image alignment problems.

The histogram of best resolution voxels per direction (Directional Histogram 1D) shows how many voxels in the volume have their maximum resolution in that direction. Directions are arbitrarily numbered from 1 to N. This histogram should be relatively flat. We perform a Kolmogorov-Smirnov test to check its uniformity. If the null hypothesis is rejected, then the di-

rectional resolution is not uniform. It does not mean that it is wrong, and it could be caused by several reasons: 1) the angular distribution is not uniform, 2) there are missing directions, 3) there is some anisotropy in the data (including some preferential directional movement).

Ideally, the radial average of the minimum, maximum, and average resolution at each voxel (note that these are spatial radial averages) should be flat and as low as possible. If they show some slope, this is associated with inaccuracies in the angular assignment. These averages make sense when the shells are fully contained within the protein. As the shells approach the outside of the protein, these radial averages make less sense.

**Results:**

This method cannot be applied to maps with a resolution worse than 10Å.

**STATUS:** Does not apply

## 4.7 Level 1.g Fourier Shell Occupancy

**Explanation:**

This method (see this [link](#) for more details) calculates the anisotropy of the energy distribution in Fourier shells. This is an indirect measure of anisotropy of the angular distribution or the presence of heterogeneity. A natural threshold for this measure is 0.5. However, 0.9 and 0.1 are also interesting values that define the frequency at which the occupancy is 90% and 10%, respectively. This region is shaded in the plot.

**Results:**

Fig. 27 shows the Fourier Shell Occupancy and its anisotropy. The directional resolution is shown in Fig. 28. The resolution according to the FSO is 8.99Å. Fourier shells are occupied at between 90 and than 10% in the range [14.21, 6.50]Å.

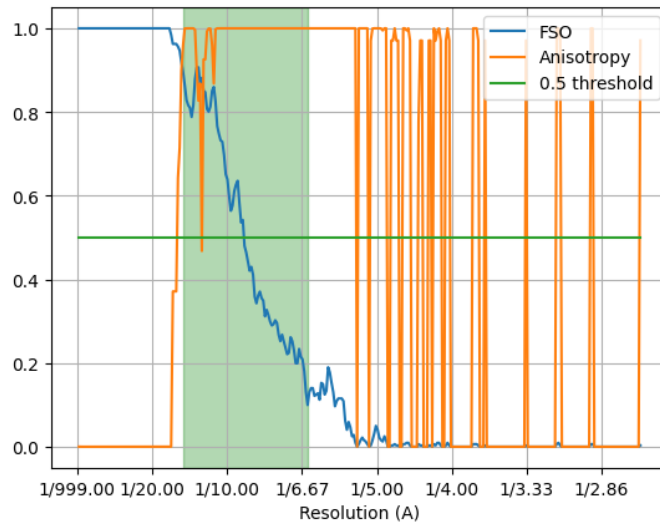


Figure 27: FSO and anisotropy.

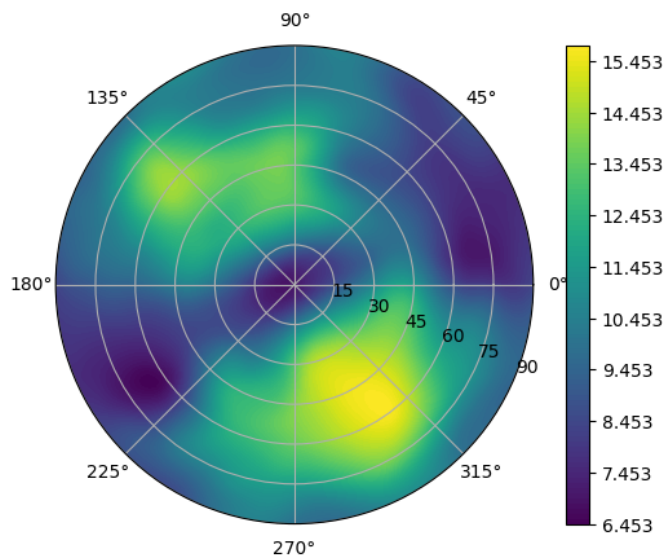


Figure 28: Directional resolution in the projection sphere.

**Automatic criteria:** The validation is OK if the resolution provided by the user is not smaller than 0.8 times the resolution estimated by the first

cross of FSO below 0.5.

**STATUS:** [OK](#)

## 4.8 Level 1.h Fourier Shell Correlation 3D

### **Explanation:**

This method (see this [link](#) for more details) analyzes the FSC in different directions and evaluates its homogeneity.

### **Results:**

**ERROR: The protocol failed.**

**STATUS:** [Could not be measured](#)